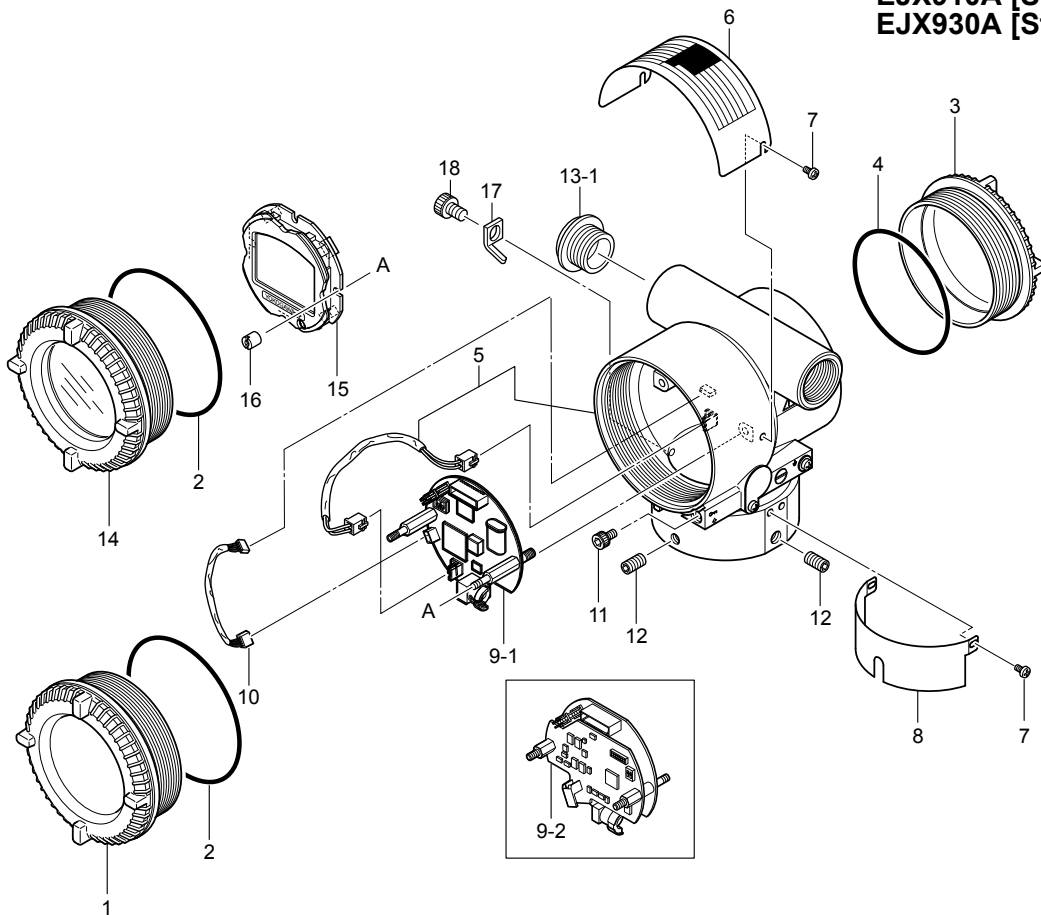


Customer Maintenance Parts List

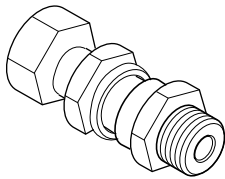
EJX910A and EJX930A Multivariable Transmitters (Transmitter Section)

DPharp **EJX**™

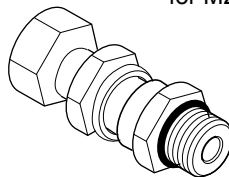
EJX910A [Style: S2]
EJX930A [Style: S1]



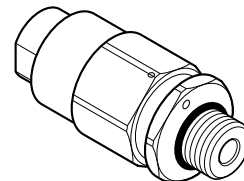
13-2
Cable gland for 1/2NPT



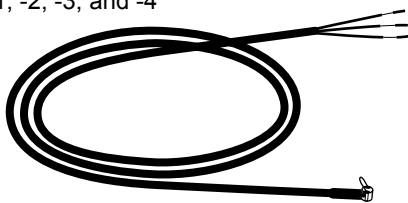
13-3
Cable gland assembly
for M20



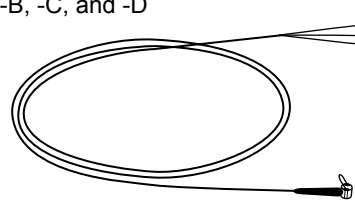
13-4
Cable gland for G 1/2



19-1 RTD Cable assembly
for External temperature input code
-1, -2, -3, and -4



19-2 RTD Cable assembly
for External temperature input code
-B, -C, and -D



Item	Part No.	Qty	Description
1	Below F9913TJ F9913VP F9913SC F9913SD	1	Cover (Note 1) Cast-aluminum alloy Cast-aluminum alloy (Option code /PR) ASTM CF-8M ASTM CF-8M (Option code /PR)
2	Below F9341JP F9900GS	1	O-ring Buna-N Fluoro-rubber (Option code /HE)
3	Below F9913TA F9913VF F9913SA F9913SB	1	Cover (Note 1) Cast-aluminum alloy Cast-aluminum alloy (Option code /PR) ASTM CF-8M ASTM CF-8M (Option code /PR)
4	Below F9910LE F9900GR	1	O-ring Buna-N Fluoro-rubber (Option code /HE)
5	—	1	Case Assembly for amplifier housing code 1 (see Table 1 and Table 2) (Note 1) (Note 2) (Note 5)
6	—	1	Name Plate
7	Below F9900RG F9900RR	4	Screw For cast-aluminum alloy case assembly, 316 SST For ASTM CF-8M case assembly, 316 SST
8	F9900RE	1	Tag Plate, 316 SST
9-1	Below F9922MB F9922NB	1	CPU Assembly for HART 5 protocol version (Note 2) (Note 3) (Note 4) For measurement function code A For measurement function code B
9-2	Below F9921DN F9921EN F9921DP F9921EP F9921DQ F9921EQ F9921DR F9921ER	1	CPU Assembly for FOUNDATION Fieldbus protocol version (Note 2) (Note 4) For measurement function code A For measurement function code B With PID function (measurement function code A, Option code /LC1) With PID function (measurement function code B, Option code /LC1) With software download function (measurement function code A, Option code /EE) With software download function (measurement function code B, Option code /EE) With software download and PID function (measurement function code A, Option code /EE and /LC1) With software download and PID function (measurement function code B, Option code /EE and /LC1)
10	Below F9922PC F9921PD		Cable Assembly For HART protocol version For FOUNDATION Fieldbus protocol version
11	F9900RP	2	Bolt for Option code /KF22, /KU22, /SF2, or /JF3
12	Below F9900GC F9900RH	2	Screw SUSXM7 316 SST (for ASTM CF-8M case assembly, or Option code /HC)
13-1	Below F9900GQ F9900GY F9900GP F9900GX G9612EB F9900GL F9900GK F9900GN	1	Plug For G1/2, Cast-aluminum alloy For G1/2, Cast-aluminum alloy (Option code /HE) For M20, Cast-aluminum alloy For M20, Cast-aluminum alloy (Option code /HE) For 1/2 NPT, SUS304 For G1/2, SUS316 For M20, 316 SST For 1/2 NPT, SUS316
13-2	F9912MM	2	Cable gland for 1/2 NPT
13-3	F9912NM	2	Cable gland assembly for M20
13-4	G9601AM	2	Cable gland for G 1/2
14	Below F9913JA F9913JX F9913KA F9913KX F9913JZ F9913JY F9913KZ F9913KY	1	Cover Assembly Cast-aluminum alloy Cast-aluminum alloy (Option code /PR) Cast-aluminum alloy (Option code /HE) Cast-aluminum alloy (Option code /PR and /HE) ASTM CF-8M ASTM CF-8M (Option code /PR) ASTM CF-8M (Option code /HE) ASTM CF-8M (Option code /PR and /HE)
15	F9920LU	1	LCD Board Assembly
16	F9342MK	2	Mounting Screw

} For integral indicator

(Note 1) Not applicable for Option code /X2.

(Note 2) Applicable for general use type. In case of explosionproof type, consult Yokogawa local office.

(Note 3) This CPU assembly is available for HART 5 protocol revision. When HART protocol revision 7 is required, consult Yokogawa local office.

(Note 4) Not applicable for Option code /DG1 or /DG6.

(Note 5) Not applicable for Option code /HC.

(Note 6) Not applicable for the device revision 1.

Item	Part No.	Qty	Description
17	Below F9900GE F9900GD	1	Plate, 316 SST For EJX910A For EJX930A
18	F9900RJ	1	Bolt, 316 or 316(L) SST
19-1	—	1	RTD Cable assembly, for External temperature input code -1, -2, -3, and -4 (see Table 3)
19-2	—	1	RTD Cable assembly, for External temperature input code -B, -C, and -D (see Table 3)

■ Case Assembly Part Number

● For HART protocol version

Table 1. Case Assembly Parts Number (Item 5)

Description	Electrical Connection	Case Assembly Part Number (Item 5)		
		G1/2	1/2NPT.	M20
Without Lightning Protector	—	F9918WA	F9918YA	
With Lightning Protector (Option code /A)	—	F9918WC	F9918YC	

● For FOUNDATION Fieldbus protocol version

Table 2. Case Assembly Parts Number (Item 5)

Description	Electrical Connection	Case Assembly Part Number (Item 5)		
		G1/2	1/2NPT.	M20.
Without Lightning Protector	—	F9918XA	F9918ZA	
With Lightning Protector (Option code /A)	—	F9918XC	F9918ZC	

■ RTD Cable Assembly Part Number

Table 3. RTD Cable Assembly Parts Number (Item 19)

Item No.	Description	0.5m	4m	7.5m	25m
19-1	Shielded Cable for Cable Gland Use for External temperature input code -1, -2, -3, and -4	F9912KN	F9912KP	F9912KQ	F9912KR
19-2	Shielded Cable for Conduit Use for External temperature input code -B, -C, and -D	—	F9912QP	F9912QQ	F9912QR