

Thank you for selecting our "K9350LE NO₂/NO Converter".
The NO₂/NO converter, by using a special catalyst which efficiently converts NO₂ in sample gas to NO, is to be coupled with a NO_x gas analyzer or NH₃ gas analyzer for flue exhaust.

CAUTION

- Do not touch the converter section due to its high temperature. Wear protective gloves while exchanging catalyst.
- In order to protect the system controlled by the product and the product itself and ensure safe operation, observe the safety precautions described in this user's manual. We assume no liability for safety if users fail to observe these instructions when operating the product.
- Be sure to use the spare parts approved by Yokogawa Electric Corporation (hereafter simply referred to as YOKOGAWA) when replacing parts or consumables.
- Modification of the product is strictly prohibited.

Notes on Handling User's Manuals

- Please hand over the user's manuals to your end users so that they can keep the user's manuals on hand for convenient reference.
- Please read the information thoroughly before using the product.
- The purpose of these user's manuals is not to warrant that the product is well suited to any particular purpose but rather to describe the functional details of the product.
- No part of the user's manuals may be transferred or reproduced without prior written consent from YOKOGAWA.
- YOKOGAWA reserves the right to make improvements in the user's manuals and product at any time, without notice or obligation.
- All names of company, brand of product used in this manual are registered trademarks or trademarks of their respective companies.
- TM or ® to signify brand or trademarks are not used in this manual.

Specification

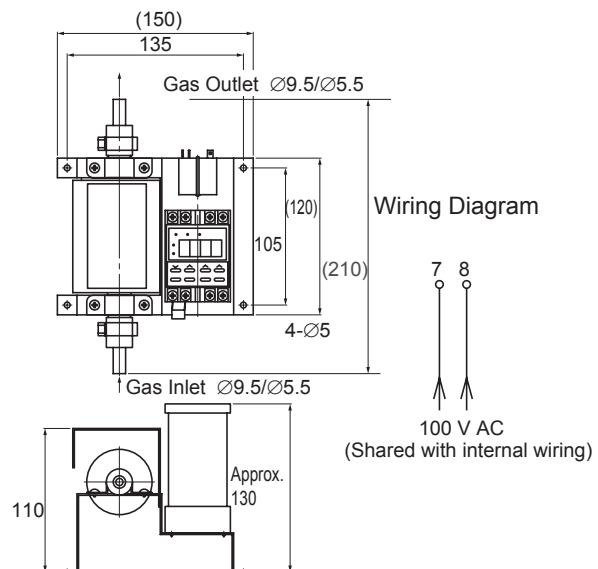
Mounting:	Indoor surface mounting
Target Gases:	General boiler exhaust gas, atmosphere
Catalyst:	Amount; 2 cm ³ Replacement cycle; Approx. 8 months (at flow rate of 0.5 L/min with 5%O ₂ , 10 ppm NO ₂) Temperature set-point; 220 ±10°C (Sensing tip; K thermocouple)
Wetted materials:	Ceramic, glass filter, SUS316
Conversion efficiency:	95% or higher, conforms to JIS
Gas Flow Rate:	0.5 L/min
Gas inlet/outlet:	ø6 mm tube connection
Ambient Temperature:	-5 to 45°C
Power Supply:	100 V AC, 50/60 Hz
Power Consumption:	Approx. 85 W

Weight: Approx. 1.1 kg
Sample gas requirements: Dust/drain removed, gas temperature at 150°C or lower

Spare Parts

Item	Part No.	Note
Catalyst for NO ₂ /NO converter	K9350LP	
Glass wool for NO ₂ /NO converter	K9350LQ	
Fitting for NO ₂ /NO converter	K9350LV	use 2 pcs

External Dimensions



Installation, Piping, Wiring

- The main frame should be installed vertically to the ground. Avoid installing it obliquely or laying it on its side.
- Pipes should be connected so that the bottom port of converter block becomes an inlet and the top port becomes an outlet. (See "External Dimensions.")
- Connect power supply to the terminals indicated in the wiring diagram. (Use type D for grounding.)
- Prepare a breaker or a switchboard.
- Confirm the piping and wiring before turning ON the converter.
- Be careful of the high temperature after turning the power on. The temperature controller is set at 220°C. Since temperature has been factory-set, the temperature controller need not be operated.
- When the temperature reaches ±20°C from the set-point of the temperature controller, the contact is opened.

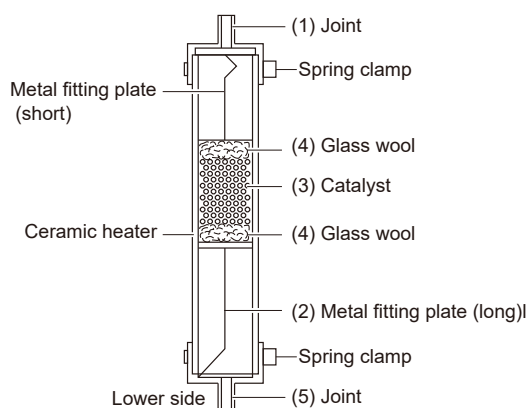
■ How to Replace Catalyst

⚠ CAUTION

Do not touch the converter section due to the high temperature. Wear protective gloves when replacing catalyst.

Catalyst should be replaced with new ones once every eight months. When flow rate is 0.5L/min or lower and NO₂ concentration is 10 ppm or lower.

1. Turn off the main power supply for converter.
2. When it has cooled down, by using a pair of pliers or the like, loosen and remove the spring clamps on the joint (1). The lower joint (5) can be easily removed by shifting it gradually with a blade-edge screwdriver. Be careful not to damage the ceramic heater.
3. After placing a catch pan to receive the falling catalyst (3) and glass wools (4), pull out the metal fitting plates (2).
4. Apply (4) to the end of metal fitting plate (long) (2), insert it from the lower side of the ceramic heater, then inject the new (3) from the top, using a funnel or alike.
5. Attach new joints (1) and (5) to the heater, and put on and tighten the spring clamps on both joints. Turn on the power.



Converter section

YOKOGAWA

YOKOGAWA ELECTRIC CORPORATION

Headquarters
9-32, Nakacho, 2-chome, Musashino-shi, Tokyo, 180-8750 JAPAN
Phone : 81-422-52-5555

Branch Sales Offices
Osaka, Nagoya, Hiroshima, Kurashiki, Fukuoka, Kitakyusyu

YOKOGAWA CORPORATION OF AMERICA

Head Office
12530 West Airport Blvd, Sugar Land, Texas 77478, USA
Phone : 1-281-340-3800 Fax : 1-281-340-3838

Georgia Office
2 Dart Road, Newnan, Georgia 30265, USA
Phone : 1-800-888-6400 Fax : 1-770-254-0928

YOKOGAWA AMERICA DO SUL LTDA.

Praca Acapulco, 31 - Santo Amaro, São Paulo/SP, BRAZIL, CEP-04675-190
Phone : 55-11-5681-2400 Fax : 55-11-5681-4434

YOKOGAWA EUROPE B. V.

Euroweg 2, 3825 HD Amersfoort, THE NETHERLANDS
Phone : 31-88-4641000 Fax : 31-88-4641111

YOKOGAWA ELECTRIC CIS LTD.

Grokholsky per 13 Building 2, 4th Floor 129090, Moscow, RUSSIA
Phone : 7-495-737-7868 Fax : 7-495-737-7869

YOKOGAWA CHINA CO., LTD.

3F Tower D Cartelo Crocodile Building, No.568 West Tianshan Road,
Shanghai 200335, CHINA
Phone : 86-21-62396262 Fax : 86-21-62387866

YOKOGAWA ELECTRIC KOREA CO., LTD.

(Yokogawa B/D, Yangpyeong-dong 4-Ga), 21, Seonyu-ro 45-gil, Yeongdeungpo-gu,
Seoul, 07209, KOREA
Phone : 82-2-2628-6000 Fax : 82-2-2628-6400

YOKOGAWA ENGINEERING ASIA PTE. LTD.

5 Bedok South Road, Singapore 469270, SINGAPORE
Phone : 65-6241-9933 Fax : 65-6241-2606

YOKOGAWA INDIA LTD.

Plot No.96, Electronic City Complex, Hosur Road, Bangalore - 560 100, INDIA
Phone : 91-80-4158-6000 Fax : 91-80-2852-0625

YOKOGAWA AUSTRALIA PTY. LTD.

Tower A, 112-118 Talavera Road, Macquarie Park NSW 2113, AUSTRALIA
Phone : 61-2-8870-1100 Fax : 61-2-8870-1111

YOKOGAWA MIDDLE EAST & AFRICA B.S.C.(C)

P.O. Box 10070, Manama, Building 577, Road 2516, Busaiteen 225, Muharraq,
BAHRAIN
Phone : 973-17-358100 Fax : 973-17-336100

Apr. '17

Printed in Japan