

# PMt2200

## Panel Mount Thermal Receipt Printer

### Features

- Thermal Line Printer
- Easy Paper Loading
- High Print Speed
- Bar Code
- Multiple Interfaces
- Horizontal design
- Uses TP58-80 Paper Roll

### Description:

The PMt2200 is an easy paper loading, thermal panel mount printer featuring a low profile horizontal design for easy package integration. The PMt2200 printer is a perfect companion for our flow computers and batch controllers and they are ideal for systems that require transaction printing.

### SIZE

Dimensions (WxDxH) 102 x 45 x 56 mm  
Weight 170 g

### GENERAL

Model PMt2200  
Print Method Thermal Line Printing  
Dots Per Line 384  
Dot Pitch 8 dots/mm  
No. Of Columns Font A  
Printing Width 48 mm  
Print Speed 40 mm/s  
Character Size 12x24, 8x16, 6x8 dots  
Paper Loading Easy Paper Loading

### POWER SUPPLY

Power Requirement 5-8.5 VDC or 9-24 VDC, 2.0 Amps

### COMMUNICATION

Interface RS232, USB, Parallel  
Data Buffer 16 KB  
Flash 64 KB

### PAPER

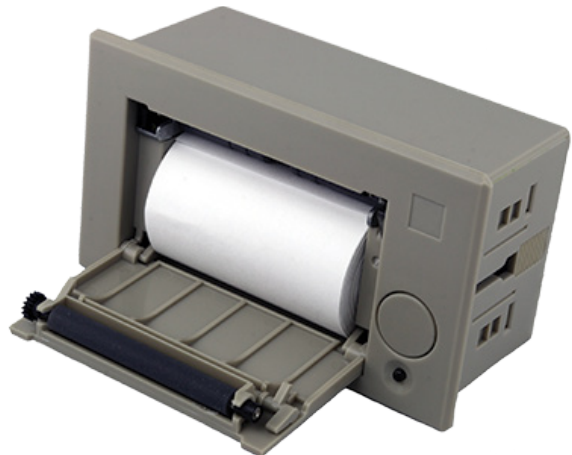
Paper Type Thermal Roll Paper  
Width 57mm  
Diameter 30mm  
Thickness ~80µm

### ENVIRONMENTAL

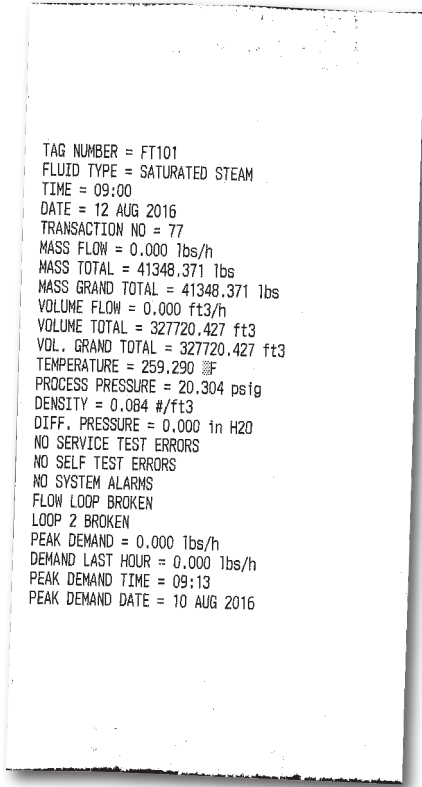
Operating Condition 5° to 50°C, 10 to 80% RH  
Storage Condition -20° to 60°C, 5 to 90% RH

### RELIABILITY

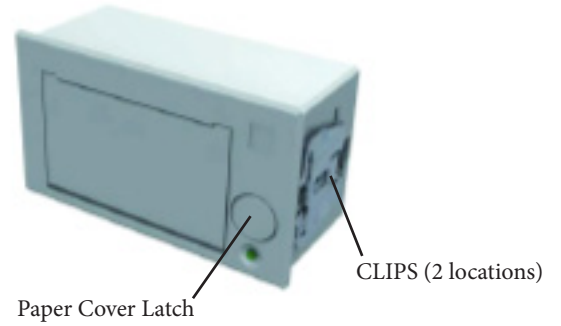
Printhead 100 Million Pulses, 100 km Feed Length  
Mechanism 10 Million Lines



**Sample Ticket:**



**Mounting:**



There are 2 clips on either side of the printer housing.  
Preparing for installation:

1. Create a 58mm x 104mm rectangular hole on your instrument's front panel.
2. Remove both clips then insert the printer in your instrument.

Installation:

1. Insert the printer inside the hole.
2. Attach the power and interface cables.
3. Attach clips on both sides of printer and push towards front panel.  
The clips are ratcheted; push as far as you can until the panel is tightly pinched between clips and printer front bezel.
4. Press the Paper Cover Latch to load paper. Please note that paper must be curling down.
5. Close the cover by applying even pressure on both ends.



Kessler-Ellis Products  
 10 Industrial Way East  
 Eatontown NJ 07724  
 800-631-2165 or 732-935-1320  
[www.kep.com](http://www.kep.com)

**How To Order:**

<b>EXAMPLE</b>	<b>P</b>	<b>Mt2200</b>	<b>N</b>
<b>Series</b>	PMT2200 = Panel Mount; Thermal Receipt Printer		
<b>Options</b>	N = NEMA 4X Wall Mount Enclosure with sub-panel & duplex outlet		

**Accessories**

- P2CA25M9ML6 = 6' Serial Cable for SUPERtrol I, SUPERtrol ILE, LEVELtrol II, SUPERtrol II
- P2CA25MFL6 = 6' Serial Cable for MS716 or any Flow Computer with RS232 terminal block
- PMt2200PR = Paper Roll for PMt2200 Printer; Single-ply Thermal (Pack of 10)