

1. WIRING

- (1) Remove box tightening glands A (2 pcs.) and then remove seal plate B (Fig.1).
- (2) Pass cable (O.D. $\phi 9.8 \sim 10.6$) through gland A and packing. Then, pull the cable in the box and connect the cable to arrester main body as shown in Fig.2.
- (3) Tighten gland A as shown in Fig.1 and fix the cable.

TERMINAL CONNECTION

Terminal	Application	4~20, 10~50mA signal, Thermocouple	RTD, Potentiometer	100, 200V AC power supply
Protect side terminal	A	+	A	L1
	B	-	B	L2
	C	-	B	L2
Surge side terminal	1	+	A	L1
	2	-	B	L2
	3	-	B	L2

Terminal	Application	2-wire type pulse signal (less than 50V, 90V)	3-wire type pulse signal (less than 50V)	100, 200V AC power supply
Protect side terminal	A	+	+	L1
	B	-	+	L2
	C	-	-	L2
Surge side terminal	1	+	+	L1
	2	-	+	L2
	3	-	-	L2

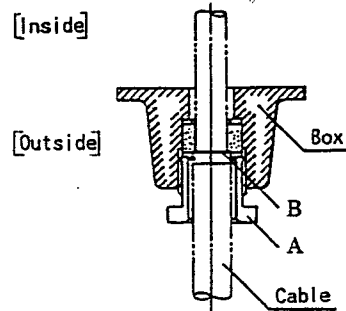
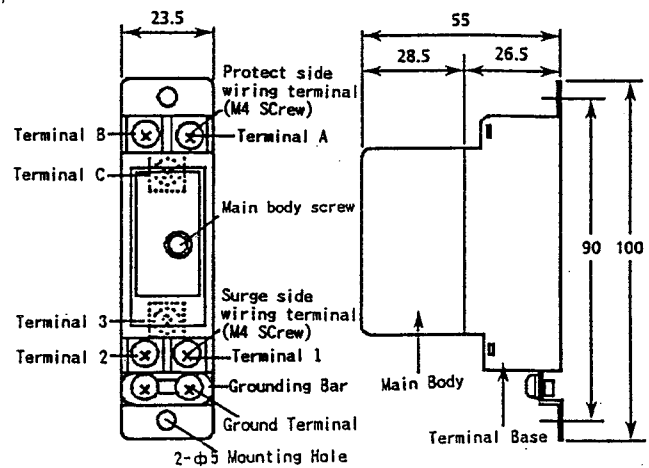


FIG.1 CABLE GLAND



Unit : mm

FIG.2 ARRESTER TERMINAL CONNECTION

2. WALL MOUNTING (AR-WX)

- (1) Mount the box on the wall with M8 screw. (2 places shown C in Fig.3)

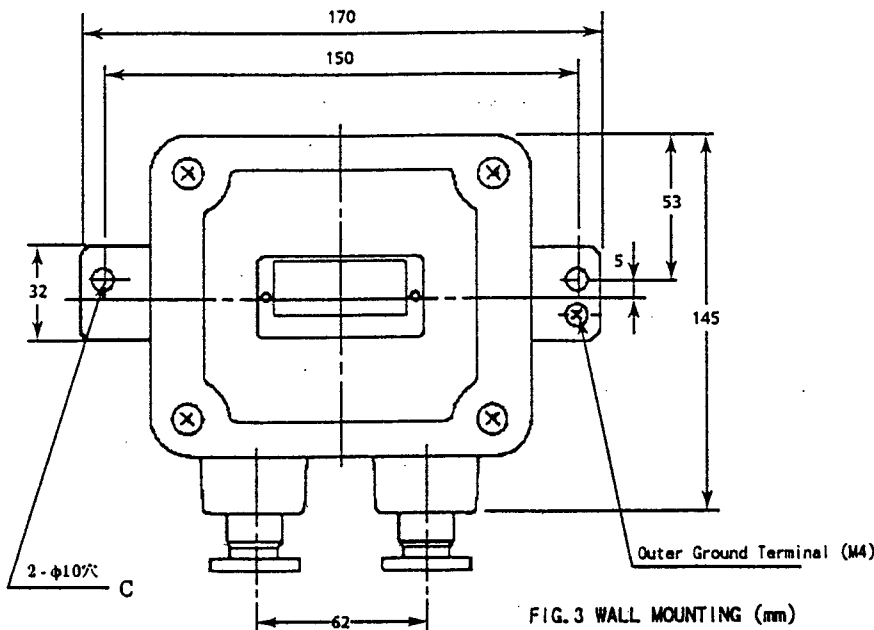


FIG.3 WALL MOUNTING (mm)

3. PIPE INSTALLATION (AR-PX)

- (1) Install metal fitting D (furnished) on box with M5 screw. (Fig.4)
- (2) Set V cut section (pipe receptacle) of metal fitting E (furnished) to direction of pipe installation (vertical or horizontal) and install the box on D with M8 screw. (Fig.4)
- (3) Install the box on the pipe with U-bolt. (Fig.4)

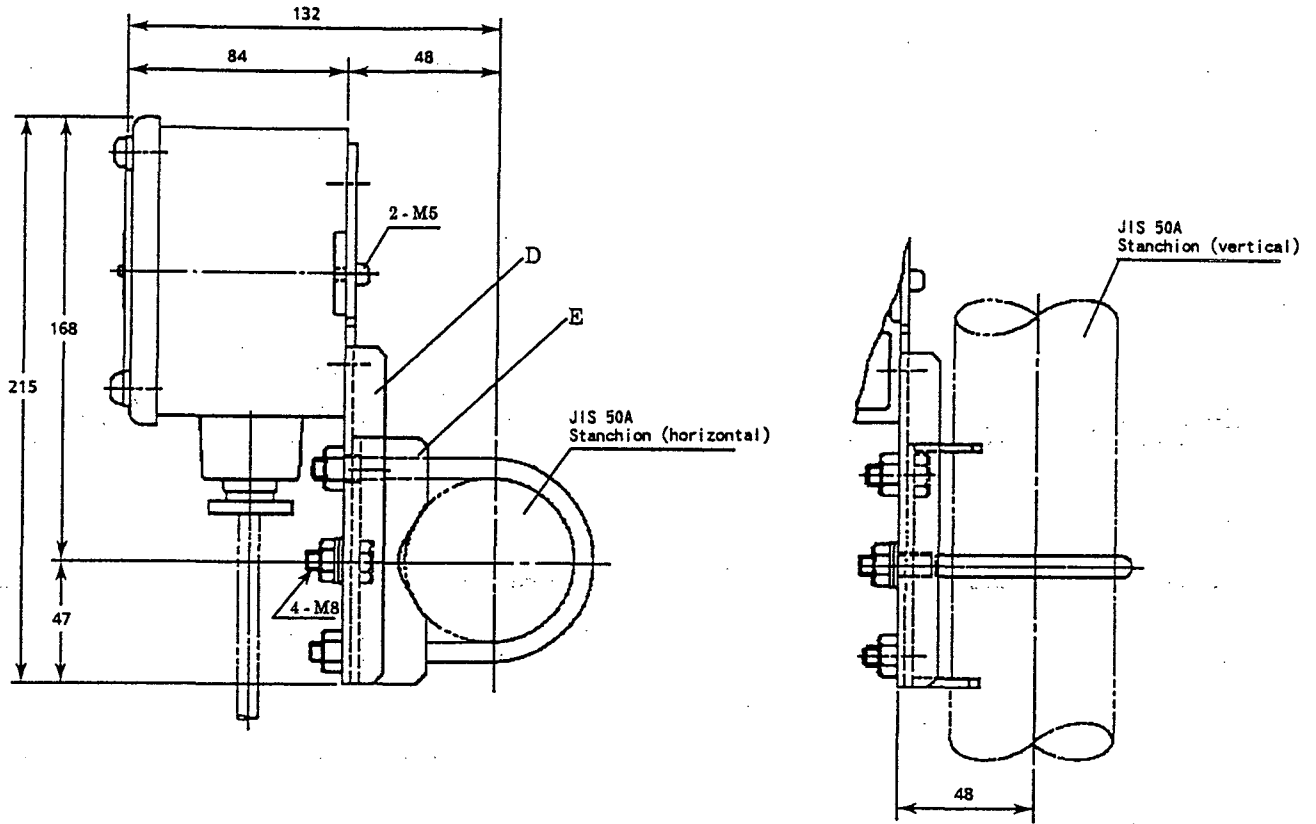


FIG.4 PIPE INSTALLATION (mm)

Subject to change without notice for grade up quality and performance.