

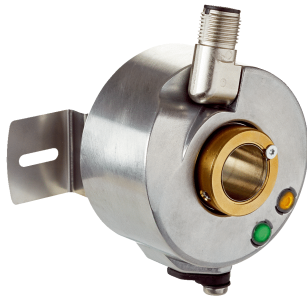


DUS60

Encoders with configurable settings for logistics conveyor and general machine applications

INCREMENTAL ENCODERS

SICK
Sensor Intelligence.



Technical data overview

Pulses per revolution	1 ... 2,400 ¹⁾
Mechanical design	Solid shaft, face mount flange Blind hollow shaft Through hollow shaft, Front clamp Through hollow shaft, rear clamping (depending on type)
Shaft diameter	6 mm 10 mm 3/8" 1/4" 8 mm 12 mm 5/8" 1/2" 15 mm 14 mm (depending on type)
Connection type	Male connector, M12, 8-pin, universal Male connector, M12, 4-pin, universal Cable, 8-wire, universal (depending on type)
Communication interface	Incremental
Communication Interface detail	TTL / HTL
Supply voltage	4.75 ... 30 V
Enclosure rating	IP65
Output frequency	+ 60 kHz
Operating temperature range	-30 °C ... +90 °C

¹⁾ Available pulses per revolution see type code.

Product description

The DUS60 is a rotary incremental encoder with built-in DIP switch configuration for the resolution, output voltage, and counting direction. The DUS60 configuration switches reduce the number of variants, enable easy replacement and quick commissioning, and increases the likelihood that spare parts will be in stock – all without any additional programming tools. The on-board status and signal LEDs and optional fault output quickly indicate the functionality of the encoder, minimizing time required for both installation and troubleshooting. The DUS60 offers solid shaft and hollow bore mounting with rotating connectors or universal cables for quick and flexible mechanical installation. With resolutions up to 2,400 pulses, the DUS60 is ideal for factory and logistics automation applications.

At a glance

- Solid shaft or hollow bore incremental encoder
- DIP switches for configuring resolution, signal output, and counting direction
- Universal 4.5 V ... 30 V supply
- LEDs that indicate encoder status and output signal
- Rotatable M12 male connector, 4-pin or 8-pin, or universal cable outlet
- Optional fault output directly from encoder

Your benefits

- Quickly commission the encoder using the built-in DIP switches. No additional programming tool or laptop required
- Status and signal LEDs quickly indicate whether the encoder is properly connected, functional, or needs to be replaced
- Universal power supply and a rotatable connector reduce the number of variants required and provide increased installation flexibility
- Anti-dither functionality maintains a high level of productivity also in high vibration applications
- Compatible with existing and low-cost input cards with output types like Clockwise/Counterclockwise and Signal/Direction

Fields of application

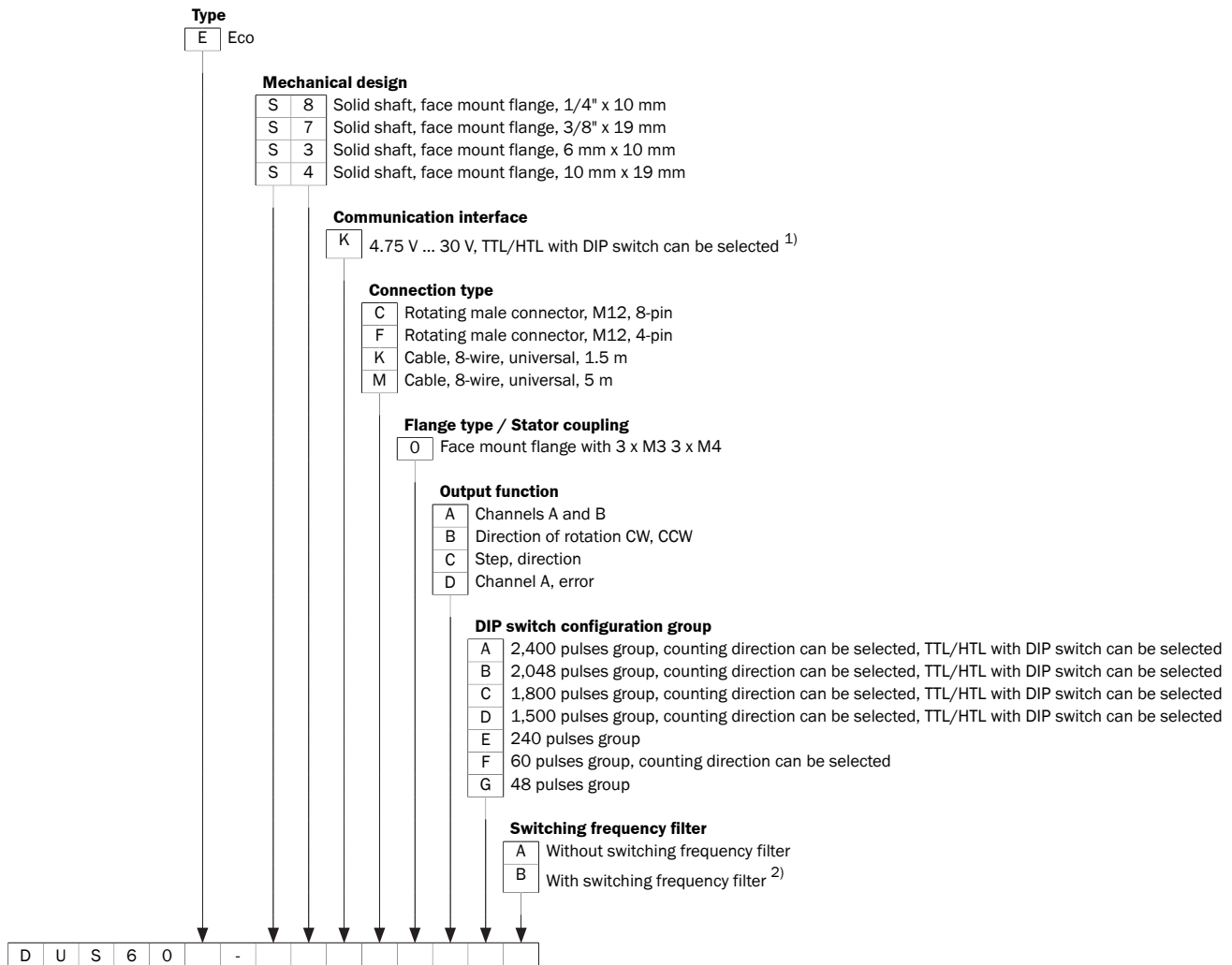
Measuring the position, speed and distance in applications with low speeds and low resolution in the logistics and factory automation markets.

- Conveyor belts
- Packaging machines
- Printing machines
- Storage systems

Type code

Other models and accessories → www.sick.com/DUS60

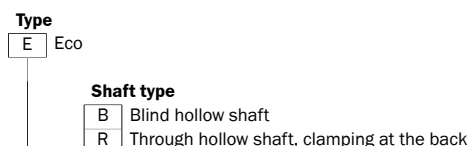
Solid shaft



¹⁾ Output voltage selection not available for DIP switch configurations E, F and G. Output voltage value depends on supply voltage.

²⁾ Not available for output function: Channels A and B (A). Connection type must be M12 male connector 4-pin (F).

Hollow shaft



SICK AT A GLANCE

SICK is one of the leading manufacturers of intelligent sensors and sensor solutions for industrial applications. A unique range of products and services creates the perfect basis for controlling processes securely and efficiently, protecting individuals from accidents and preventing damage to the environment.

We have extensive experience in a wide range of industries and understand their processes and requirements. With intelligent sensors, we can deliver exactly what our customers need. In application centers in Europe, Asia and North America, system solutions are tested and optimized in accordance with customer specifications. All this makes us a reliable supplier and development partner.

Comprehensive services complete our offering: SICK LifeTime Services provide support throughout the machine life cycle and ensure safety and productivity.

For us, that is “Sensor Intelligence.”

WORLDWIDE PRESENCE:

Contacts and other locations –www.sick.com