

General Specifications

Model MLD Loop Powered Process Indicator

GS 61A01A01-01E-A

The Model MLD field mounted indicator receives DC voltage or current signals from electronic Transmitters and indicates process measurement values. Standard models are NEMA4X and Explosion Proof.



STANDARD SPECIFICATIONS

Voltage Drop:
1.8V typ., 2V max.

Scale:
0-1999 w/decimal

Accuracy:
± 0.05% of full scale (1999) ±1 count

Operating Temperature Range:
-20 to 60°C

Temperature drift: ±0.3 Count/°C

Insulation Resistance: Between input terminals and case 100 Mohm at 500 V DC

Dielectric Strength: Between input terminals and case: 1000 VAC for 1 minute.

Mounting: Nominal 2" (50mm) pipe mount or surface.

Explosion Protection Type: FM, CSA, EXPLOSIONPROOF CL1, DIV1, GROUPS A,B,C,D, DUST-IGNITIONPROOF CLII / III, GROUPS E,F,G

Case and Cover: Die cast aluminum or 316 Stainless Steel, baked polyurethane paint. Moss Green (Stainless Steel is unpainted); NEMA 4X

Electrical Connection: ½ x 14 NPT or M20 x 1.5

Weight: 2.7 lbs

Model	Suffix Codes	Description
MLD		Field Mounted Loop Indicator (Digital)
Input Signal	-A	4 to 20 mA DC
Mounting	1 2	2" Horizontal Pipe 2" Vertical Pipe (or wall mount)
Housing	/1 /2	Cast Aluminum Alloy - (Standard Housing) SUS316 Cast Stainless Steel and ASTM CF-8M
Electrical Connection	/00 /20 /30 /40	ANSI ½ NPT female, without blind plug ANSI ½ NPT female, 316 Stainless Steel blind plug ISO M20 female, without blind plug ISO M20 female, 316 Stainless Steel blind plug
Ex Protection	/FF1 /CF1	FM Explosion Proof CSA Explosion Proof
Optional Specifications		
Coating	/X1 /X2	Epoxy resin coating Polyurethane-Epoxy Anti-corrosion coating
Paint	/P1 /P2 /P3 /P4 /P5 /P6 /P7	Light Blue (RAL # 5012) Orange (RAL # 2008) Red (Munsell # 7.5 R4/14) Mint Green Silver (RAL # 9006) Yellow (RAL # 1018) Gray (RAL # 7046)
Calibration	/ENG	Engineering Unit Calibration (MLD Only)
Stainless Steel Tag	/SST	Stainless Steel tag screw attached to housing
Stainless Steel Tag	/SSW	Stainless Steel tag wired to housing

ORDERING INSTRUCTIONS

1. Model and suffix codes.
2. Option codes

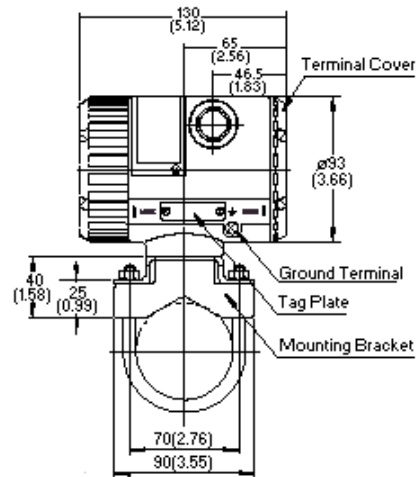
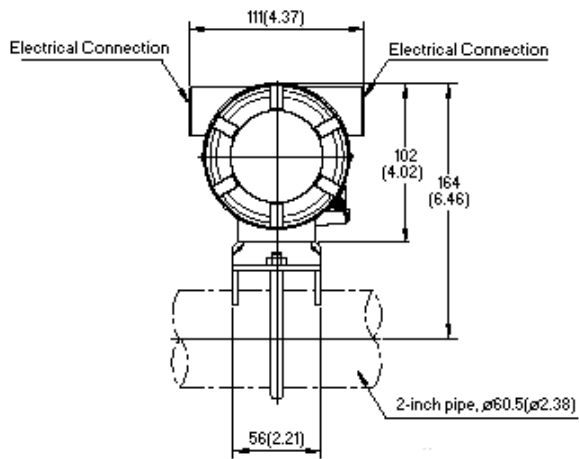
Example Ordering Instructions:

MLD-A1/1/00/FF1/ENG/SST
0-200 lnH2O
FT-201

Field Mounted Loop Indicator (Digital), 4 to 20 mA DC, 2" Horizontal Pipe, FM Explosion Proof Scale in Engineering Units. Please specify Engineering units when ordering /ENG Specify Tag Number when ordering /SST or /SSW.

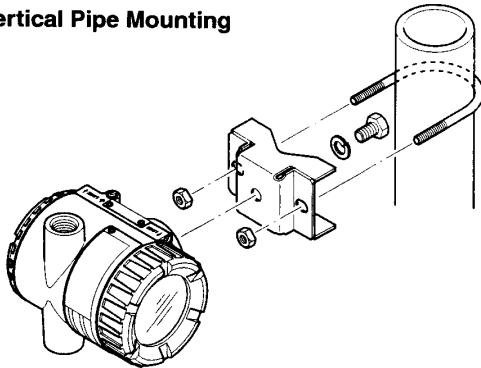
DIMENSIONS

Unit: mm (Approx. inch)

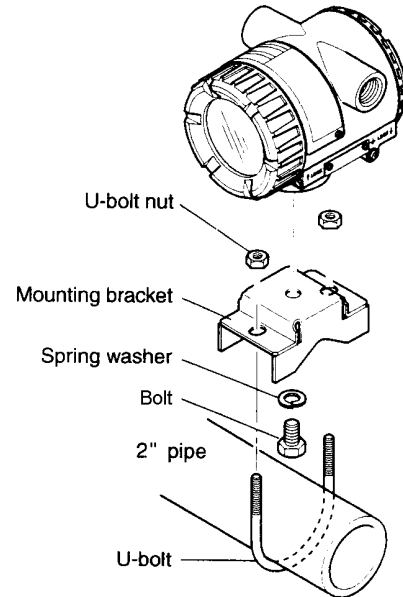


Mounting

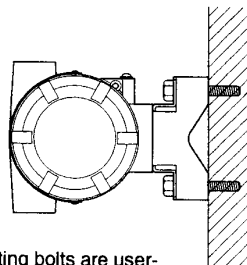
Vertical Pipe Mounting



Horizontal Pipe Mounting



Wall Mounting



Note: Wall mounting bolts are user-supplied.

WIRING

The loop powered indicator series is powered by the current loop and does not require external power. All devices must be wired in series with the current loop. Twisted pair shielded cable is recommended.

The following is an example of the MLD Loop Indicator connected to an EJA Pressure Transmitter
(Note: The EJA Transmitter below can be replaced with any 4-20mA 2 wire device.)

