

YOKOGAWA



TABLE OF CONTENTS

- ◆ ***PROPLUS*** Series Overview
- ◆ ***PROPLUS*** Software
- ◆ Accessories & Enclosures
- ◆ ***PROPLUS*** Demo

PROPLUS SERIES OVERVIEW



Process

YPP6000



Dual-Input

YPP6060



Strain Gauge

YPP6100



Temperature

YPP7000



Flow Rate/Total

YPP6200



Flow Rate/Total

YPP6300



Batch Control

YPP6210



Batch Control

YPP6310

PROPLUS COMMON FEATURES



- ◆ Dual-Line 6-Digit Display, 0.60" & 0.46"
- ◆ NEMA 4X, IP65 Front
- ◆ Universal 85-265 VAC, or 12/24 VDC Input Power Models
- ◆ Sunlight Readable Display Models
- ◆ Programmable Display & Function Keys
- ◆ 2 or 4 Relays + Isolated 4-20 mA Output Options
- ◆ External 4-Relay & Digital I/O Expansion Modules
- ◆ USB, RS-232, RS-485 Serial Communication Options
- ◆ Modbus[®] RTU Communication Protocol Standard
- ◆ Free **PROPLUS** Software for Operation, Monitoring, and Programming

PROPLUS DISPLAY FEATURES



PROCESS METER



- ◆ 0-20 mA, 4-20 mA, 0-5 V, 1-5 V, and ± 10 V Inputs
- ◆ Dual-Scale for Level Applications Single Input
- ◆ Isolated 24 VDC @ 200 mA Transmitter Power Supply
- ◆ Signal Input Conditioning for Flow & Round Horizontal Tanks
- ◆ 32-Point, Square Root, or Exponential Linearization
- ◆ Multi-Pump Alternation Control

YPP6000

DUAL-LINE DISPLAY MAKES ALL THE DIFFERENCE!



YPP6000 Process Meter

DUAL-LINE DISPLAY MAKES ALL THE DIFFERENCE!



YPP6000 Dual-Scale (Gallons & Percent)

DUAL-LINE DISPLAY MAKES ALL THE DIFFERENCE!



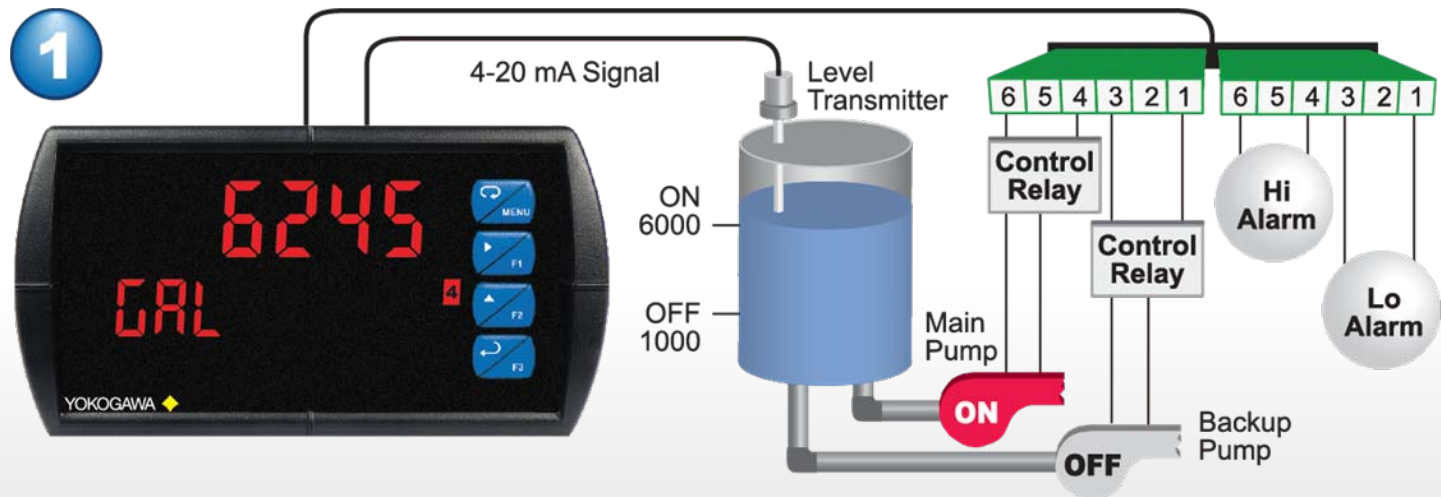
YPP6000 Dual-Scale (Gallons & mA)

DUAL-LINE DISPLAY MAKES ALL THE DIFFERENCE!



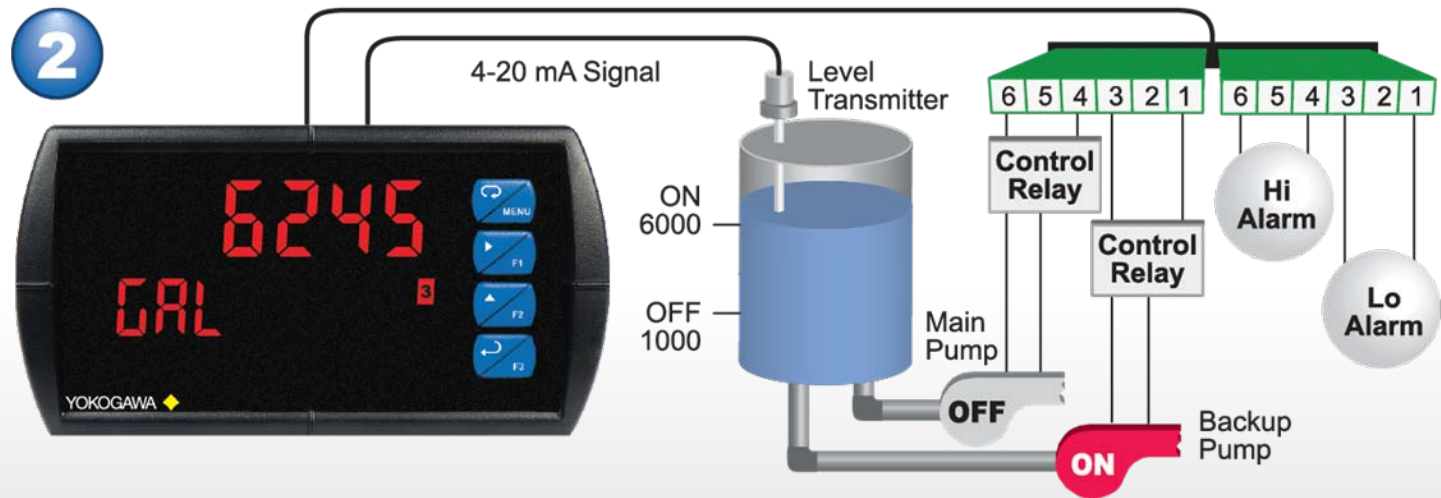
Pressure Indication

PUMP ALTERNATION CONTROL



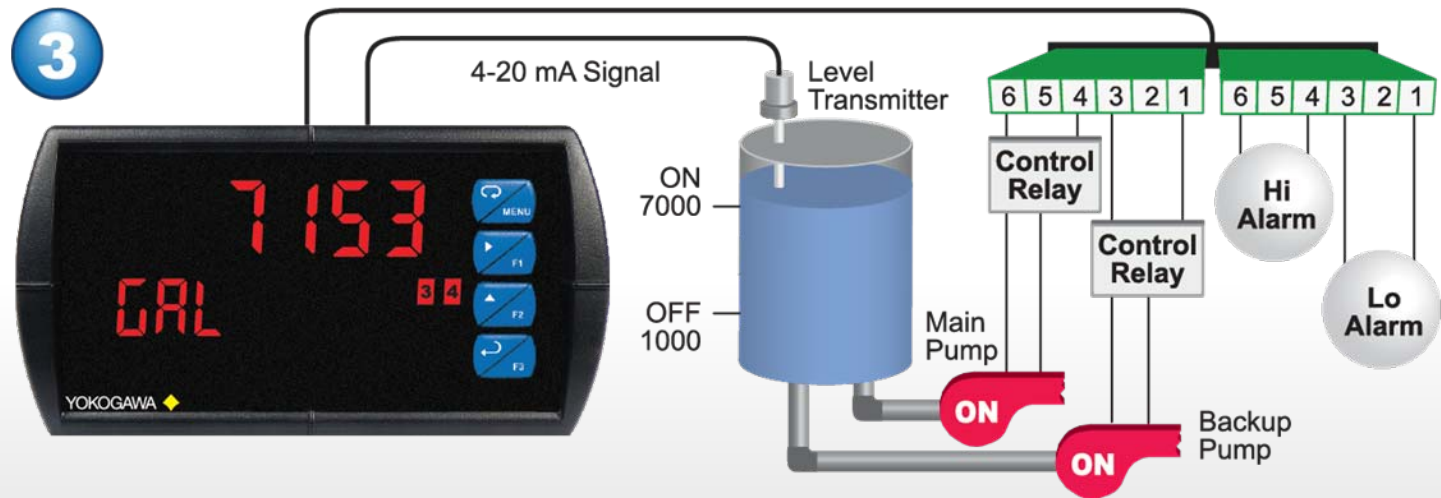
Relay #4 turns the main pump on at 6000 gallons and turns it off at 1000 gallons.

PUMP ALTERNATION CONTROL



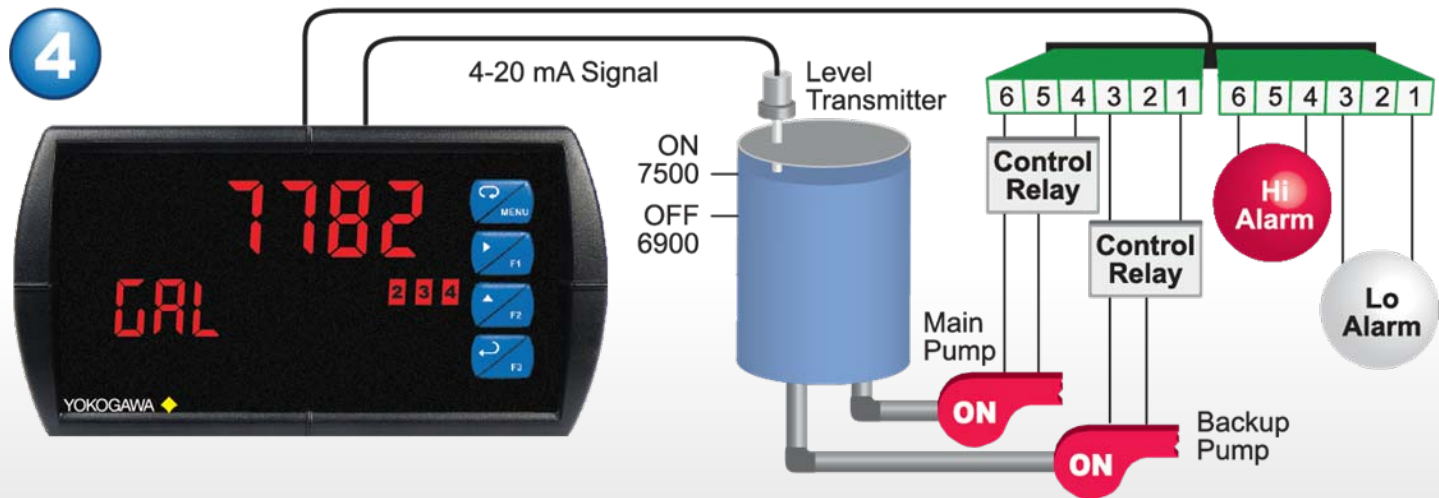
With the Pump Alternation feature activated, the next time the level reaches 6000 gallons, relay #3 transfers and starts the backup pump.

PUMP ALTERNATION CONTROL



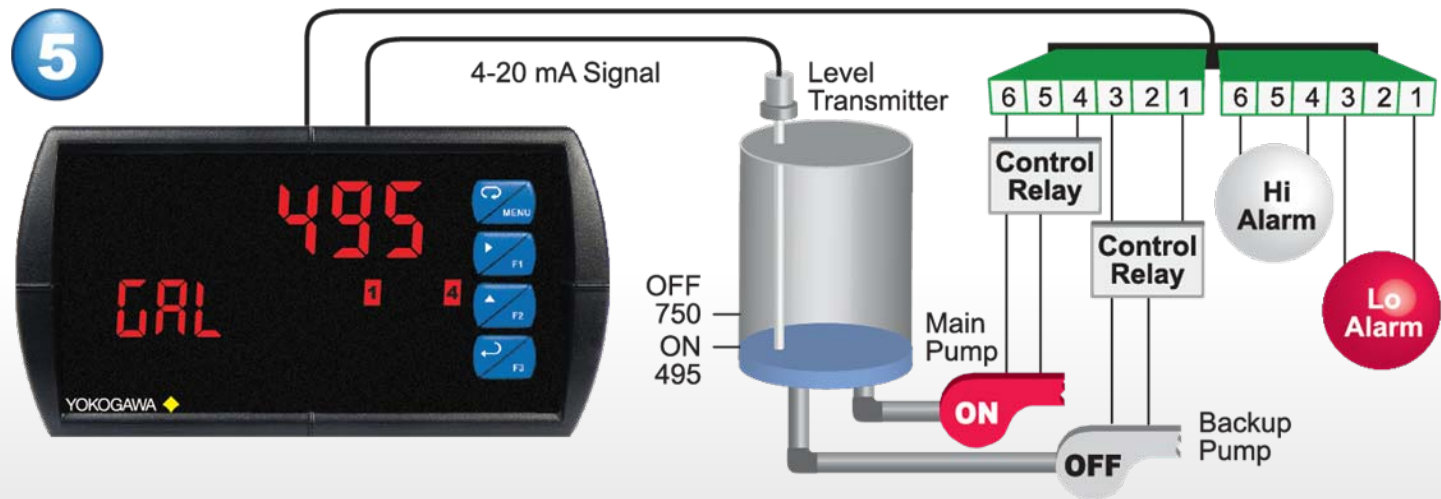
If the backup pump is not able to keep up, and the level reaches 7000 gallons, relay #4 transfers and starts the main pump as well.

PUMP ALTERNATION CONTROL



Relay #2 trips the High Level Alarm at 7500 gallons and resets at 6900 gallons.

PUMP ALTERNATION CONTROL



Relay #1 trips the Low Level Alarm at 495 gallons and resets at 750 gallons.

DUAL-INPUT PROCESS METER



- ◆ Dual Process Inputs with Math Functions
- ◆ Addition, Difference, Average, Multiplication, Division, Min, Max, Weighted Average, Ratio, Concentration, & More
- ◆ 0-20 mA, 4-20 mA, 0-5 V, 1-5 V, and ± 10 V Inputs
- ◆ 32-Point, Square Root, or Exponential Linearization
- ◆ Multi-Pump Alternation Control

YPP6060

DUAL-LINE DISPLAY MAKES ALL THE DIFFERENCE!



Math Function & Tag

DUAL-LINE DISPLAY MAKES ALL THE DIFFERENCE!



Math Function & Inputs A & B

DUAL-LINE DISPLAY MAKES ALL THE DIFFERENCE!



Input Channels A & B

STRAIN GAUGE METER



- ◆ 0-10, 0-20, ± 10 , ± 20 , ± 100 , ± 200 mV Inputs
- ◆ Selectable 5, 10, or 24 VDC Excitation Power Supply
- ◆ Capture or Programmable Tare Feature
- ◆ Ratiometric Operation
- ◆ Dual-Scale Feature – Single Input
- ◆ Rounding Function 1, 2, 5, 10, 20, 50, or 100
- ◆ Auto-zero Feature Eliminates Zero Drift

YPP6100

ANALOG INPUT RATE/TOTALIZER



- ◆ 0-20 mA, 4-20 mA, 0-5 V, 1-5 V, ± 10 V Inputs
- ◆ Isolated 24 VDC @ 200 mA Transmitter Power Supply
- ◆ Signal Input Conditioning for Flow & Round Horizontal Tanks
- ◆ Rate Displayed as Units per Second, Minute, Hour, or Day
- ◆ Total, Grand Total or Non-Resettable Grand Total
- ◆ 9-Digit Totalizer with Total Overflow Feature
- ◆ 32-Point Linearization, Square Root, or Programmable Exponent
- ◆ Multi-Pump Alternation Control

YPP6200

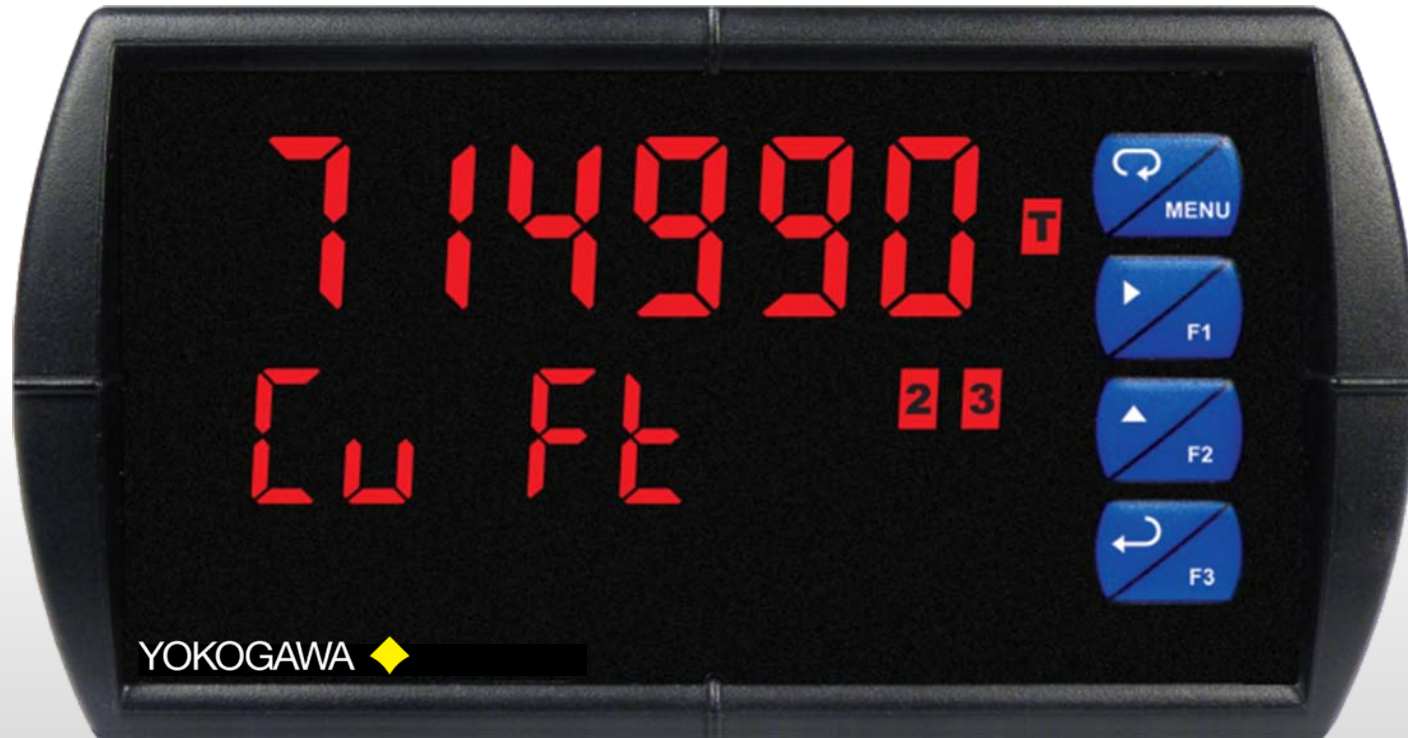


DUAL-LINE DISPLAY MAKES ALL THE DIFFERENCE!



Flow Rate Indication

DUAL-LINE DISPLAY MAKES ALL THE DIFFERENCE!



Flow Total Indication

DUAL-LINE DISPLAY MAKES ALL THE DIFFERENCE!



Rate / Total Indication

DUAL-LINE DISPLAY MAKES ALL THE DIFFERENCE!



Total & Grand Total Indication

PULSE INPUT RATE/TOTALIZER



YPP6300

- ◆ Pulse, Open Collector, NPN, PNP, TTL, Switch Contact, Sine Wave (Coil), Square Wave Inputs
- ◆ Gate Function for Rate Display of Slow Pulse Rates
- ◆ Isolated 24 VDC @ 200 mA Transmitter Power Supply
- ◆ Rate Displayed as Units per Second, Minute, Hour, or Day
- ◆ Total, Grand Total or Non-Resettable Grand Total
- ◆ 9-Digit Totalizer with Total Overflow Feature
- ◆ K-Factor Calibration or Scale with up to 32-Point Linearization

ANALOG INPUT BATCH CONTROL



YPP6210

- ◆ 0-20 mA, 4-20 mA, 0-5 V, 1-5 V, ± 10 V Inputs
- ◆ Start/Pause/Stop, Change Batch with Front Panel Buttons
- ◆ Single or Multi-Stage Batch Control (Up to 8 Relays)
- ◆ Automatic Overrun Correction
- ◆ Rate in Units per Second, Minute, Hour, or Day
- ◆ Automatic or Manual Batch Control
- ◆ Low or High Flow Alarms
- ◆ 9-Digit Grand Total with Overflow Feature
- ◆ Count Up or Down with Each Batch

DUAL-LINE DISPLAY MAKES ALL THE DIFFERENCE!



Batch & Total Preset

DUAL-LINE DISPLAY MAKES ALL THE DIFFERENCE!



Batch Total & Batch Count

DUAL-LINE DISPLAY MAKES ALL THE DIFFERENCE!



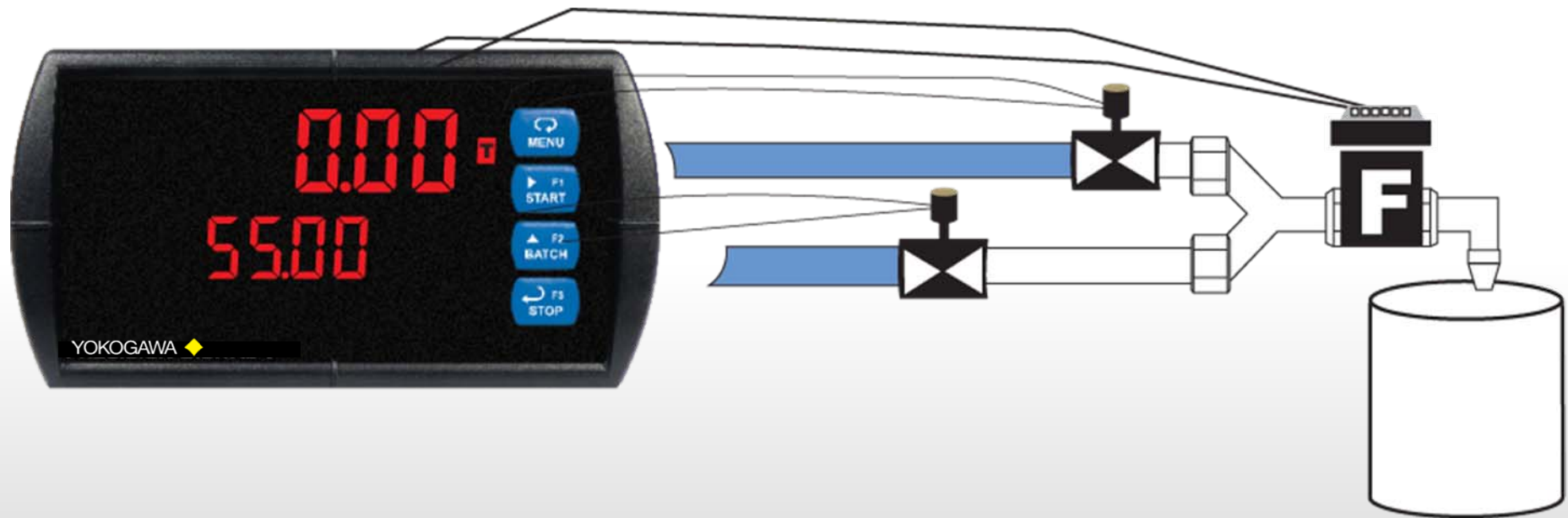
Batch Total & Rate

DUAL-LINE DISPLAY MAKES ALL THE DIFFERENCE!



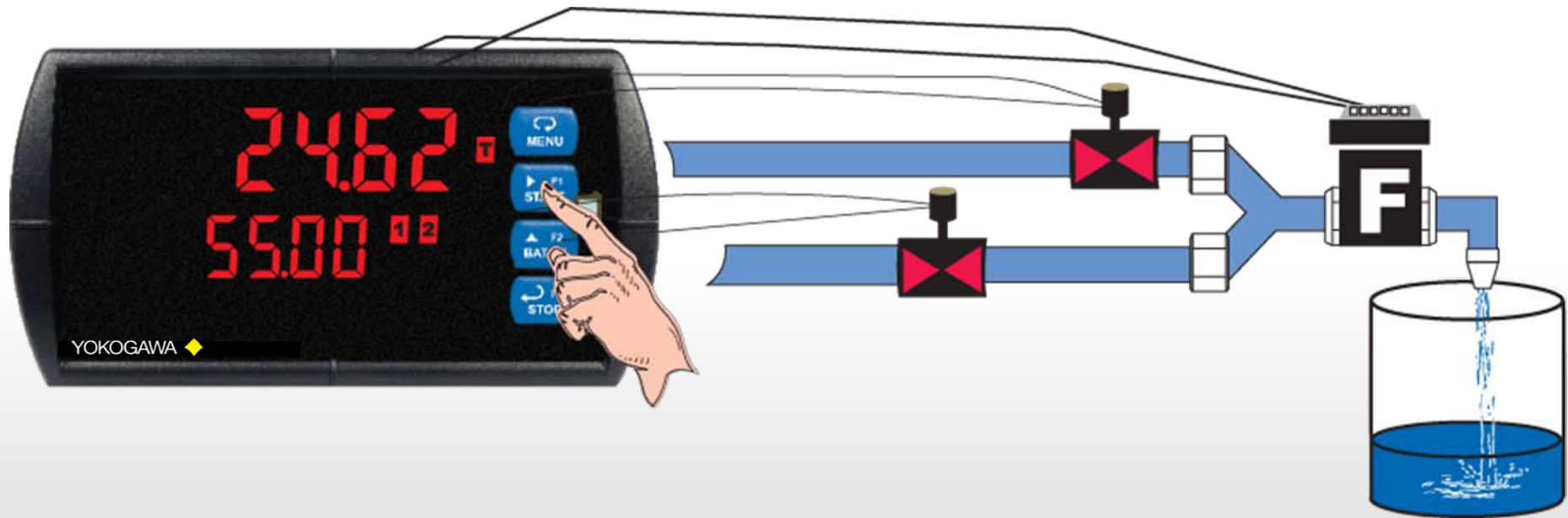
Batch Total & Grand Total

MANUAL MULTI-STAGE BATCH CONTROL OPERATION



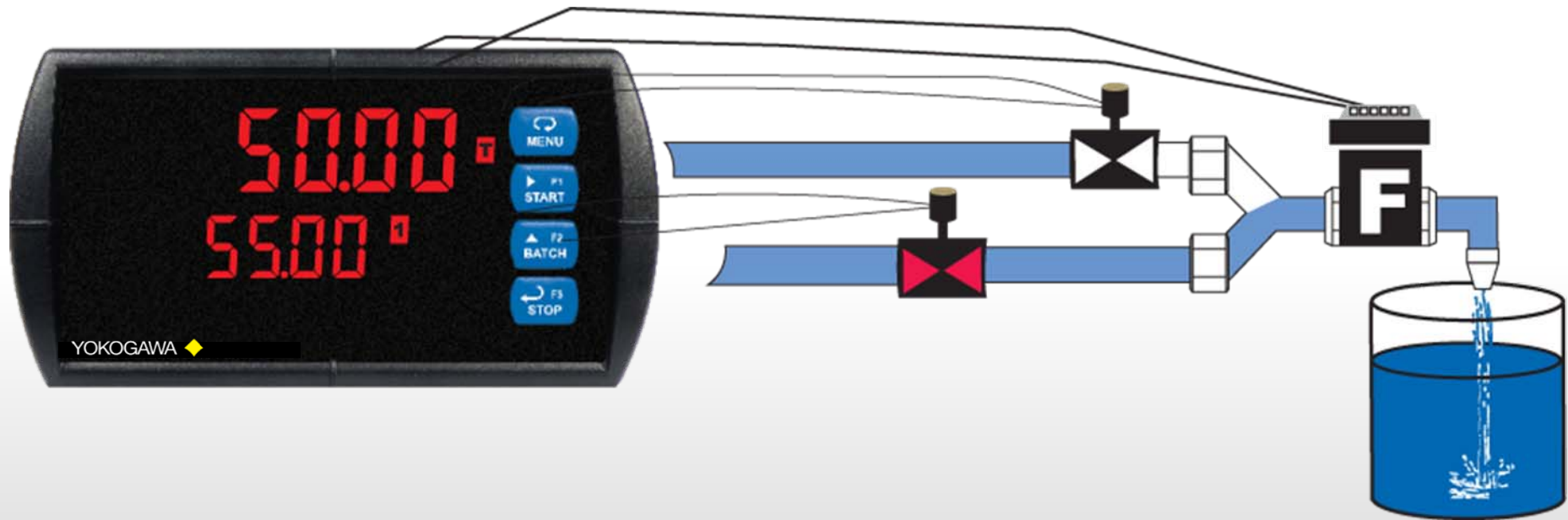
Both valves are closed with an empty barrel in place. The batched total is displayed in the upper display, the preset is selected for the lower display.

MANUAL MULTI-STAGE BATCH CONTROL OPERATION



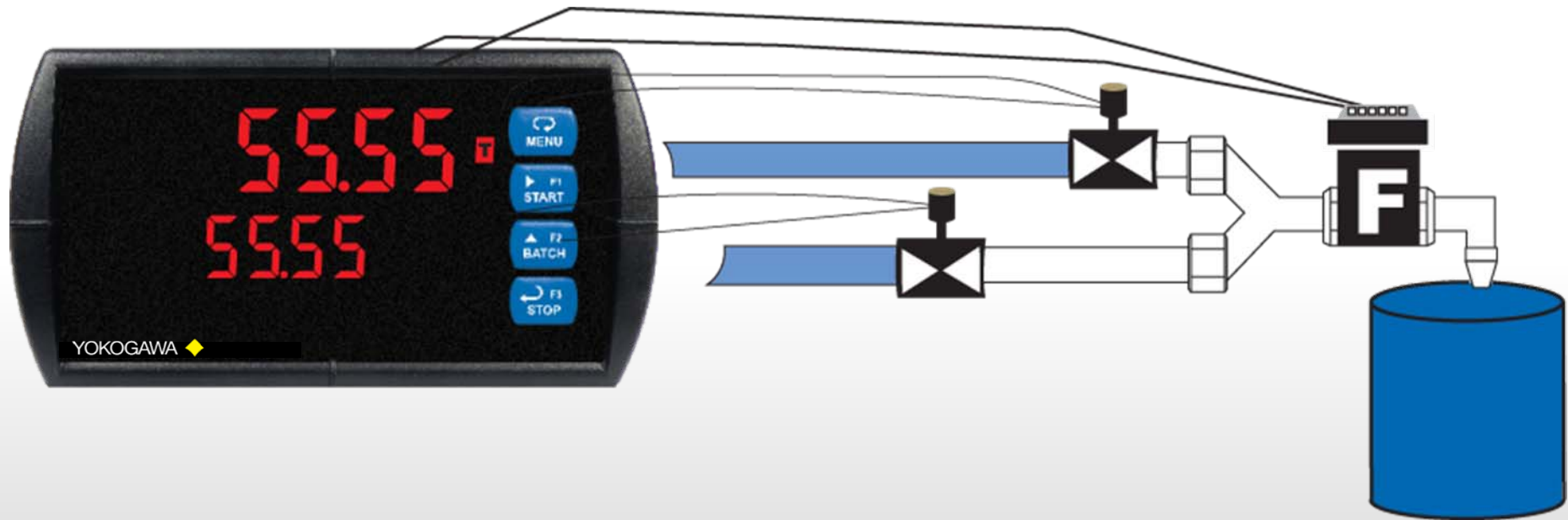
The START button is pressed. Both valves open. The barrel begins to fill.

MANUAL MULTI-STAGE BATCH CONTROL OPERATION



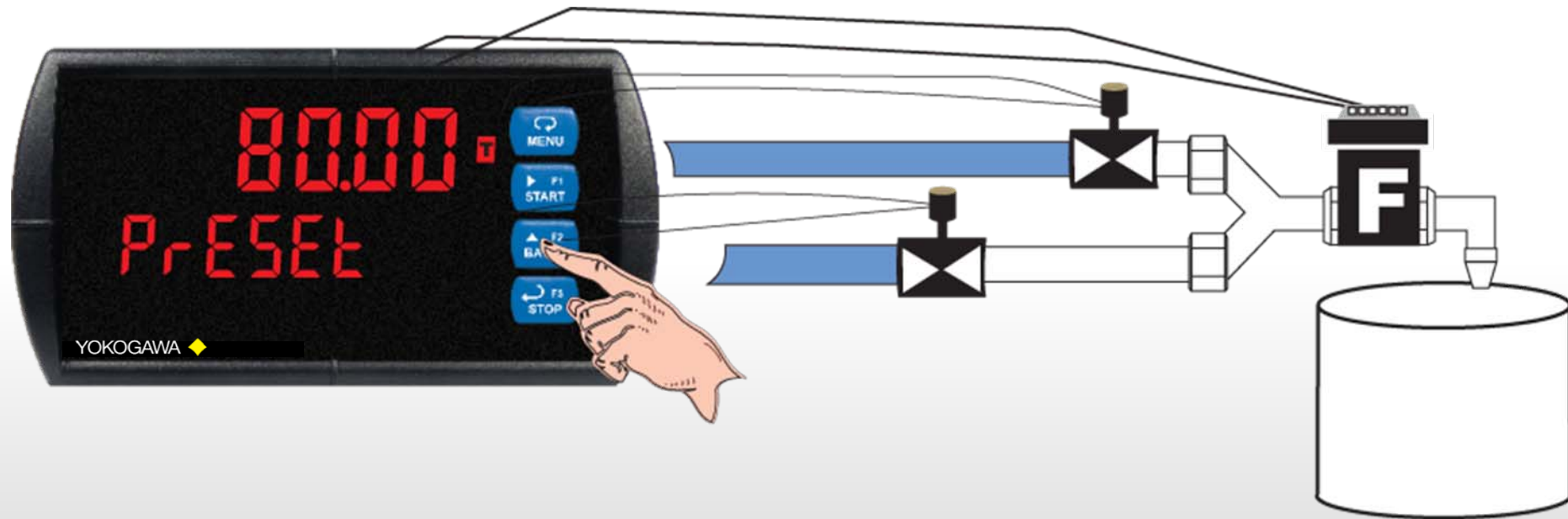
When the batch total reaches a value of 50.00 (Preset [55.00] – Preclose [5.00]) the full-flow valve closes. The fill rate of the tank slows as a result.

MANUAL MULTI-STAGE BATCH CONTROL OPERATION



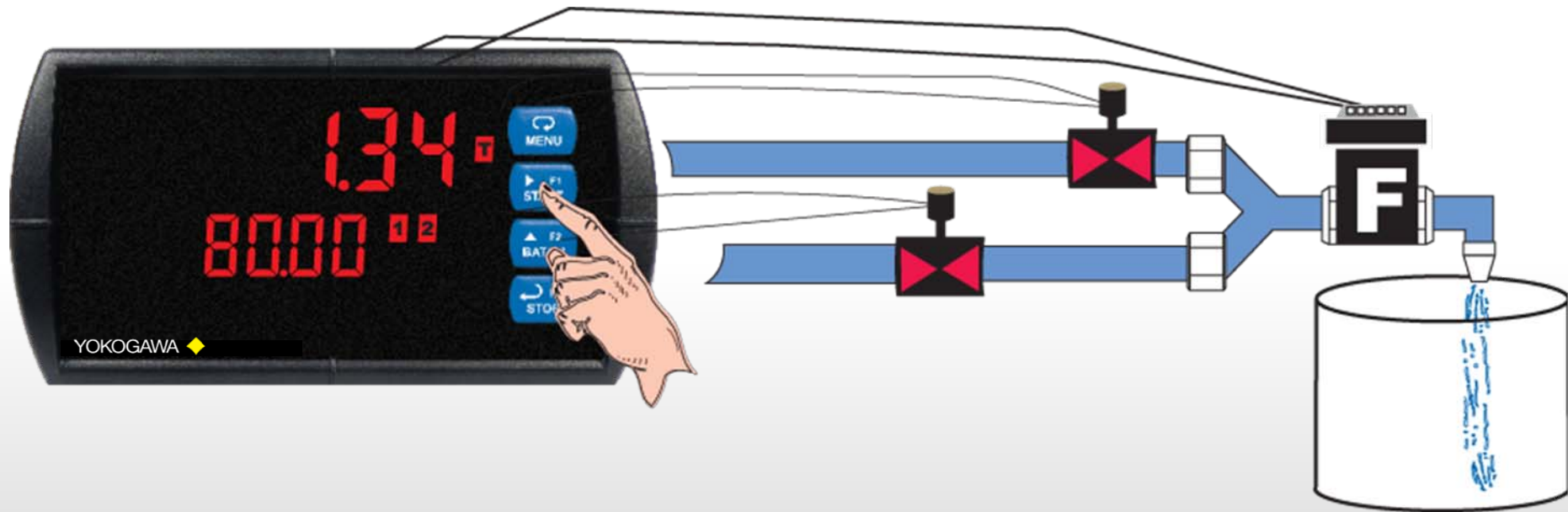
When the batch total equals the preset amount, the restricted-flow valve closes. The barrel is now full. If some overrun occurs, the next batch will adjust for this offset amount to maintain accuracy.

MANUAL MULTI-STAGE BATCH CONTROL OPERATION



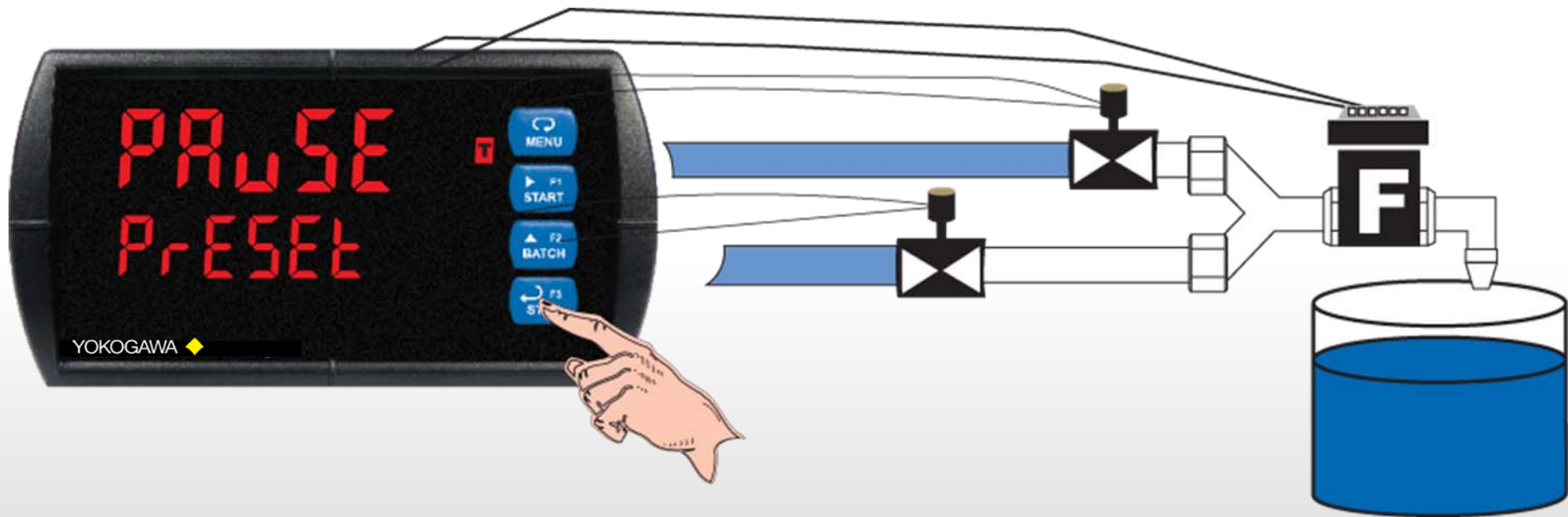
After placing a new, empty barrel, a new preset fill amount may be selected with the Batch key, while the process is stopped.

MANUAL MULTI-STAGE BATCH CONTROL OPERATION



Press the START key and a new batch will begin. With both valves open, the process continues.

MANUAL MULTI-STAGE BATCH CONTROL OPERATION



At any time, the STOP button may be pressed, once to Pause the process, or twice to cancel the batch, which stops the process.

PULSE INPUT BATCH CONTROL



YPP6310

- ◆ Pulse, Open Collector, NPN, PNP, TTL, Switch Contact Sine Wave (Coil), Square Wave Inputs
- ◆ Start/Pause/Stop, Change Batch with Front Panel Buttons
- ◆ Single or Multi-Stage Batch Control (Up to 8 Relays)
- ◆ Automatic Overrun Correction
- ◆ Rate in Units per Second, Minute, Hour, or Day
- ◆ Automatic or Manual Batch Control
- ◆ Low or High Flow Alarms
- ◆ 9-Digit Grand Total with Overflow Feature
- ◆ Count Up or Down with Each Batch

TEMPERATURE METER



- ◆ J, K, T, E, R, S, B, N, C Thermocouples
- ◆ 100 or 1000 Ω Platinum, 10 Ω Copper, 120 Ω Nickel RTDs
- ◆ 1° or 0.1° Resolution
- ◆ Averages up to 10 RTD Sensors
- ◆ Automatic Cold Junction Compensation



YPP7000

DUAL-LINE DISPLAY MAKES ALL THE DIFFERENCE!



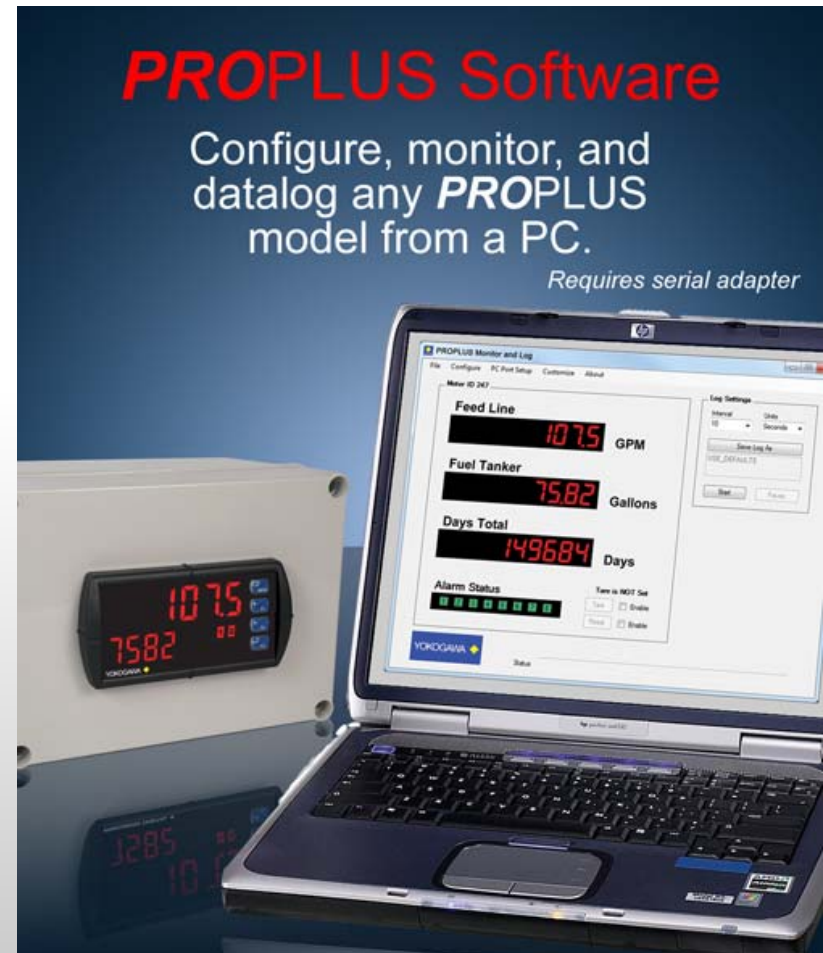
PD7000 Temperature Meter

PROPLUS SOFTWARE

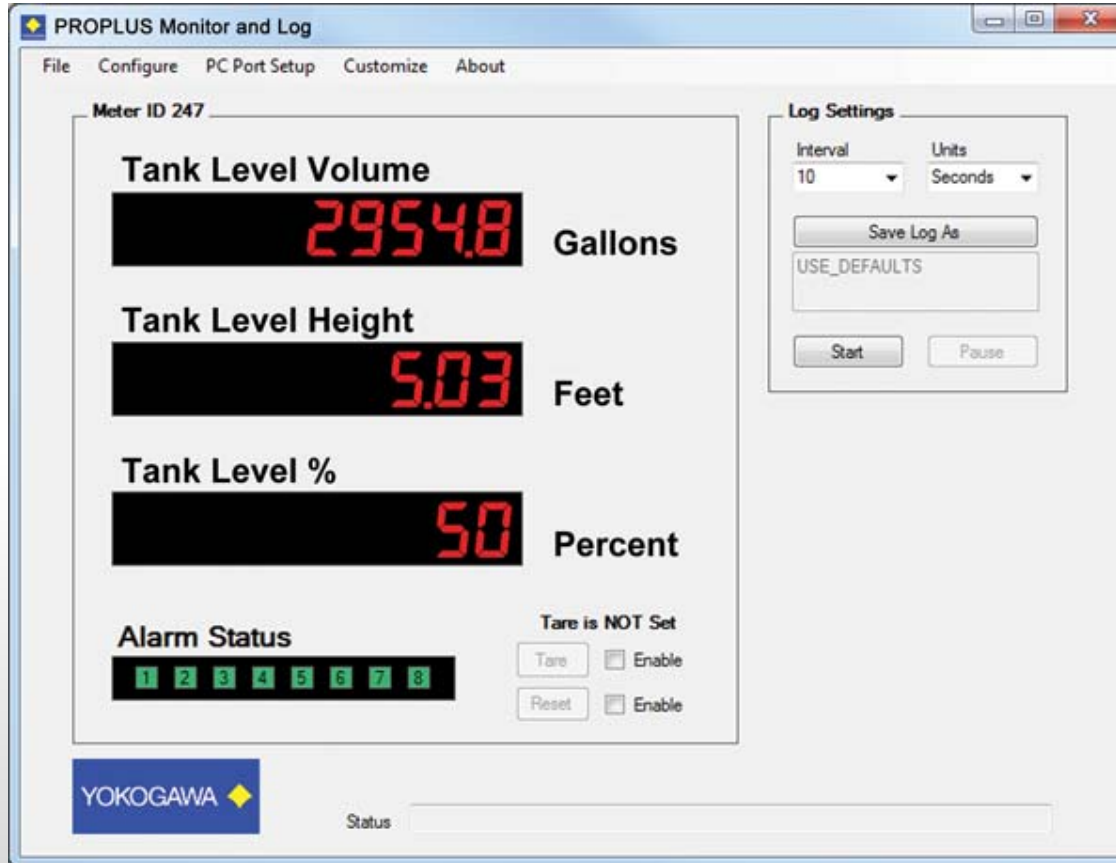
Communicate from a PC to

- ◆ Configure the Meter
- ◆ Monitor Present Trends
- ◆ Log to as Large of a File as Needed

Requires a YPPA8008 USB Serial Adapter

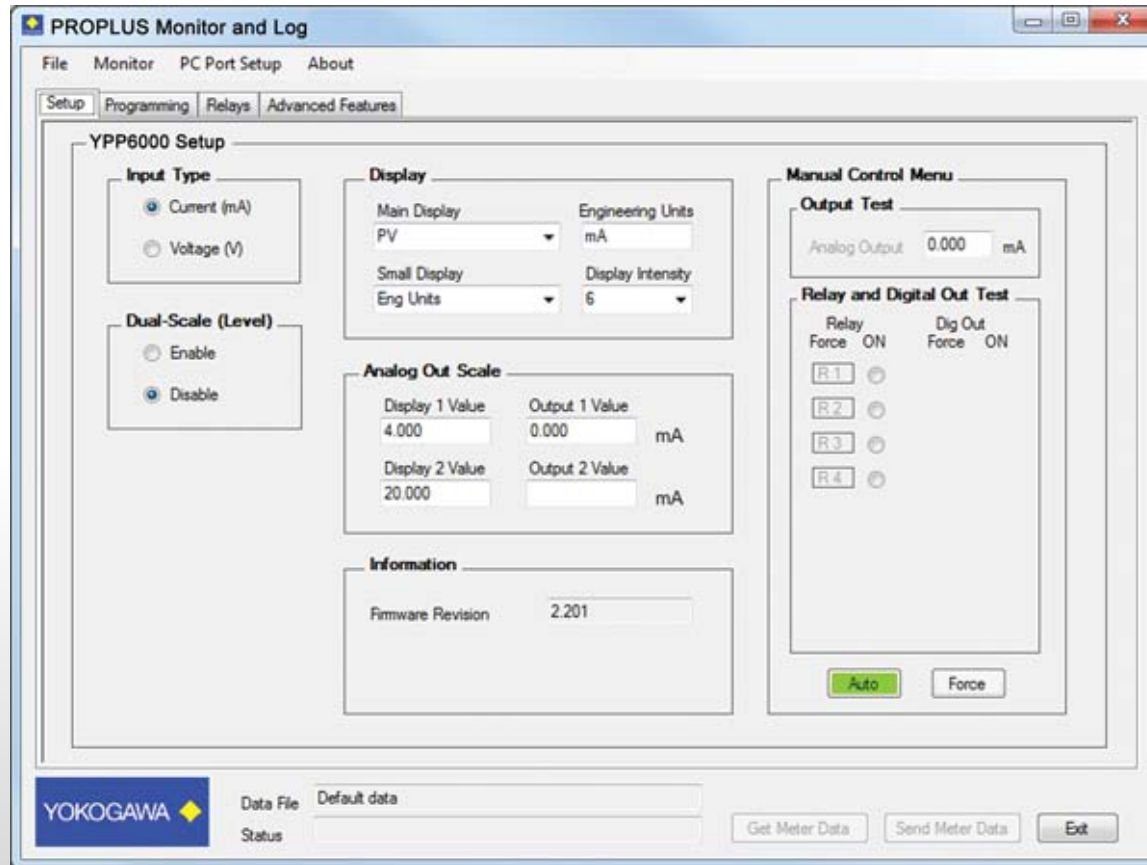


PROPLUS SOFTWARE



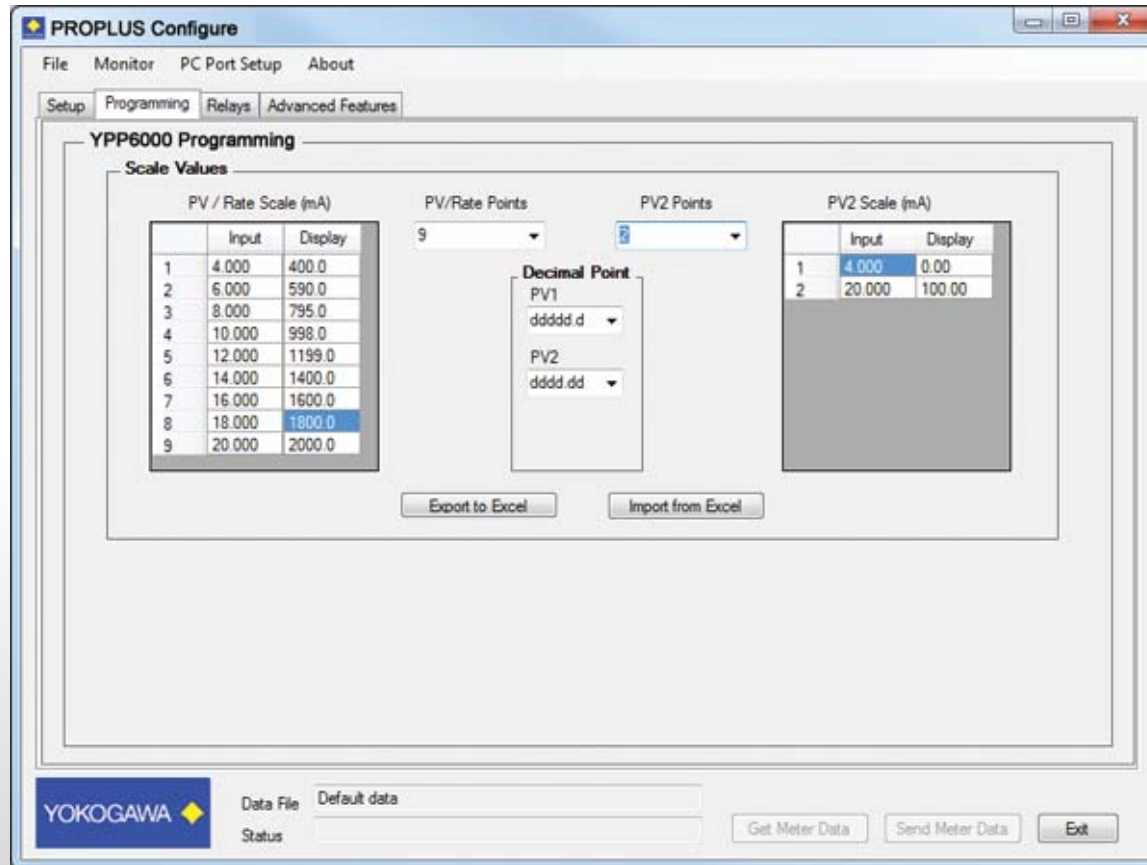
Monitor and Datalog Screen

PROPLUS SOFTWARE



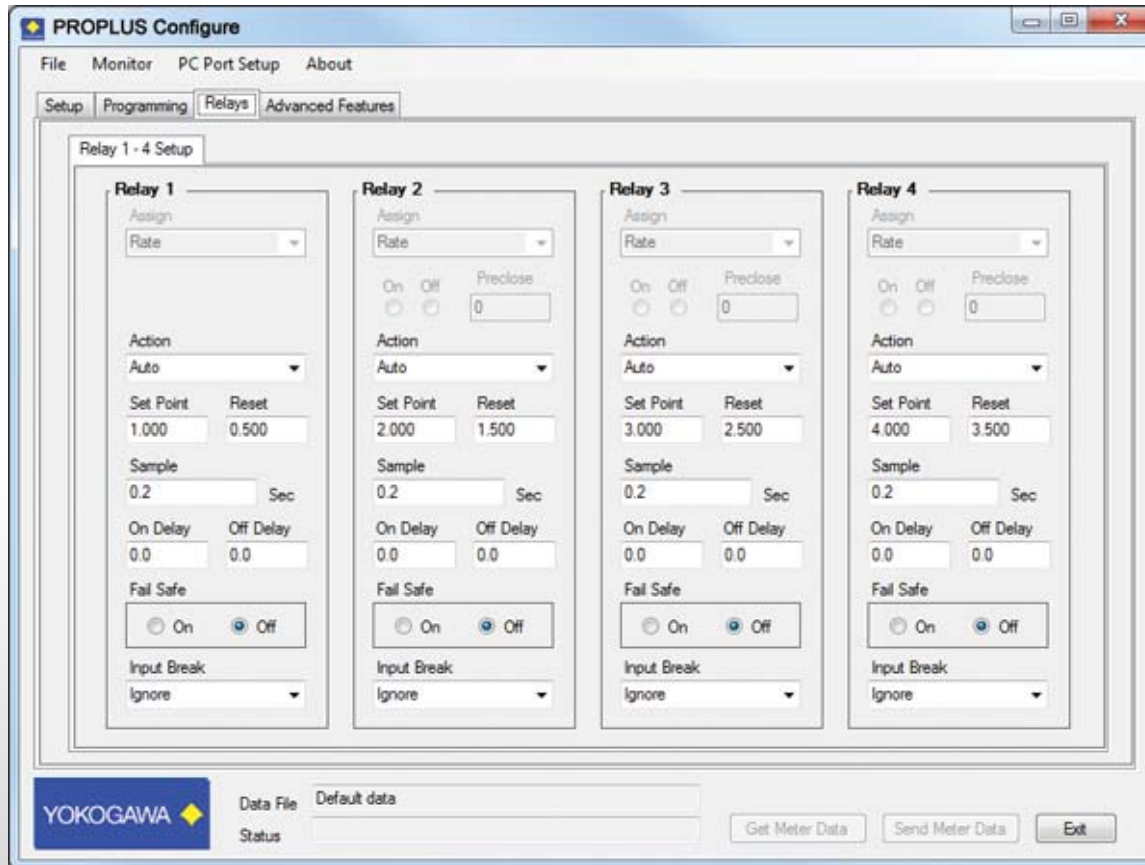
Setup Screen

PROPLUS SOFTWARE



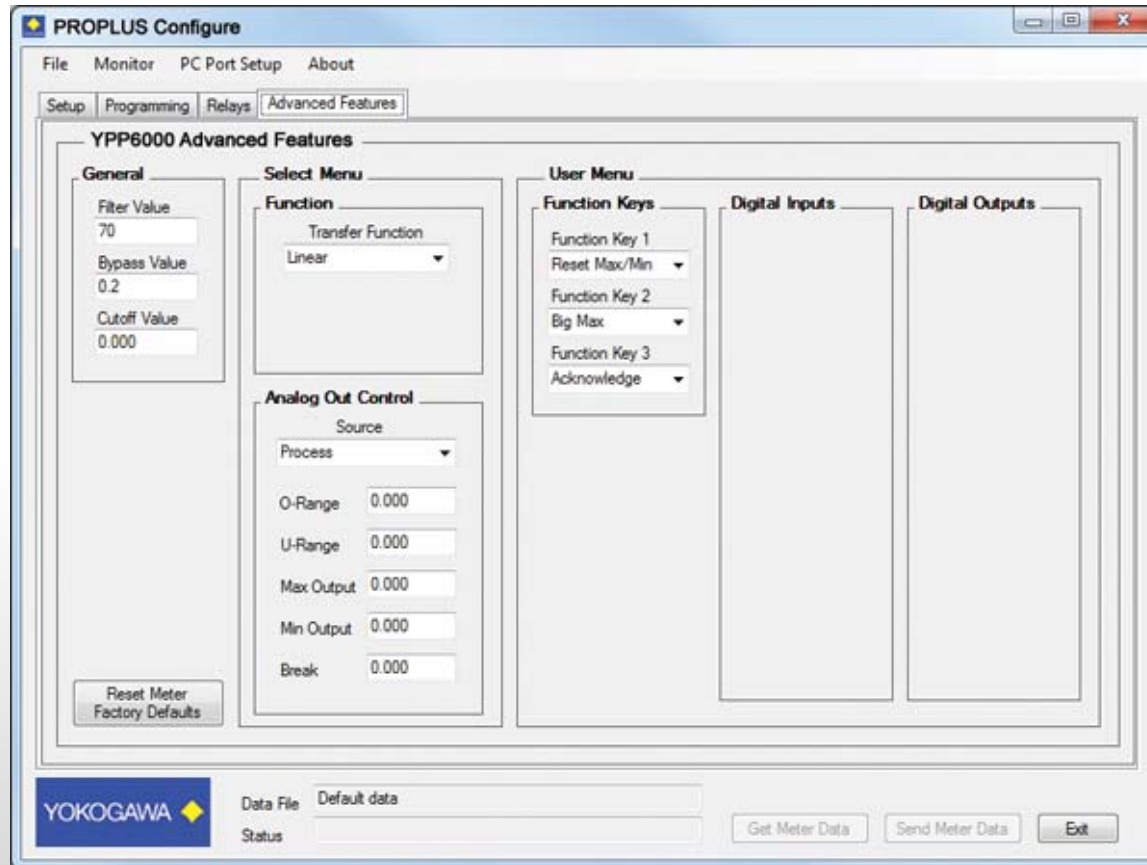
Linearization Utility Screen

PROPLUS SOFTWARE



Relays Screen

PROPLUS SOFTWARE



Advanced Features Screen

PROPLUS ACCESSORIES



YPPA1004

4-Relay
Expansion Module



YPPA1044

4 Digital I/O
Expansion Module



YPPA1232

RS-232
Serial Adapter



YPPA1485

RS-485
Serial Adapter



YPPA7485

RS-232 to RS422/485
Converter



YPPA8232

USB to RS-232
Converter



YPPA8485

USB to RS-422/485
Converter



YPPA8008

USB
Serial Adapter

PROPLUS EXPANSION MODULES



EXPANSION MODULES

- ◆ Expansion modules add functionality to any PROPLUS in the field and are easy-to-install.
- ◆ 4-relay expansion module has four 3 amp Form A (SPST) relays.
- ◆ The I/O module has four digital inputs and four digital outputs per module.
- ◆ Add up to two I/O modules.
- ◆ The menu items for these modules do not appear until the module is connected, simplifying the basic menu.
- ◆ External digital inputs can function similarly to the front panel function keys.

YPPA8008 USB SERIAL ADAPTER



- ◆ The YPPA8008 **PROPLUS** to USB Serial Adapter allows for direct connection of a **PROPLUS** meter to the USB port of a PC.
- ◆ Use it with **PROPLUS** Software to configure a meter.

USB SERIAL ADAPTER

PLASTIC NEMA 4X ENCLOSURES



YPPA2811

1 Meter Enclosure



YPPA2812

2 Meter Enclosure

PROPLUS DEMO

- ◆ Demonstrates both YPP6000 Process Meter and YPP6200 Analog Input Rate/Totalizer
- ◆ Easy to Carry and Demonstrate
- ◆ Connect your Transmitter or Flowmeter to Double the Productivity of your Sales Call
- ◆ Use with **PROPLUS** Software and a YPPA8008 USB Adapter

