



Rugged Sensors for Clear Object Detection

Q4X COD

Versatile. Durable. Easy-to-Use.

- Robust IP69K-rated **FDA-grade stainless steel** housing resists high-pressure, high-temperature washdown and chemical clean-in-place processes.
- **“Point, Teach and Go”** setup and operation with intuitive interface and angled, easy-to-read four-digit display
- No reflector needed
- Highly visible, very small, bright red laser spot for alignment





Q4X Laser Clear Object Detection Sensor

Superior Performance

Reliably identifies the position and reflectivity of the reference background.

Point, Teach and Go.



Ideal for leading edge detection, counting, presence/absence of:

Clear Objects

Glass bottles
Plastic bottles
Plastic containers/trays
Web/film
IV liquid bags
Pharmaceutical vials

Challenging Targets

Shiny, clear objects
Thin walled bottles
Tinted bottles
Low profile trays
Irregular shaped bottles/trays

Class 1 Laser



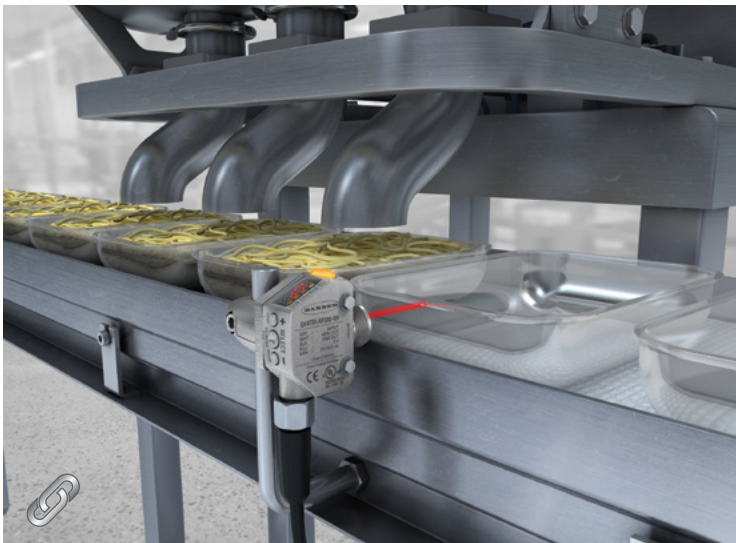
The Q4XCOD laser sensor provides greater precision and more reliable bottle detection than LED-based sensor solutions. When triggering shrink sleeve labels, increased line speeds and greater throughput are possible.

FDA Grade Stainless Steel



FDA-grade stainless steel housings are resistant to aggressive cleaning chemicals, making the Q4XCOD ideal for wet and hygienic processes in the food and pharmaceutical industries.

IP67, IP68, IP69K Environmental Rating



With an environmental rating of IP67, IP68 and IP69K, the Q4XCOD withstands high-pressure, high-temperature washdown often found in food, beverage, and pharmaceutical environments.

Best in Class Clear Object Detection



A single Q4XCOD sensor is capable of detecting a wide range of transparent and translucent objects without retooling the sensor, allowing faster line changeovers and keeping operator intervention to a minimum. No reflector is needed.

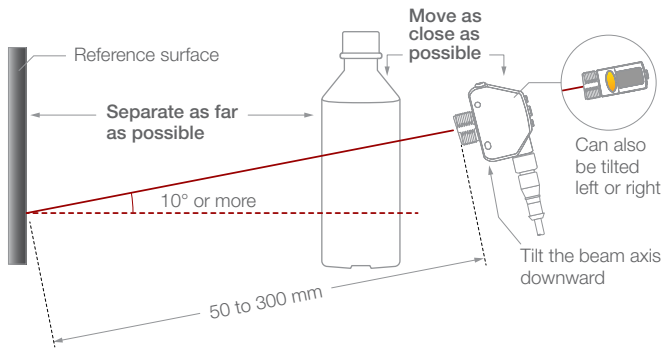


Q4X Laser Clear Object Detection Sensor

Family	Housing Style	Output	Mode	Range	Connector
Q4X	T	B	COD	300	Q8
	T = 18 mm Threaded Barrel	B = Bipolar	COD = Clear Object Detection	300 = 25-300 mm	Q8 = 5-pin Integral QD <i>QD models require mating cordset</i>

Order Now

Mounting Considerations



Sensing Range

25 to 300 mm

Laser Characteristics

Class 1 Laser:
655 nm visible red

Beam Spot Size

2.0 mm x 0.8 mm @ 300 mm

Response Speed

1.5 to 50 ms

Output

Bipolar (1PNP and 1 NPN)

Input

Active low

Operating Temperature

-10 to 50 °C

Environmental Rating

IP67, IP68, IP69K

Construction

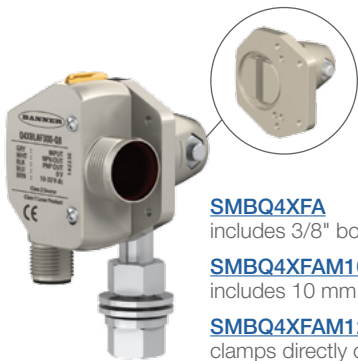
Housing: 316L stainless steel
Lens cover: PMMA acrylic
Indicator & Display Window: Polysulfone

Certifications



ECOLAB is a registered trademark of Ecolab USA Inc. All rights reserved.

Accessories



SMBQ4XFA

includes 3/8" bolt for mounting

SMBQ4XFAM10

includes 10 mm bolt for mounting

SMBQ4XFAM12

clamps directly onto industry standard bracket systems of 1/2" or 12 mm rods



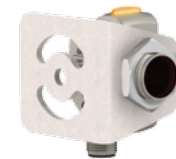
SMB18A

12-ga. stainless steel



SMBAMS18P

12-ga. cold-rolled steel



SMBAMS18RA

12-ga. cold-rolled steel



Delrin® Background Targets

FDA-grade material
reference target

BRT-Q4X-60X18

BRT-Q4X-60X50

IP67

5-Pin M12/ Euro-Style Cordsets

Straight connector models listed

For right-angle, add RA to the end of the model number (example, MQDC1-506RA)



MQDC1-506

2 m (6.5')

MQDC1-515

5 m (15')

MQDC1-530

9 m (30')

IP69K

5-Pin M12/ Euro-Style Washdown Cordset

Straight connector models only.

PVC cable jacket and 316 stainless coupling nut.



MQDC-WDSS-0506

2 m (6.5')

MQDC-WDSS-0515

5 m (15')

MQDC-WDSS-0530

9 m (30')



Q4X Laser Clear Object Detection Sensor

[Link to data sheets](#)

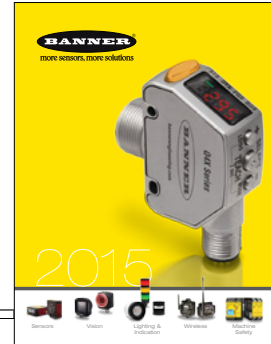
WORLD-BEAM® Q12 Series Sensors
 Miniature self-contained photoelectric sensors in universal housing

Standard Model

- Bright, visible red (640 nm) light source
- Standard models available with 4, 8, 12 or 16 m (15.8, 31 or 48 ft) cables or 3 or 4 wire
- 100 mm (4 in) cable with floating IEC threaded connector
- Solid state, bipolar output: one current sourcing (PNP) and one current sinking (NPN) provided on 4-wire models
- Single output, voltage state PNP or NPN standard on Q12 models
- Light Output: 0.1 or 0.2mW (Class II), depending on model
- Models available with PFA chemical-resistant jacket (200 psi maximum rated) for use in harsh environments (see Chemical-Resistant Models on page 1)
- Compact 5 mm (0.31 in) housing mounts almost anywhere
- Compatible accessories ready for applications with multiple sensors
- LED status indicators for Power On, Output Overload, Signal Received, and Marginal Signal
- Models with black housing are available

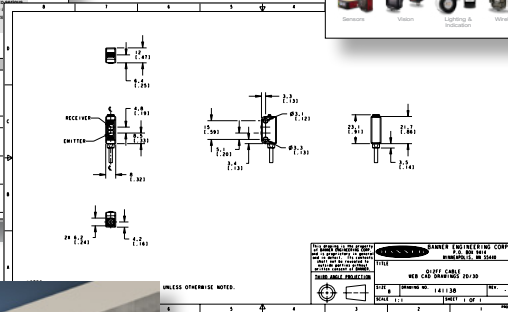
Chemical-Resistant Model

WARNING: Not To Be Used for Personnel Protection
 Never use this device as a sensing device for personnel protection. Doing so could lead to injury or death. This device does not include the self-clearing feature and is not for use in personnel safety applications. A sensor failure or malfunction can cause either an unwanted sensor output condition.

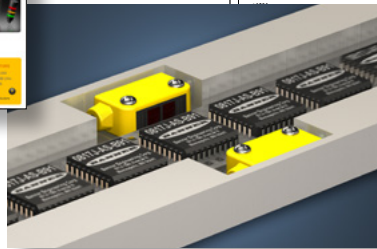


[Link to catalog](#)

[Link to the Banner website](#)



[Link to CAD files](#)



[Link to videos](#)



Talk with an app engineer. Get product specs. Order now.

1-888-373-6767 • bannerengineering.com

Minneapolis, MN

