

# GX20W

Wireless Paperless Recorder



# The GX20W Paperless Recorder comes integrated with

**Point 1**

Integrated functions cut down on network wiring

**Point 2**

Acquire and record signals simultaneously from remote

## Measure temperature inside rotary kilns with the YTMX580 Multi-Input Temperature Transmitter

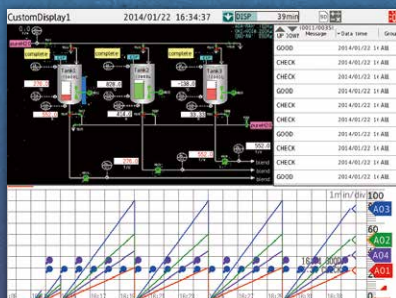
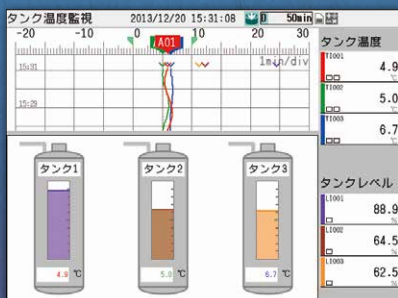
▶ The YTMX580 attaches to the side of the rotating kiln for wireless measurement



# GX20W

Create your own customized screens!

## Custom display (option)



## Power meter data input (option)

Data measured by WT series power meters can be sent as communication input.

### Supported Models

- WT310/WT310HC
- WT330
- WT500
- WT1800

\*Requires the Ethernet option.



You can arrange display objects such as trend, numeric, and bar graphs any way you like to create displays customized to your environment.

Requires [DAQStudio](#) custom display creation software.



# With a gateway function for field wireless applications

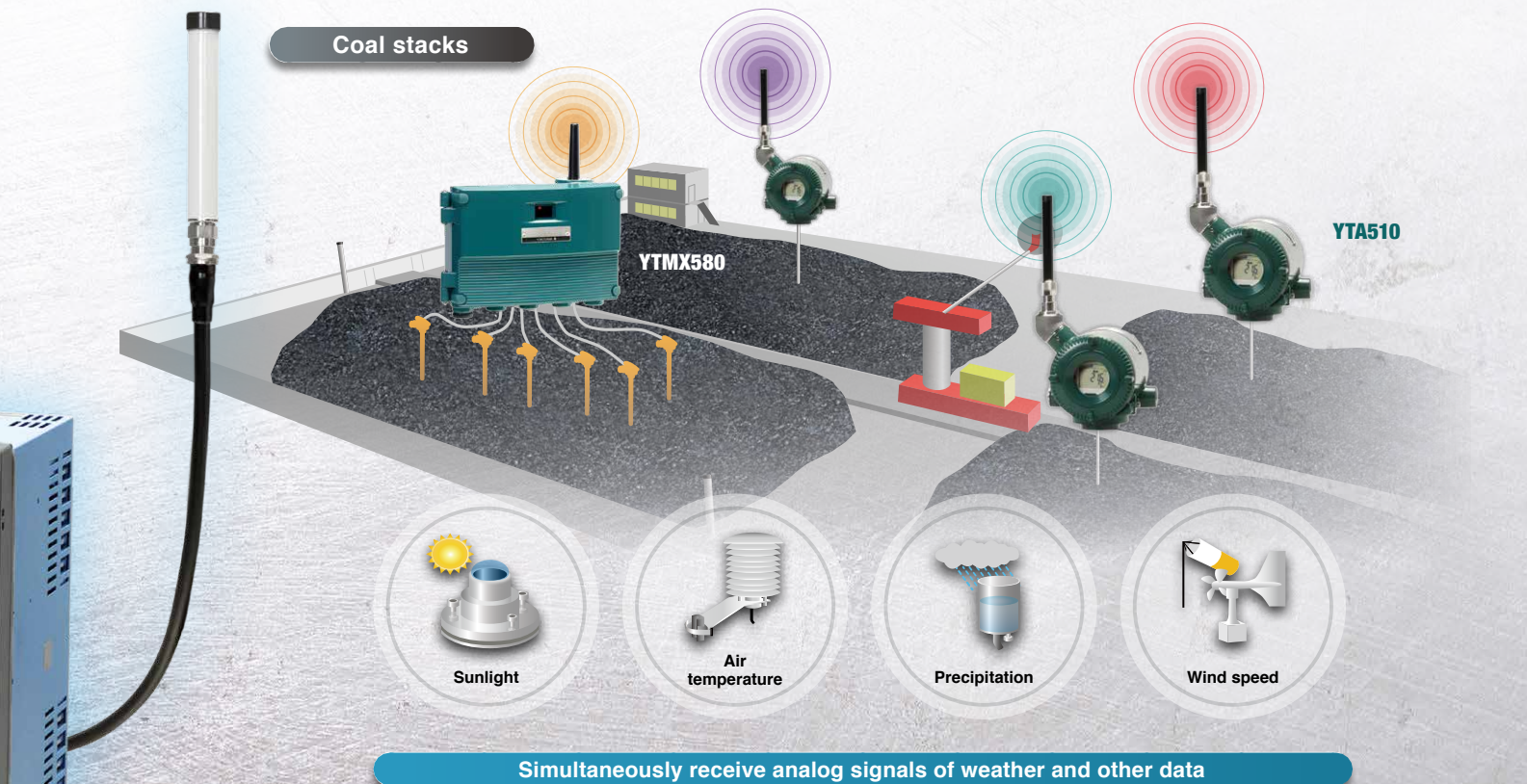
Panel input terminals

**Point 3**

Contact output available for alarm output, plus e-mail based alarm notification

## Monitor temperatures in coal stacks with the YTMX580 Multi-Input Transmitter and the YTA510

- ▶ Embed up to 8 thermocouples in the coal for temperature measurements
- ▶ Insert the YTA510 temperature transmitters directly into the coal for temperature measurements

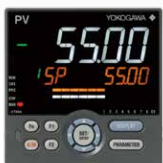


**Includes a variety of convenient networking functions!** FTP data transfer, email based alarm notification, etc.

Ethernet

### Modbus/TCP client function

Data I/O with instruments that support Modbus/TCP such as controllers and power monitors, and PLCs.



UTA series controllers



PR300 Power Monitor



PLC FA-M3V

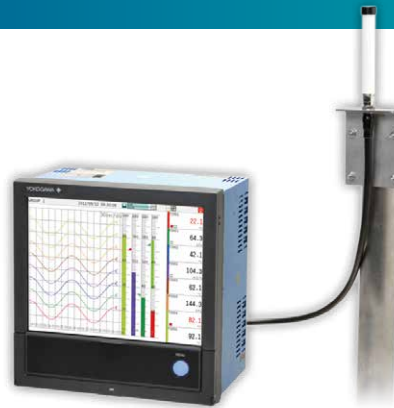
### Modbus/TCP server function

Enables delivery of data from DCS, SCADA, and other upstream systems.



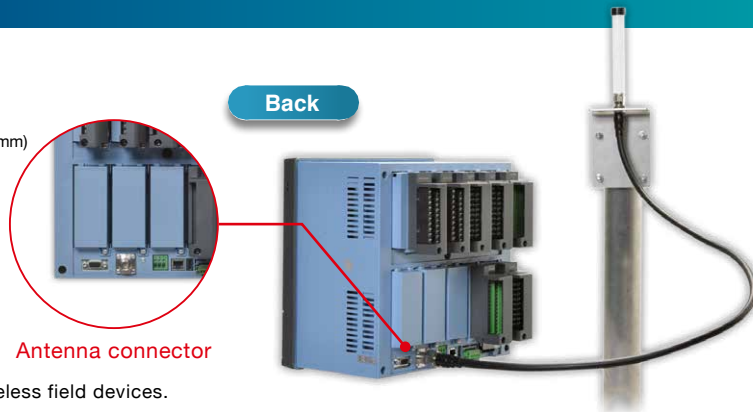
## Main features and specifications

- **Wireless field devices: supports up to 50 connections**  
Input up to 500 channels
- **Real time display from the touch panel (12.1-inch)**
- **Long duration recording/saving**  
Large internal memory: 1.2 GB  
External memory: SD card (supports 32 GB)
- **Expandable input/output modules**  
Up to 10 modules (AI/DI/DO)  
Analog input (100 ch)



## Wireless function extras

- **Remote antenna cable (sold separately)**  
Omni-directional antenna (+2 dBi)  
High frequency coaxial cable (sheath diameter: 11.1 mm)
  - Type N connector
  - 1 to 13 m (3 m + 10 m) with arrestor
  - With mounting bracket
- **Software (included on DVD)**  
Field wireless configurator  
Field wireless management tool



\* FieldMate (sold separately) required to configure wireless field devices.

For detailed specifications, see the following general specifications.

GX20W Paperless Recorder Wireless Model (GS 04L51B11-01EN)

URL: <http://www.yokogawa.com/ns/gx20w/>



SMARTDAC+, SMARTDACPLUS and Co-innovating tomorrow are registered trademarks of Yokogawa Electric Corporation.  
Microsoft and Windows are registered trademarks or trademarks of Microsoft Corporation in the United States and other countries.  
Other company names and product names appearing in this document are registered trademarks or trademarks of their respective holders.

### NOTICE



Before operating the product, read the user's manual thoroughly for proper and safe operation.

### YOKOGAWA ELECTRIC CORPORATION

Control Instruments Business Division  
E-mail: [ns@cs.jp.yokogawa.com](mailto:ns@cs.jp.yokogawa.com)

<http://www.yokogawa.com/>

### YOKOGAWA CORPORATION OF AMERICA

### YOKOGAWA EUROPE B.V.

### YOKOGAWA ENGINEERING ASIA PTE. LTD.

<http://www.yokogawa.com/us/>

<http://www.yokogawa.com/eu/>

<http://www.yokogawa.com/sg/>

Sign up for our free e-mail newsletter  
[www.yokogawa.com/ns/](http://www.yokogawa.com/ns/)

Subject to change without notice  
All Rights Reserved. Copyright © 2013, Yokogawa Electric Corporation

AZ-S-1E  
Printed in Japan, 803(AZ) [Ed:02/b]