

## PR10 Maintenance Guide

This document was created to help with the periodic maintenance and replacement of the pH electrode and o-rings within the PR10 retractable assembly.

1. Retract the fitting, when present through the ball valve

2. Close the valve



3. Unscrew the nut by using the handle (key)



4. Pull out the fitting



5. Push the tube back  $\pm 10$  cm to get more of a grip



6. Unscrew the sensor tip



7. Remove the sensor from the sensor tip



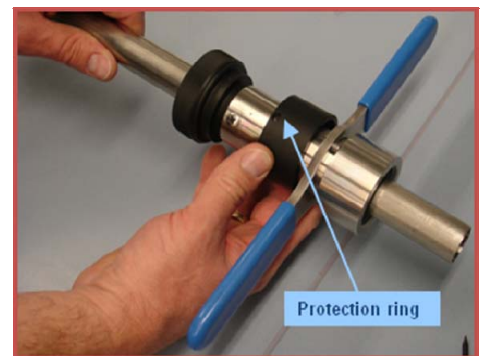
8. After removing the sensor the sealing O-rings are visible and need to be removed using the tool, K1525AF (purchased separately), because the O-rings are recessed.



9. Take out the fixing screws from the protection ring



10. Push back the protection ring



11. Take out the 2<sup>nd</sup> fixing screws



12. Turn the main fixing screw

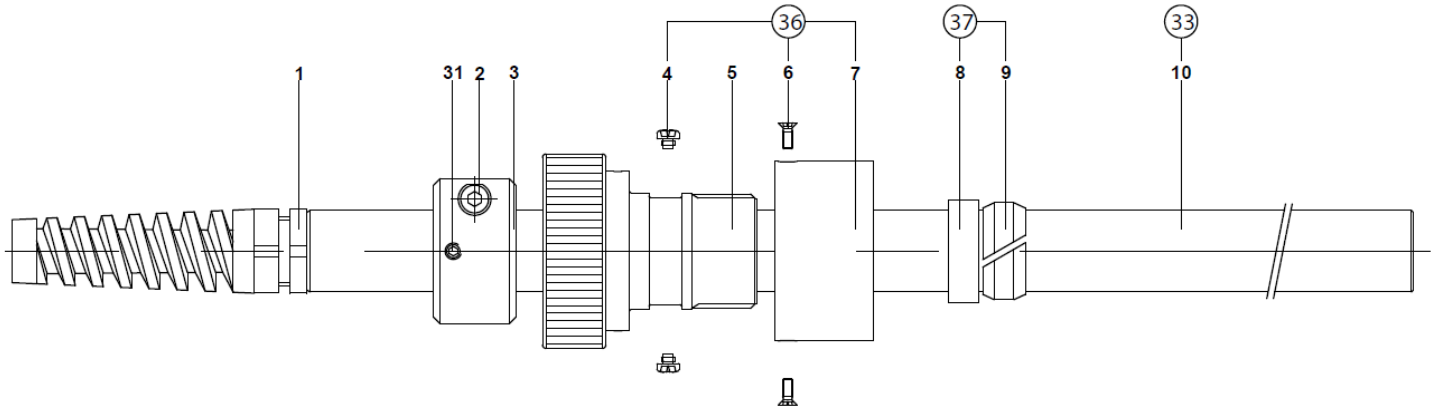


13. Replace the O-rings

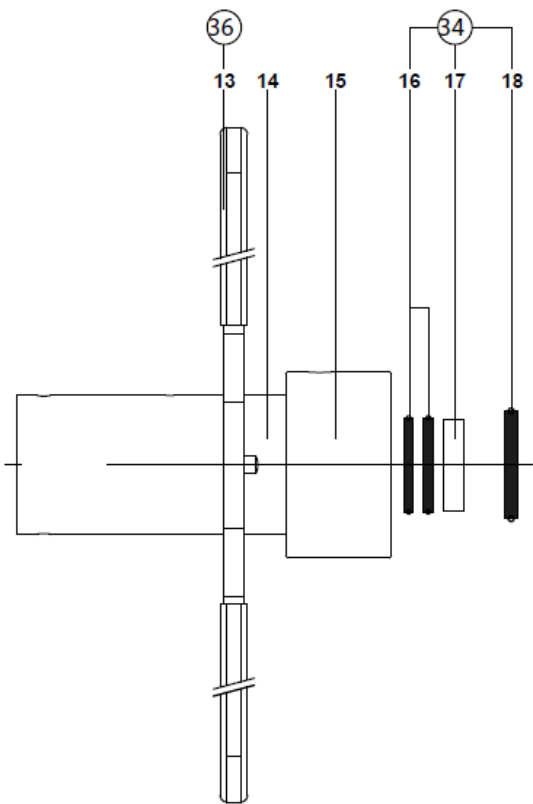


14. Replace the scraper  
with the special  
"hook" tool K1525AF  
(purchased  
separately).

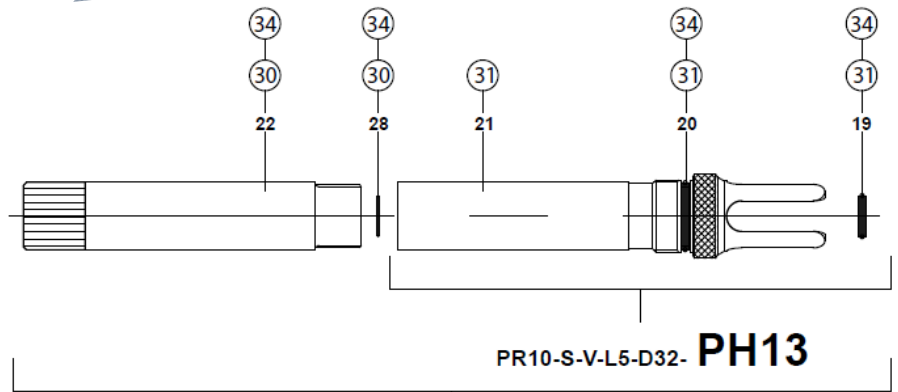




**PR10-S-V-L5-D... ..**



**PR10-S-V-L5-D32... ..**



**PR10-S-V-L5-D32-PH13**

**PR10-S-V-L5-D32-PH12**

	Description	Spare Part Number
1	Cable Gland	PR10-S-V-L5 (New assembly)
2	Screw Insertion stop	PR10-S-V-L5 (New assembly)
3	Insertion stop	PR10-S-V-L5 (New assembly)
4	Fixing screw (2 pieces)	K1525BC
5	Main fixing screw	PR10-S-V-L5 (New assembly)
6	Fixing screw (2 pieces)	K1525BC
7	Protection ring	K1525BC
8	Squeezing ring	K1525BD
9	Clamping ring	K1525BD
10	Outer tube	K1525AA
11	Earth Contact	K1525BC
12	Screw earth Contact	K1525BC
13	Key	K1525BC
14	Chamber DN32/ 1.25"	PR10-S-V-L5-D32-NNNN (New assembly)
15	Nut D32/ 1.25"	PR10-S-V-L5-D32-NNNN (New assembly)
16	O-Ring 20.07 x 2.26 (2 pieces)	K1525BA (D32), K1525BB (D50)
17	Scraper	K1525BA (D32), K1525BB (D50)
18	O-Ring 28.17 x 3.53	K1525BA (D32)
19	O-Ring 10.77 x 2.62	K1525AB (PG13.5 Sensor Cap), K1525BA (D32)
20	O-Ring 18.72 x 2.62	K1525AB (PG13.5 Sensor Cap), K1525BA (D32)
21	Sensor Holder PH13.5	K1525AB-This is what YCA Sensors Use (you also need to order K1525AG)
22	Adapter Y-Cap	K1525AG -This is what YCA Sensor Use )you will also need to order K1525AB)
23	O-Ring 20.35 x 1.78	K1525AP, K1523BA, K1525BB
24	Adapter M19 x 1.5	K1525AP
25	Nut DN50/ 2"	PR10-S-V-L5-D50-ISC4 (New assembly)
26	O-Ring 47.22 x 3.53	K1525BB
27	Chamber DN50/ 2"	PR10-S-V-L5-D50-ISC4 (New assembly)
28	O-Ring 12.0 x 1.0	K1525AG, K1525BA
29	Ring M3	K1525BC
30	O-Ring 15.6 x 1.78 (2 pieces)	K1525AP, K1525BA, K1525BB

O-ring Kit K1525AB for the PR10-S-V-L5-D32.....



Item 28 of Exploded View  
O-ring size 12.0 x 1.0 (QTY 1)

Item 20 of Exploded  
View  
O-ring size 18.72 x 2.62  
(QTY 1)

Item 19 of Exploded  
View  
O-ring size 10.77 x 2.62  
(QTY 1)

Item 30 of Exploded  
View  
O-ring size 15.6 x 1.78  
(QTY 2- one spare)

Item 16 of Exploded View  
O-ring size 25.07 x 2.62 (QTY 2)

Item 17 of  
Exploded View  
Spacer (QTY 1)

Item 23 of Exploded  
View  
O-ring size 20.35 x 1.78  
(QTY 1)

Item 18 of Exploded View  
O-ring size 28.17 x 3.53 (QTY 1)

\* Items 30 and 23 are ONLY used when a SC4A sensor is being used. (PR10-S-V-L5-D32-SC4A.....)

\* Items 28, 20 and 19 are ONLY used when a PH sensor is being used. (PR10-S-V-L5-D32-PH12.....)  
Also need to note that if a sensor with a PG13.5 connection is being used then item 28 is not used.  
(PR10-S-V-L5-D32-PH13.....)

O-ring Kit K1525BB for the PR10-S-V-L5-D50.....



Item 23 of Exploded View  
O-ring size 20.35 x 1.78  
(QTY 1)

Item 30 of Exploded View  
O-ring size 15.6 x 1.78  
(QTY 2- one spare)

Item 16 of Exploded View  
O-ring size 25.07 x 2.62 (QTY 2)

Item 17 of Exploded View  
Spacer (QTY 1)

Item 26 of Exploded View  
O-ring size 47.22 x 3.53 (QTY 1)