

GENERAL

FLUID	: Air or neutral gas, filtered, lubricated or not
PORTS	: M 5 - G 1/8 - G 1/4
ORIFICE Ø	: 2,5 - 4 - 6 mm
PRESSURE	: 0 to 8 bar (1,5 to 8 bar with differential return)
PILOT PRESSURE	: 1,5 to 8 bar
TEMPERATURE	: +5 °C, +50 °C
FLOW (Qv at 6 bar)	: see table below
FUNCTIONS	: 3/2 - 5/2 - 5/3
MOUNTING	: individual or on joinable subbases



CONSTRUCTION

Body in polyamide or light alloy, cover in acetal resin (POM)
Internal parts in stainless steel, light alloy and acetal resin (POM)
Sealings in nitrile (NBR)

SPECIFICATIONS

1 = Pressure	12 = Return
2,4 = Outlets	14 = Pilot
3,5 = Exhausts	

Functions	Symbols	Operators		Pipe size	Orifice size (mm)	Flow		catalogue number
		Pilot (14)	Return (12)			at 6 bar (l/min) ANR	coef. KV	
3/2		Air	Differential	G 1/8	4	400	5,7	52000376
		Air	Spring	G 1/8	4	400	5,7	52000330
5/2		Air	Differential	M5	2,5	175	2,5	51900077
		Air	Differential	G 1/8	4	600	8,5	52000077
		Air	Differential	G 1/4	6	1050	15	52100077
		Air	Air	M5	2,5	175	2,5	51900078
5/3		Air	Air	G 1/8	4	600	8,5	52000078
		Air	Air	G 1/4	6	1050	15	52100078
		Pressure held W 1 Air operated		G 1/8	4	600	8,5	52000079
		Pressure held W 1 Air operated		G 1/4	6	1050	15	52100079
		Pressure applied W 2 Air operated		G 1/8	4	600	8,5	52000142
		Pressure applied W 2 Air operated		G 1/4	6	1050	15	52100142
5/3		Pressure release W 3 Air operated		G 1/8	4	600	8,5	52000082
		Pressure release W 3 Air operated		G 1/4	6	1050	15	52100082
		Pressure release W 3 Air operated		G 1/8	4	600	8,5	52000082
Pressure release W 3 Air operated		G 1/4	6	1050	15	52100082		

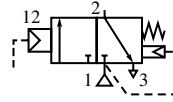
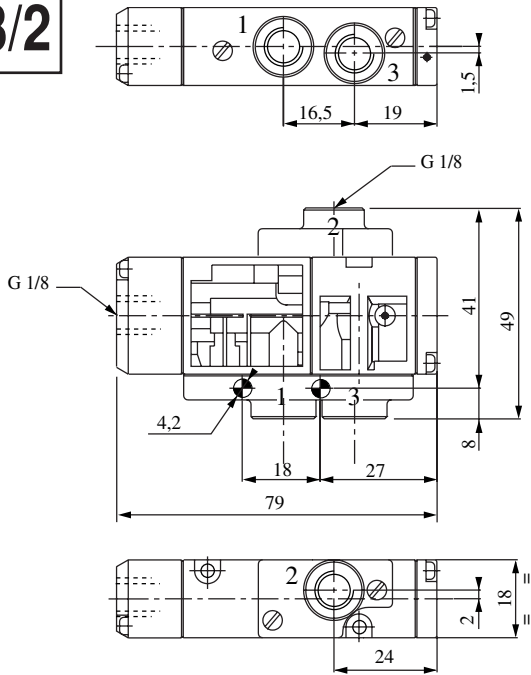
ACCESSORIES

• 520 Series: Flange for ports 2 - 4 with instant fittings for flexible tube, catalogue number **88135532**

SUBBASES : Joinable subbases, [check the online configurator on: www.asco.com](http://www.asco.com)

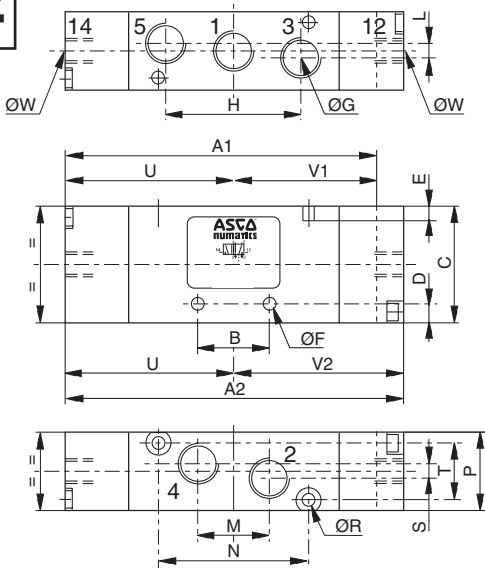
DIMENSIONS AND WEIGHTS

3/2

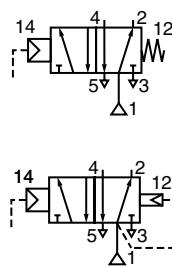


520 = 45 g

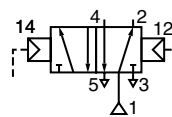
5/2



Series	B	C	D	E	ØF	ØG	H	L	M	N	P	ØR	S	T	U	ØW
5/2 519	11	26	4	4	3,3	M5	21,6	-	11	19	15	2,7	6	11	30,5	M5
5/2 520	15	27	6	3	3,3	G1/8	32,4	3	16,2	35	18	3,2	-	13	42,5	G1/8
5/2 521	22	31	6,5	4	4,3	G1/4	44	4	22	50	22	4,2	4	16	50	G1/8



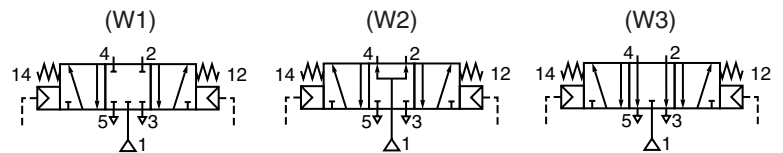
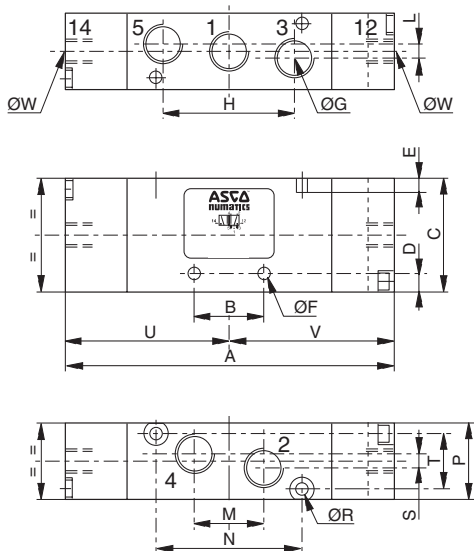
Series	A1	V1
5/2 519	-	-
5/2 520	85,3	42,8
5/2 521	-	-



Series	A1	V1
5/2 519	55,5	25
5/2 520	76	33,5
5/2 521	91,5	41,5

Series	Weight
519	50 g
520	65 g
521	110 g

5/3



Series	A	B	C	D	E	ØF	ØG	H	L	M	N	P	ØR	S	T	U	V	ØW
5/3 520	94	15	27	6	3	3,3	G1/8	32,4	3	16,2	35	18	3,2	-	13	42,5	51,5	G1/8
5/3 521	109	22	31	6,5	4	4,3	G1/4	44	4	22	50	22	4,2	4	16	50	59	G1/8

Series	Weight
520	75 g
521	120 g