

Drawings

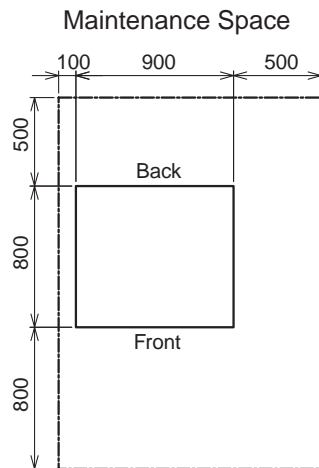
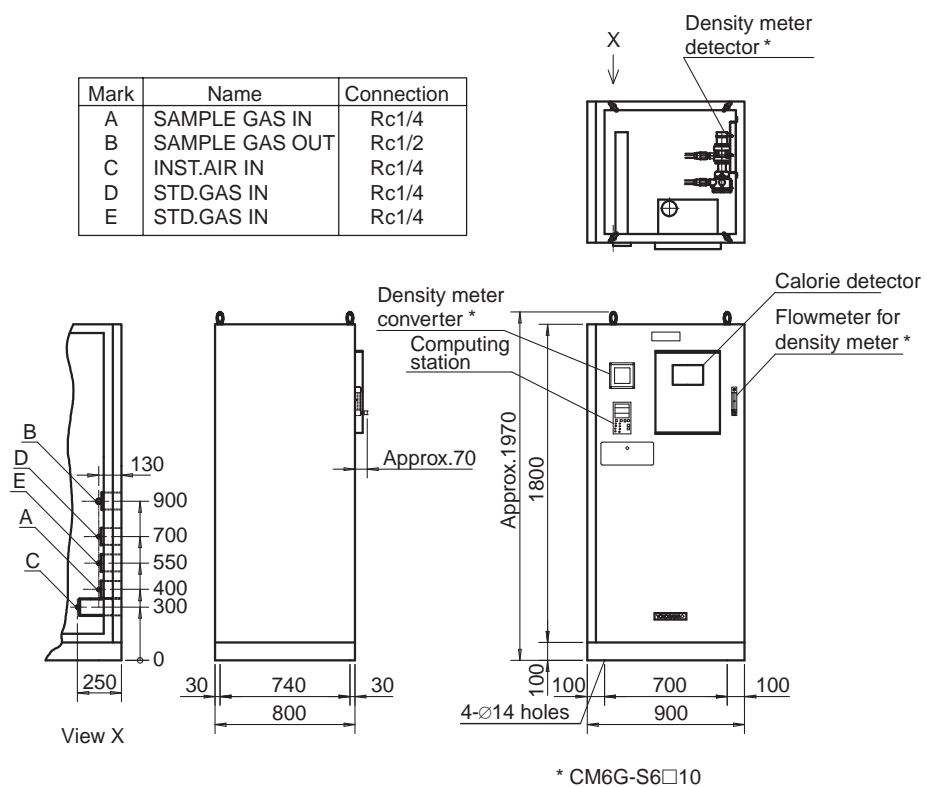
Model CM6G Gas Calorimeter

DIMENSIONS

1. Town Gas Application

CM6G-S6200, S6210, S6300, S6310, S6400, S6410

Unit: mm



Weight: Approx. 300kg

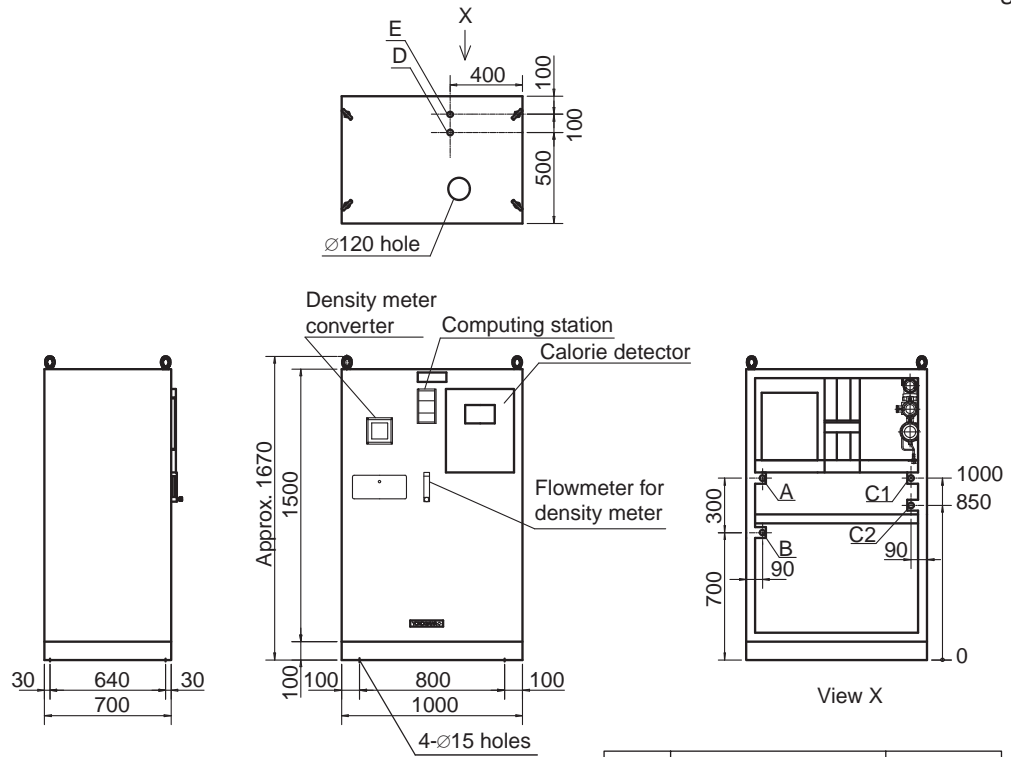
Dim-6210.eps

Unless otherwise specified, differences in the dimensions are specified as : General tolerance=(Criteria of tolerance class IT18 in JIS B0401)/2.

2. Town Gas Application (Quake-proof Type)

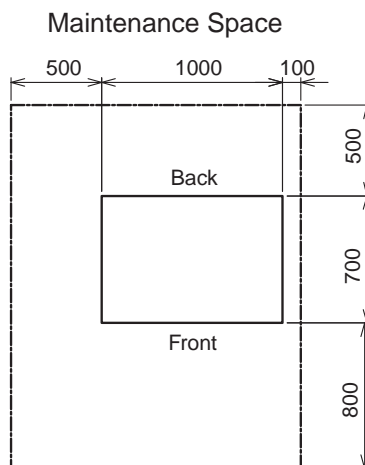
CM6G-S6110

Unit: mm



Mark	Name	Connection
A	SAMPLE GAS IN	Rc1/4
B	INST.AIR IN	Rc1/4
C1	STD.GAS IN (ZERO)	Rc1/4
C2	STD.GAS IN (SPAN)	Rc1/4
D	SAMPLE GAS VENT	Rc1/2
E	SAMPLE GAS VENT	Rc1/2

Wiring to switch box should be made through the bottom.



Weight: Approx. 350kg

Dim-6110.eps

Unless otherwise specified, differences in the dimensions are specified as : General tolerance=(Criteria of tolerance class IT18 in JIS B0401)/2.

SD 11R02A01-02E 2/3

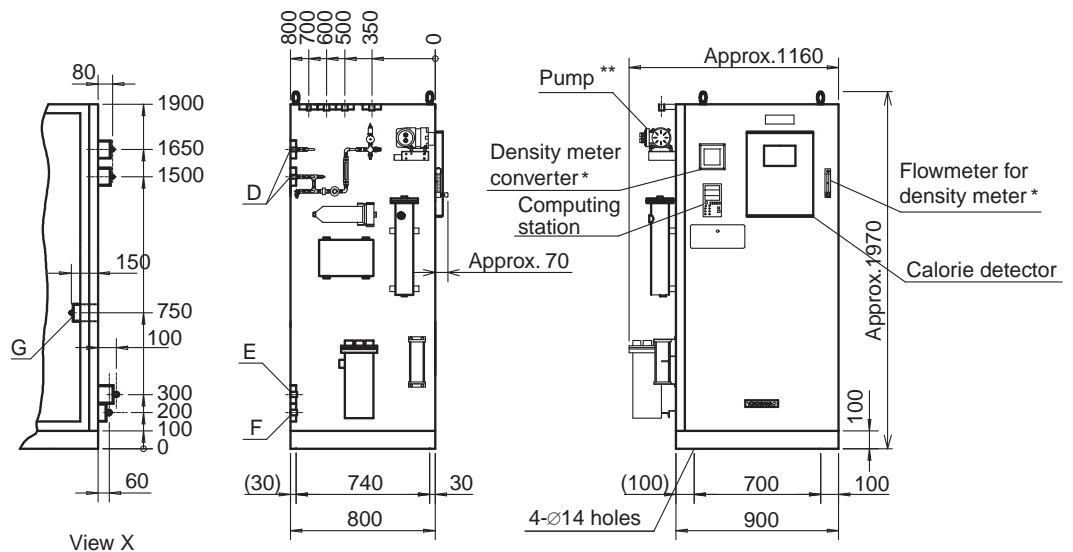
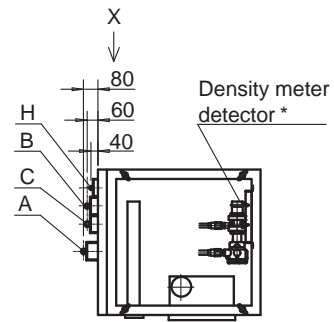
1st Edition: Mar. 1996 (YK)
2nd Edition: Feb. 2009 (YK)

3. Steel Mill Application

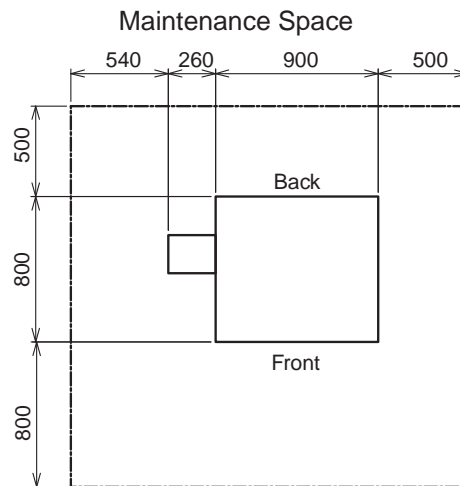
CM6G-S6500, S6510, S6600, S6610, S6700, S6710, S6800, S6810

Unit: mm

Mark	Name	Connection
A	SAMPLE GAS IN	Rc1/2
B	SAMPLE GAS OUT	Rc1/2
C	SAMPLE GAS OUT	Rc1/2
D	STD.GAS IN	Rc1/4
E	WATER IN	Rc1/2
F	DRAIN OUT	Rc1/2
G	INST.AIR IN	Rc1/4
H	SAMPLE GAS VENT	Rc1/4



* CM6G-S6□10
 ** CM6G-S67□0, CM6G-S68□0



Weight: Approx. 350kg

Dim-6810.eps

Unless otherwise specified, differences in the dimensions are specified as : General tolerance=(Criteria of tolerance class IT18 in JIS B0401)/2.