

Drawings

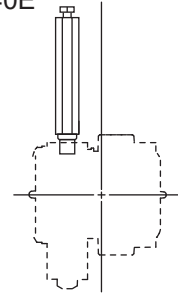
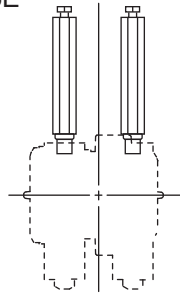
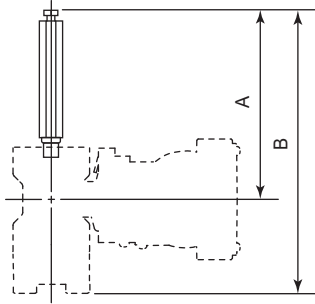
Option Code /U1 Long Vent Plug



SD 01C25B13-01E

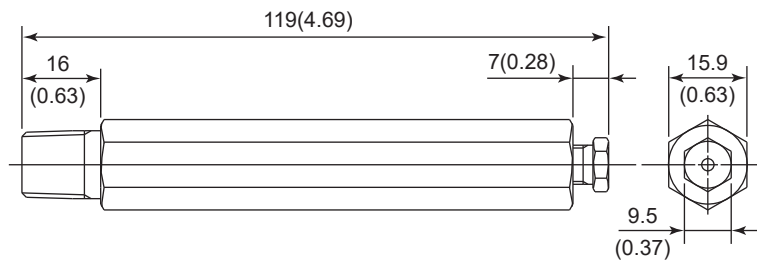
Unit: mm (approx. inch)

- EJX110A, EJX120A, EJX130A, EJX115A, EJX910A, and EJX930A
- EJA110E, EJA120E, EJA130E and EJA115E
- EJX310A, EJX430A, and EJX440A
- EJA310E, EJA430E, and EJA440E



Model	Dimensions A		Dimensions B	
	Option code /U1	Option code /U1, /K1, /K2, /K5, /K6, /K41, /K42, /K45, or /K46	Option code /U1	Option code /U1, /K1, /K2, /K5, /K6, /K41, /K42, /K45, or /K46
EJX110A, EJX310A, EJX430A, EJX910A, EJA110E, EJA310E, and EJA430E (Wetted Parts Material Code: S, except for Measurement Span Code F or option code /HD, /HD2)	149(5.87)	160(6.3)	223(8.78)	234(9.21)
EJX115A and EJA115E (except for Measurement Span Code F)	149(5.87)	160(6.3)	231(9.09)	242(9.53)
EJX440A and EJA440E	171(6.73)	182(7.17)	267(10.51)	278(10.94)
EJX110A, EJX430A, EJA110E, and EJA430E (Wetted Parts Material Code: H, M, T, A, B, D, Measurement Span Code F or option code /HD, /HD2)	154(6.06)	165(6.5)	233(9.17)	244(9.61)
EJX115A and EJA115E (Measurement Span Code F)				
EJX120A and EJA120E				
EJX130A, EJX930A, and EJA130E	176(6.93)	187(7.36)	277(10.91)	288(11.34)

• Long vent plug



• Long vent plug for oil-prohibited use (when combined with Option code K1, K2, K5, K6, K41, K42, K45, or K46)

