

Foundation Fieldbus /EE Option



FieldMate™

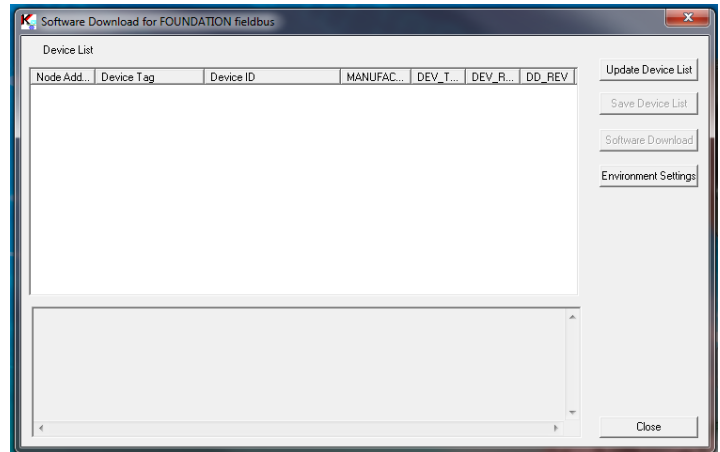


Figure 1: Foundation Fieldbus FieldMate Upgrade Tool

Introduction

The Fieldbus Foundation has set-up a method to allow for Foundation Fieldbus transmitters to download future enhancements to the protocol (Foundation Fieldbus Specification FF-883). The /EE option meets these parameters.

Typical use of this function is to add new features such as function blocks and diagnostics.

Applicable Models

- > **EJA-E Series:** All models with Foundation Fieldbus Protocol
EJA110E-FMS4G-912NN/FF1/EE
- > **EJX-A Series:** All models with Foundation Fieldbus Protocol
EJX110A-FMS4G-912NN/FF1/EE

FieldMate

Yokogawa's FieldMate communication software offers a tool to make the upgrade easy. In the FieldMate folder on your computer, there is a subfolder marked 'Tools'. In the tools folder there is a program named "Software Download for Foundation fieldbus".

See **Figure 1**.

With FieldMate connected to the bus, the program will display all the devices on the bus. The current node address, Device ID, and revisions of the drivers will be displayed. Those devices needing an update can be selected along with the upgrade file. Once selected, the program will update the transmitter.

