

# Accessories

## Mounting Kit

### UNO-2000 Series VESA Mounting Kit UNO-2000G-VMKAE

#### Features

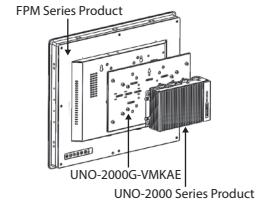
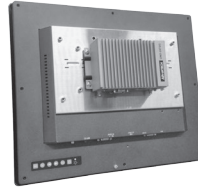
- Dimensions: 270 x 162 x 11 mm (W x H x D)  
(Only extension kit)
- Supports VESA 75 and 100 monitor

#### Supported Models

- UNO: All UNO-2000 series
- FPM : All FPM 12", 15", 17", 19" models

#### Ordering Information

- UNO-2000G-VMKAE



### UNO-2000 Series Din-Rail Mounting Kit UNO-2000G-DMKAE

#### Features

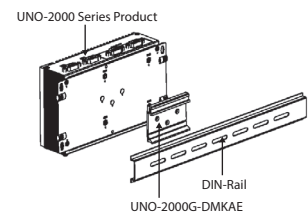
- Dimensions: 66 x 48.5 x 9 mm (W x H x D)

#### Supported Models

- UNO-2272G
- UNO-2362G
- UNO-2483G/2473G
- UNO-2483P

#### Ordering Information

- UNO-2000G-DMKAE



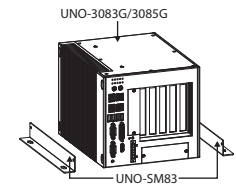
### UNO-3000 Series Stand Mounting Kit UNO-SM83

#### Supported Models

- UNO-3083G
- UNO-3085G

#### Ordering Information

- UNO-SM-83



### UNO-3000 Wall Mounting Kit

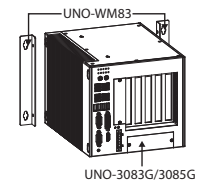
#### UNO-WM83

#### Supported Models

- UNO-3083G
- UNO-3085G

#### Ordering Information

- UNO-WM83



## Power Adapter/ Power Cord

	Industrial Grade			Commercial Grade	
	Part Number	Description		Part Number	Description
Power Adapter	1757002321	63WC to DC UNO series power adapter		PWR-249-AE	65W AC to DC power adapter
	<b>Features</b>			PWR-244-AE	96W AC to DC power adapter
	<ul style="list-style-type: none"> <li>▪ Input voltage: 90 ~ 264 V<sub>AC</sub>, 47 ~ 63 Hz</li> <li>▪ Output Voltage: 24 V<sub>DC</sub></li> <li>▪ Operating Temperature: -20 ~ 70°C</li> </ul>			1757002161	150W AC to DC power adapter
				<b>Features</b>	
				<ul style="list-style-type: none"> <li>▪ Input voltage: 100 ~ 240 V<sub>AC</sub>, 50 ~ 60 Hz</li> <li>▪ Output Voltage: 19 V<sub>DC</sub></li> <li>▪ Operating Temperature: 0 ~ 40°C</li> </ul>	
Power Cable	1702002600	Power Cable US Plug 1.8 M		1700001524	Power cable 3-pin US type 1.8 M
	1702002605	Power Cable EU Plug 1.8 M		170203183C	Power cable 3-pin EU type 1.8 M
	1702031801	Power cable UK Plug 1.8 M		170203180A	Power cable 3-pin UK type 1.8 M
	1700000596	Power Cable China/Australia Plug 1.8 M		-	-