

General Specifications

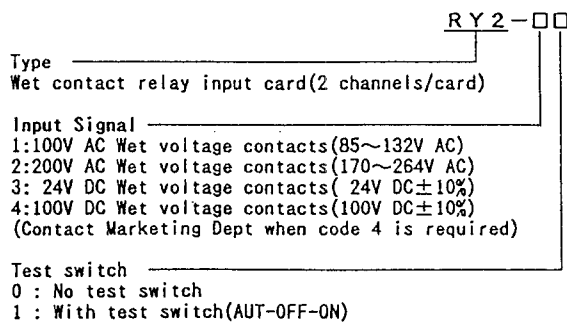
RY2 Wet Contact Relay Input Card

JUXTA

This unit receives wet contact signal from the field and outputs 2 contact signals (1 for use of DCS status card input and the other is re-transmit contact signal) isolated electrically from the field. One unit stores 2 channels.

- Output contact consists of 2 contacts ; 1 for DCS contact and the other for re-transmit contact (transfer contact) of current capacity 1A.
- The circuits between wet contact input signal and output signal is isolated electrically isolated by means of photo-isolator.
- Furnished with test switch convenient for debugging of DCS or checking operation and LED for status display.

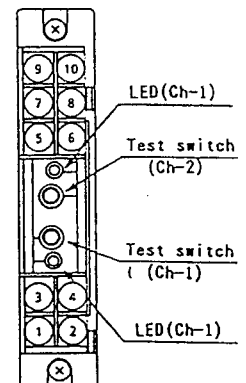
Device Specifications	
Structure	Nest storing type, connector connection structure card type, front by terminal and rear by connector. Terminal cover furnished.
Isolation	Between input~Output-1~Output-2~alarm terminal~power supply (Isolation by photo isolator between input and relay circuit)
Power fuse	0.5A alarm fuse installed at power lines for relay
Alarm	Output of dry contactis generated from alarm terminals of nest when power fuse is OFF.
Test switch	AUT : Output contact ON/OFF through external contact input OFF : Output contact compulsorily OFF in case of a-contact. ON : Output contact compulsorily ON in case of a-contact.
LED indication	Light on (green) when relay magnetized
I/O Specifications	
Input signal	Wet voltage contact
Output signal	Relay contact, 2 points (Output-1 : DCS output Output-2 : Re-transmit signal output)
Contact rating	Output-1 : 30V DC 0.2A (both resistance and inductance loads) Output-2 : Resistance load : 125V AC 0.4A 30V DC 1A Inductance load : 125V AC 0.2A 30V DC 0.5A Max.working voltage : 250V AC/125V DC For maximum relay life with inductive load, external protection is required for relay protection.
Standard Performance	
Insulation resistance	100MΩ(500V DC) between input~Output-1~Output-2~alarm contact output
Voltage withstand	1500V AC/1 minute between input~output-2~output-1,power supply or alarm contacts 500V AC/ 1 minute between output-1~alarm contact~power supply
Ambient temperature & humidity	Normal operating condition : 0~50C, 5~90% RH Operating limit : -10~60C, 5~95%RH Storing condition : -40~70C, 5~95%RH (no condensation)
Power supply voltage	24V DC±10% (ripple content below 5% p-p)
Current dissipation	24V DC 50mA
Mounting, Shape & Accessories	
Mounting method	Store in exclusive nest (RYH or RYV)
Connection method	Input : M3.5 screw terminal connection Output-1 (DCS output) : Connector connection Output-2 (re-transmit output) : M3.5 screw terminal connection Alarm terminal : Connector connection Power supply : Connector connection
Material of terminal screw	Nickel plated on iron (fastening torque below 8kgf.cm)
External dimension	108(H) x 21.4(W) x 129.6 (D) mm
Mass	About 150g
Accessories	Tag number label 1



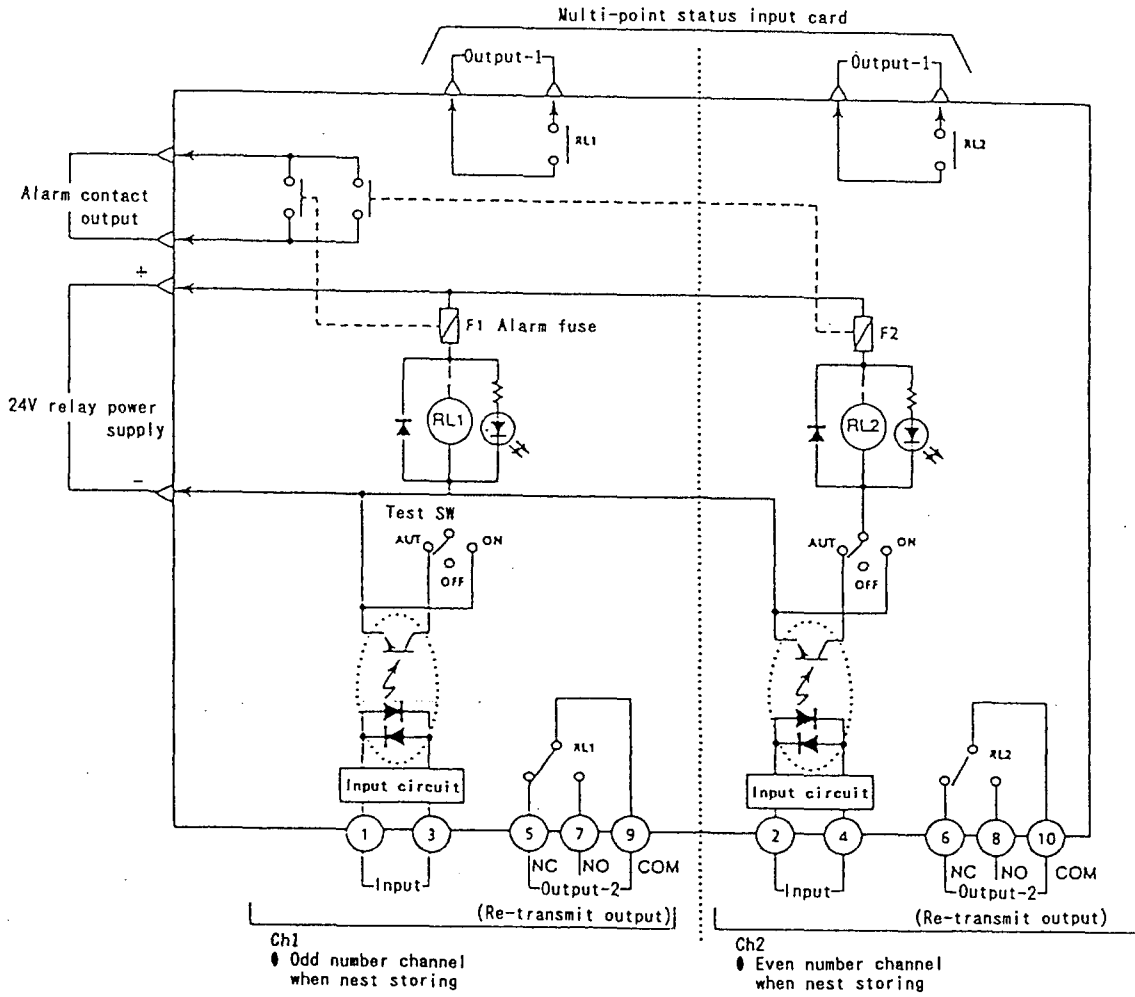
ORDERING INFORMATION
(Example) Type Code : RY2-11

Terminal Arrangement

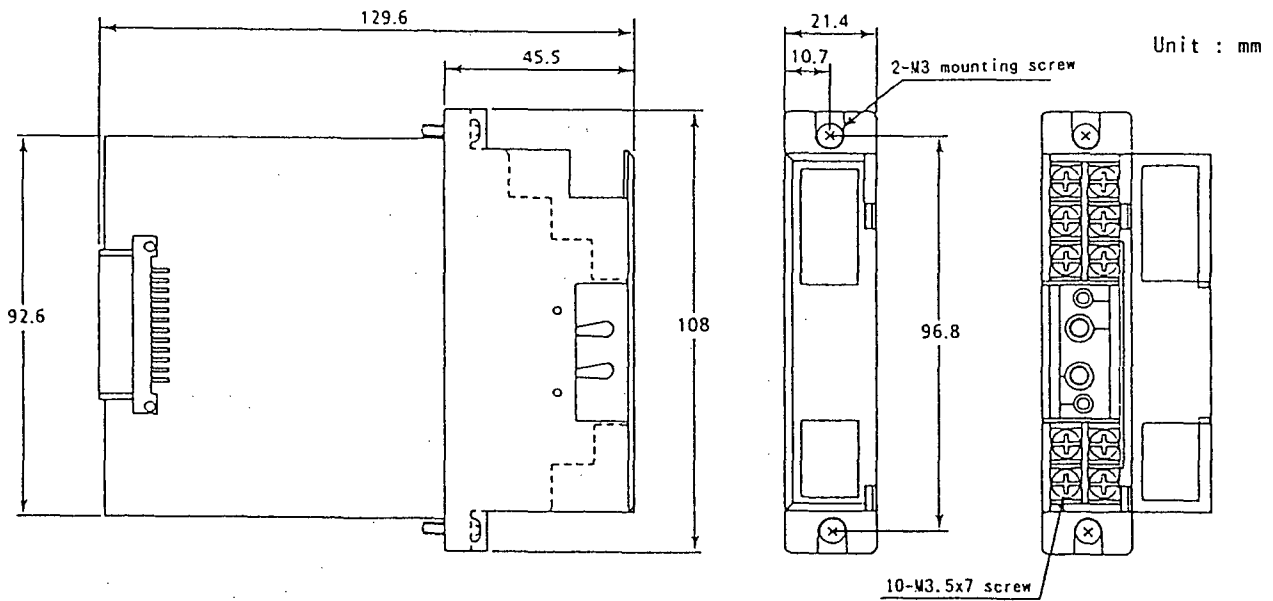
	Terminal No.	Signal
C H 1	1	Contact input (-) (Field side)
	3	Contact input (+) (Field side)
	5	b-contact output
	7	a-contact output
	9	Common
C H 2	2	Contact input (-) (Field side)
	4	Contact input (+) (Field side)
	6	b-contact output
	8	a-contact output
	10	Common



Block Diagram



External Dimension



Subject to change without notice for grade up quality and performance