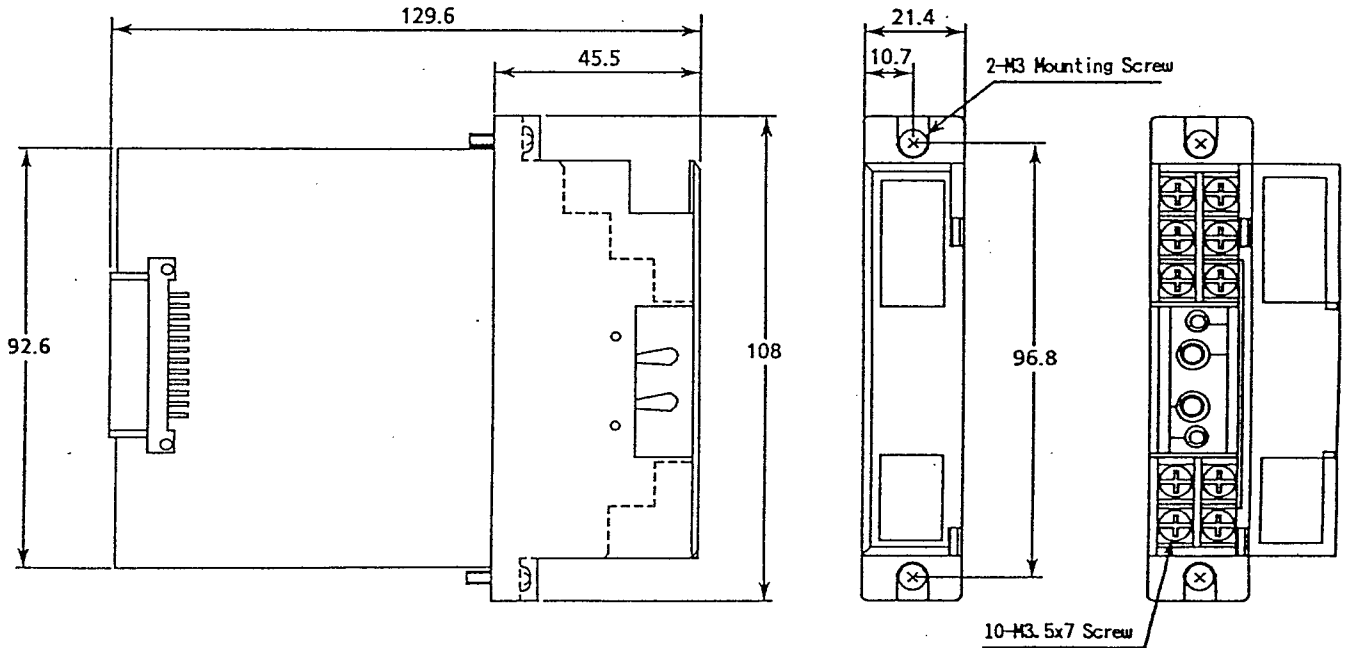
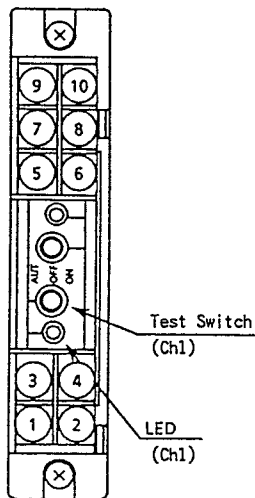


External Dimension

Unit : mm



Terminal Arrangement



	Terminal No.	Signal	
		RYO-1□	RYO-2□
C H 1	1	Common (non-voltage)	a contact N (-) (w/voltage)
	3	a or b contact (non-voltage)	a contact L (+) (w/voltage)
	5	b contact output	
	7	a contact output	
	9	Common	
C H 2	2	Common (non-voltage)	a contact N (-) (w/voltage)
	4	a or b contact (non-voltage)	a contact L (+) (w/voltage)
	6	b contact output	
	8	a contact output	
	10	Common	