

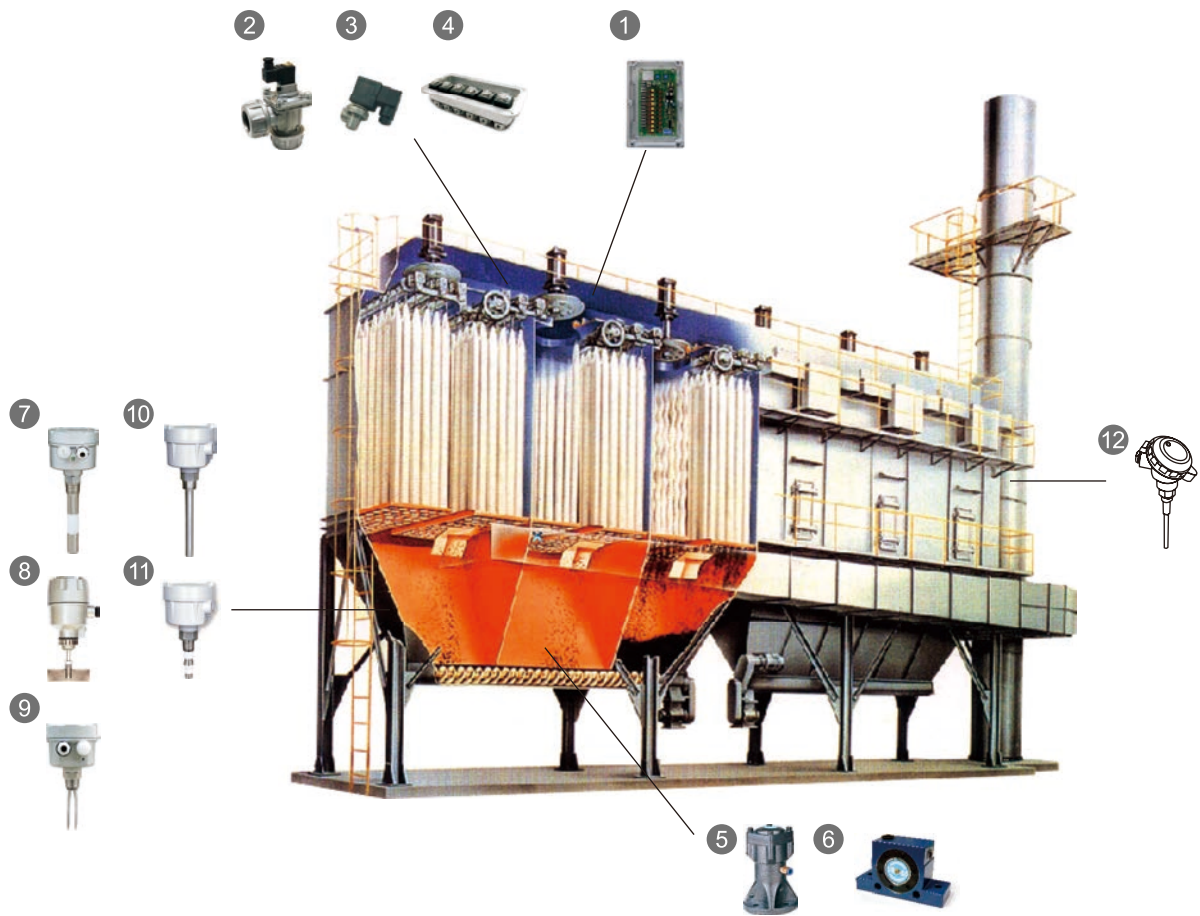


www.fine-tek.com

Valve and Controller for Dust Collector System



Innovation · Quality · Sharing



1 Controller For Dust Collector System



2 Diaphragm Valve



3 Remote Solenoid Pilot



4 Remote Solenoid Enclosure



5 Air Hammer



6 Pneumatic Vibrator



7 Capacitance Level Switch



8 Rotary Paddle Level Switch



9 Tuning Fork Level Switch



10 Vibrating Probe Level Switch



11 RF Capacitance admittance Level Switch



12 Snifter dust monitor

PRODUCT INFORMATION

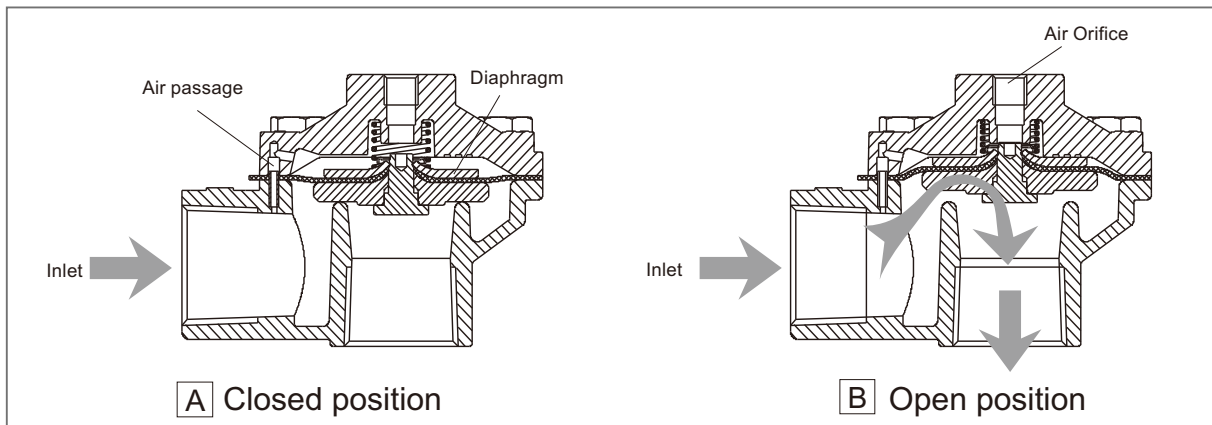
WORKING PRINCIPLE

The diaphragm valves are used specifically in the dust collector system. The valve consists of 2 air chambers divided by a piece of diaphragm. The 2 chambers are connected through an air passage (air passage's diameter is smaller than the orifice of the pilot valve). When the orifice opens, the air in the upper chamber is exhausted much faster than the speed of air that enters through the air passage. The air pressure of the upper chamber drops significantly, the higher pressure of the lower chamber pushes the diaphragm up and opens a bigger passage for air to enter into the bottom chamber. This sudden burst of air is used to inflate the fabric filter so as to shake off all the dust clinging on the bag filter. When the orifice closes, the pressure in both chambers equalizes and the diaphragm returns to its original position via the force of the coiled spring.

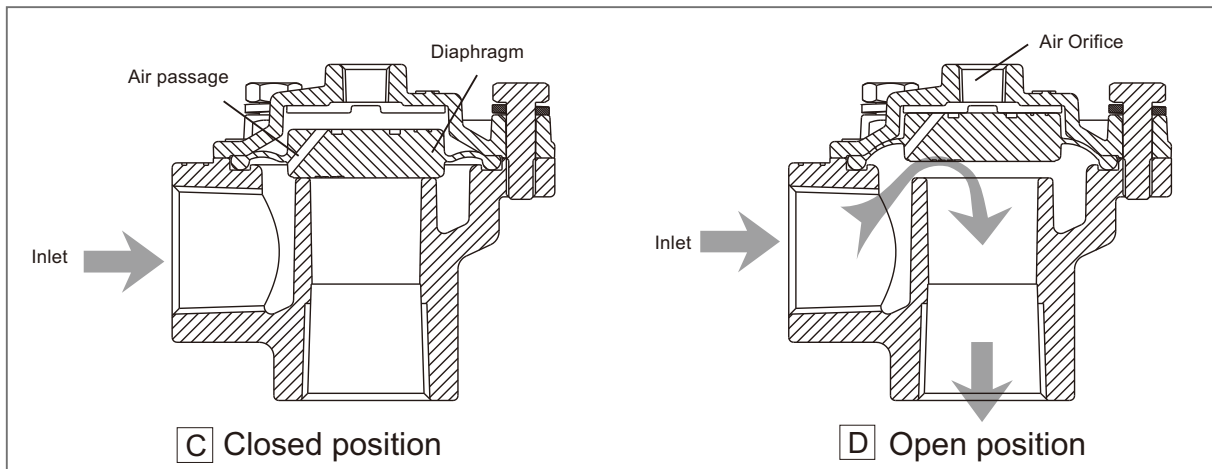
FEATURES

- Fast response, large flow volume, effective cleaning action on fabric filter
- Low air consumption
- Compatible with programmable sequential controller
- Ease of adjustment in jet pulse timing and duration

BRD



BDV



DIAPHRAGM VALVES WITH FEMALE THREADS



DESCRIPTION

Fast response, large flow volume, effective cleaning action on fabric filter.
 Low air consumption.
 Compatible with programmable sequential controller.
 Ease of adjustment in jet pulse timing and duration.

APPLICATION

Pulse cleaning and filtering system in dust collectors, also suitable for filter bags, filter barrels, flat bags, ceramic tubes and filter bags for metal fiber.

ORDER INFORMATION

10 11 12 **BDV 1 0 0 0 0 - A** 18 **A 2 7 MH** 18

10 Control method and wiring _____

- A: Integrated type; Solenoid valve with lead wire
- B: Integrated type; Solenoid valve with DIN connector
- C: Remote type

11 12 Process connection _____

- A7: 3/4"
- A8: 1"
- B1: 1-1/2"

18 Power supply for solenoid valve _____

- A: 110Vac
- B: 220Vac
- C: 24Vdc
- 0: Without solenoid valve

*Please refer to page 39 For model and order code comparison table



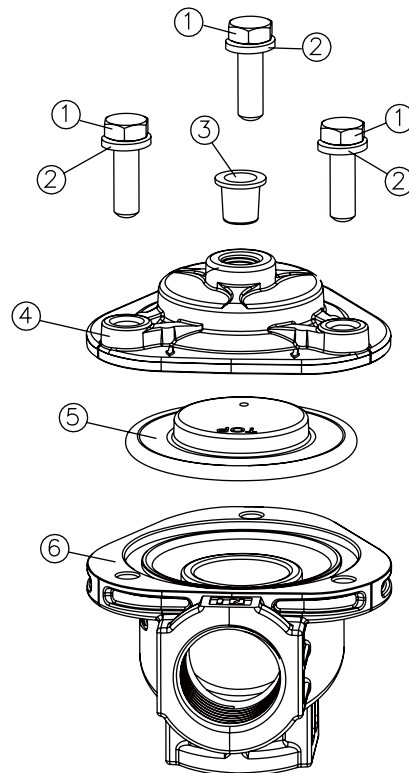
GENERAL FEATURES

Fluids : Air filtered and oil free air
 Diaphragm material : NBR
 Operation temp. : -20 ~ 85°C
 Ambient temp. : -20 ~ 60°C

NO.	
1	Hexagon cover screws
2	Spring washer
3	Plastic plug
4	Top cover
5	Diaphragm
6	Body

ELECTRICAL FEATURES

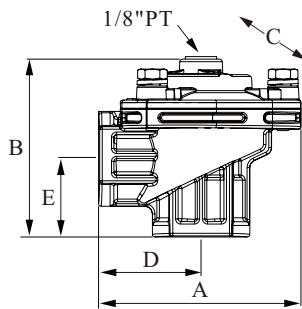
Coil insulation : Class F (155°C)
 Connector spec. : Flying leads (DIN 43650A)
 Electrical equipment : EN 60204.1 and VDE 0580
 Electrical protection : IP65 (EN 60529)
 Standard voltages : 24Vdc ± 10%,
 110Vac ± 10%, 50/60Hz
 220Vac ± 10%, 50/60Hz
 Power consumption : 12W for 24Vdc
 AC---17VA/50Hz
 AC---14.5VA/60Hz
 Ambient temp. : -20 ~ 50°C



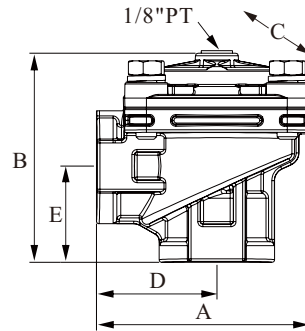
CONSTRUCTION

Cover : Aluminum
 Body : Aluminum

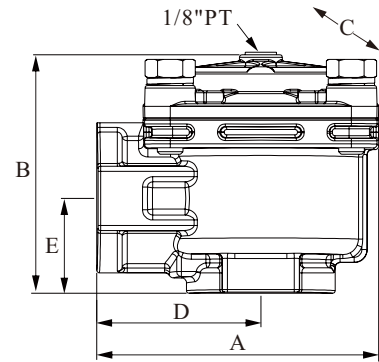
Model:BDV-20BS



Model:BDV-25BS

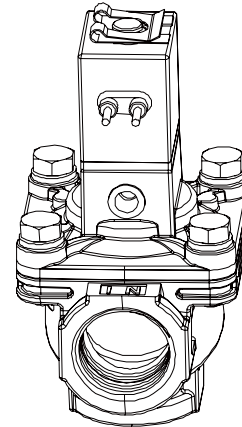


Model:BDV-40BS



Model	A		B		C (wide)		D		E	
	inch	mm	inch	mm	inch	mm	inch	mm	inch	mm
BDV-20BS	3.11	79	2.75	70	2.87	73	1.57	40	1.22	31
BDV-25BS	3.3	84	3.22	82	2.87	73	1.85	47	1.49	38
BDV-40BS	4.33	110	3.66	93	3.62	92	2.52	64	1.45	37

Model	Orifice (inch)	Number (Diaphragm)	Flow factor Kv (m ³ /h)	Flow factor Cv (gal/min)	Operating pressure (Bar)	Weight (g)
BDV-20BS	3/4"	1	12.04	14	0.3 ~ 8.6	220
BDV-25BS	1"	1	19.78	23	0.3 ~ 8.6	370
BDV-40BS	1-1/2"	1	36.12	42	0.3 ~ 8.6	680



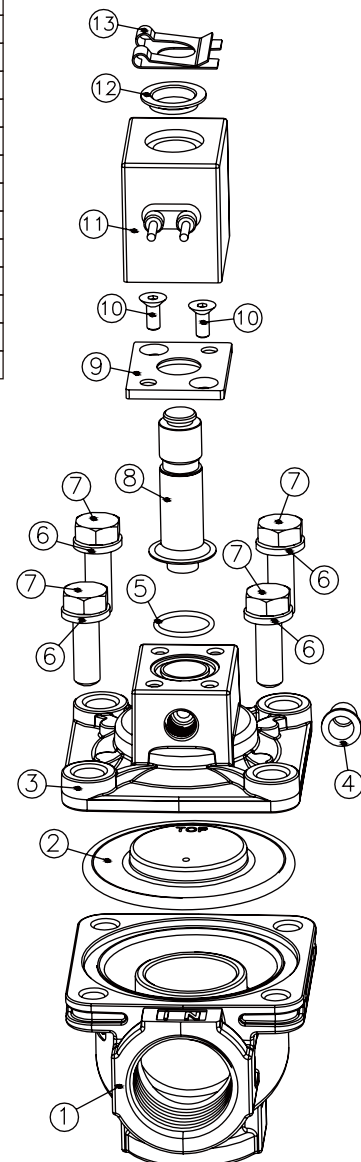
GENERAL FEATURES

Fluids : Air
 Diaphragm material : Specially Plastics
 Operation temp. : -20 ~ 85°C
 Ambient temp. : -20 ~ 60°C

ELECTRICAL FEATURES

Coil insulation : Class F (155°C)
 Connector spec. : Flying leads (DIN 43650A)
 Electrical equipment : EN 60204.1 and VDE 0580
 Electrical protection : IP65 (EN 60529)
 Standard voltages : 24Vdc ± 10%,
 110Vac ± 10%, 50/60Hz
 220Vac ± 10%, 50/60Hz
 Power consumption : 12W for 24Vdc
 AC---17VA/50Hz
 AC---14.5VA/60Hz
 Ambient temp. : -20 ~ 50°C

NO.	
1	Body
2	Diaphragm
3	Top cover
4	Plastic plug
5	O-ring
6	Spring washer
7	Hexagon cover screws
8	Pilot group
9	Base
10	Screws
11	Solenoid valve
12	Washer
13	Clip

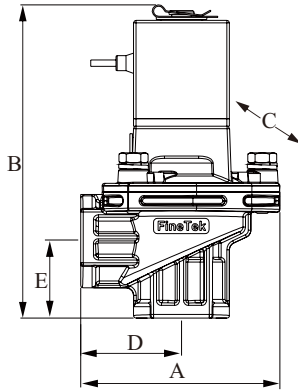


CONSTRUCTION

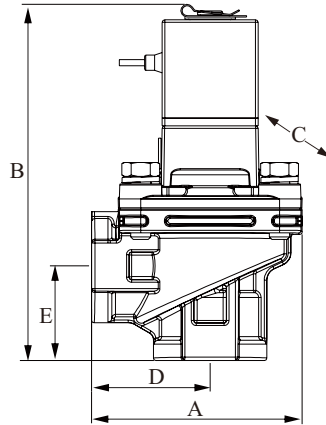
Cover : Aluminum
 Body : Aluminum

DIAPHRAGM VALVES WITH FEMALE THREAD INTEGRATED TYPE

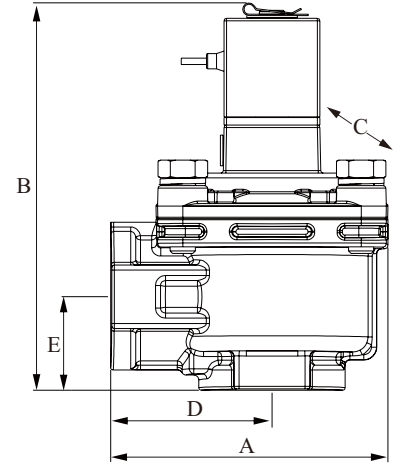
Model:BDV-20AS



Model:BDV-25AS



Model:BDV-40AS



Model	A		B		C (wide)		D		E	
	inch	mm	inch	mm	inch	mm	inch	mm	inch	mm
BDV-20AS□C□	3.11	79	4.88	124	2.87	73	1.57	40	1.22	31
BDV-25AS□C□	3.3	84	5.55	141	2.87	73	1.85	47	1.49	38
BDV-40AS□C□	4.33	110	6	153	3.62	92	2.52	64	1.45	37

Model	Orifice (inch)	Number (Diaphragm)	Flow factor Kv (m ³ /h)	Flow factor Cv (gal/min)	Operating pressure (Bar)	Weight (g)
BDV-20AS□C□	3/4"	1	12.04	14	0.3 ~ 8.6	470
BDV-25AS□C□	1"	1	19.78	23	0.3 ~ 8.6	620
BDV-40AS□C□	1-1/2"	1	36.12	42	0.3 ~ 8.6	930

DIAPHRAGM VALVES WITH FEMALE THREAD(NBR DIAPHRAGM)



DESCRIPTION

Fast response, large flow volume, effective cleaning action on fabric filter.
 Low air consumption.
 Compatible with programmable sequential controller.
 Ease of adjustment in jet pulse timing and duration.

APPLICATION

Pulse cleaning and filtering system in dust collectors, also suitable for filter bags, filter barrels, flat bags, ceramic tubes and filter bags for metal fiber.

ORDER INFORMATION

BRD 1 0 0 0 0 - A ^⑩ ^⑪ ^⑫ ^⑬ 0 7 MH ^⑱

⑩ Control method and wiring

- A: Integrated type; Solenoid valve with lead wire
- B: Integrated type; Solenoid valve with DIN connector
- C: Remote type

⑪ ⑫ Process connection

- A7: 3/4"
- A8: 1"
- B1: 1-1/2"
- B2: 2"
- B4: 2-1/2"
- B5: 3"

⑬ Diaphragm type

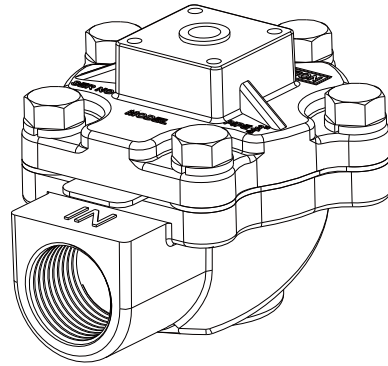
- A: Single diaphragm
- B: Dual diaphragm

⑱ Power supply for solenoid valve

- A: 110Vac
- B: 220Vac
- C: 24Vdc
- 0: Without solenoid valve

*Please refer to page 39 For model and order code comparison table

DIAPHRAGM VALVES WITH FEMALE THREAD REMOTE TYPE



GENERAL FEATURES

Fluids : Air filtered and oil free air
 Diaphragm material : NBR
 Operation temp. : -20 ~ 85°C
 Ambient temp. : -20 ~ 60°C

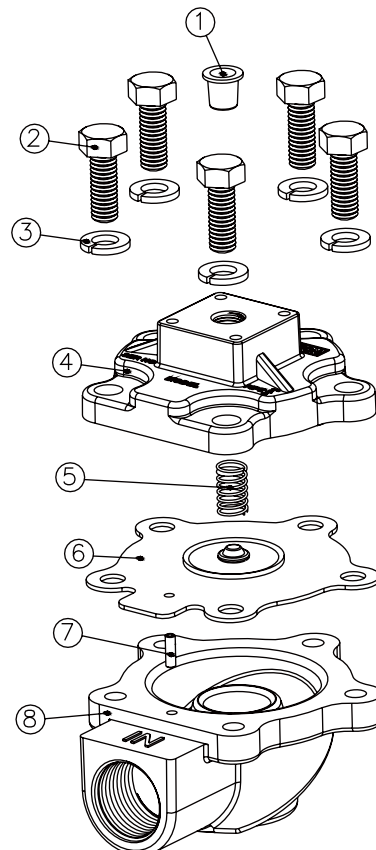
ELECTRICAL FEATURES

Coil insulation : Class F (155°C)
 Connector spec. : Flying leads (DIN 43650A)
 Electrical equipment : EN 60204.1 and VDE 0580
 Electrical protection : IP65 (EN 60529)
 Standard voltages : 24Vdc ± 10%,
 110Vac ± 10%, 50/60Hz
 220Vac ± 10%, 50/60Hz
 Power consumption : 12W for 24Vdc
 AC---17VA/50Hz
 AC---14.5VA/60Hz
 Ambient temp. : -20 ~ 50°C

NO.	
1	Plastic plug
2	Hexagon cover screws
3	Spring washer
4	Top cover
5	Spring
6	Diaphragm
7	Air passage
8	Body

CONSTRUCTION

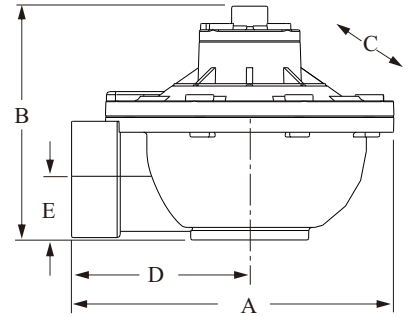
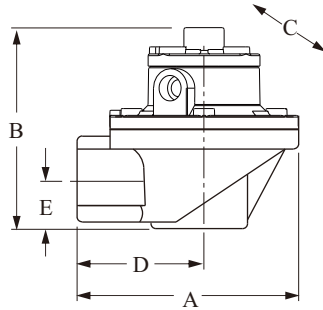
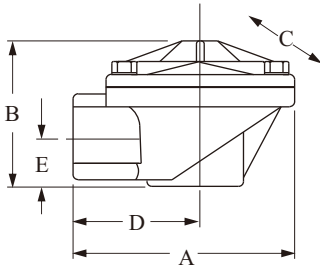
Cover : Aluminum
 Body : Aluminum



Model: BRD-□□SC

Model: BRD-42SC

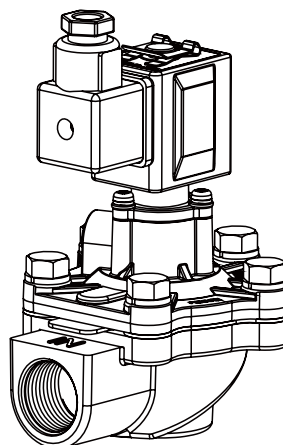
Model: BRD-□2SC



Model	A		B		C (wide)		D		E	
	inch	mm	inch	mm	inch	mm	inch	mm	inch	mm
BRD-20SC	3.95	100	2.97	75	3.44	87	2.19	56	0.78	20
BRD-25SC	4.13	105	3	76	3.25	83	2.50	64	0.87	22
BRD-40SC	5.12	130	4.91	125	4.37	111	4.5	75	1.28	36
BRD-42SC	5.12	130	5.16	131	4.37	111	4.5	75	1.28	36
BRD-52SC	8.07	205	5.87	149	7.24	184	4.45	113	1.55	40
BRD-62SC	8.27	210	6.69	170	7.24	184	4.65	118	1.89	48
BRD-72SC	8.58	218	7.83	199	7.87	200	4.65	118	2.48	63

Model	Orifice (inch)	Number (Diaphragm)	Flow factor Kv (m ³ /h)	Flow factor Cv (gal/min)	Operating pressure (Bar)	Weight (g)
BRD-20SC	3/4"	1	12.04	14	0.3 ~ 8.6	420
BRD-25SC	1"	1	19.78	23	0.3 ~ 8.6	520
BRD-40SC	1-1/2"	1	36.12	42	0.3 ~ 8.6	960
BRD-42SC	1-1/2"	2	43.86	51	0.3 ~ 8.6	1160
BRD-52SC	2"	2	91.16	106	0.3 ~ 8.6	2380
BRD-62SC	2-1/2"	2	116.96	136	0.3 ~ 8.6	2500
BRD-72SC	3"	2	143.62	167	0.3 ~ 8.6	3000

DIAPHRAGM VALVES WITH FEMALE THREAD INTEGRATED TYPE



GENERAL FEATURES

Fluids : Air filtered and oil free air
 Diaphragm material : NBR
 Operation temp. : -20 ~ 85°C
 Ambient temp. : -20 ~ 60°C

ELECTRICAL FEATURES

Coil insulation : Class F (155°C)
 Connector spec. : Flying leads (DIN 43650A)
 Electrical equipment : EN 60204.1 and VDE 0580
 Electrical protection : IP65 (EN 60529)
 Standard voltages : 24Vdc ± 10%,
 110Vac ± 10%, 50/60Hz
 220Vac ± 10%, 50/60Hz

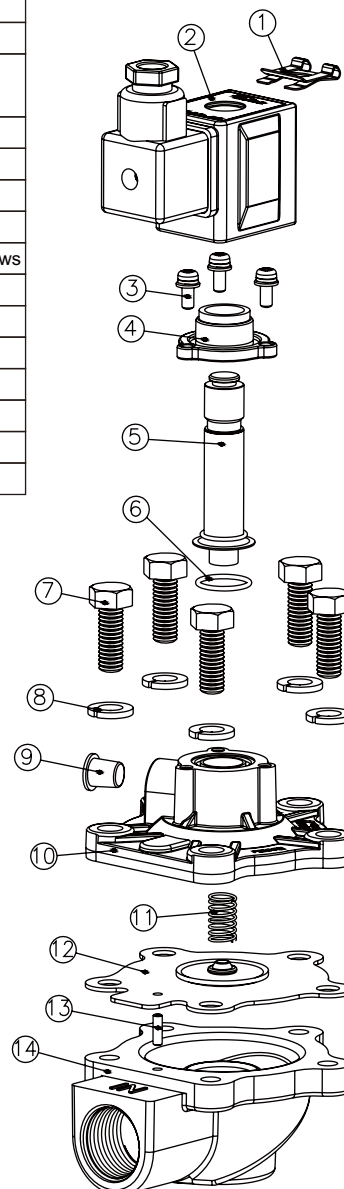
Power consumption : 12W for 24Vdc
 AC---17VA/50Hz
 AC---14.5VA/60Hz

Ambient temp. : -20 ~ 50°C

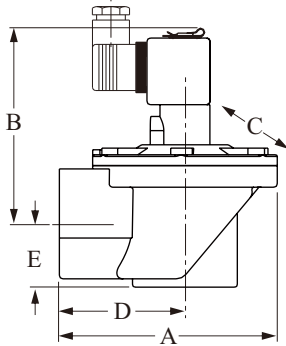
CONSTRUCTION

Cover : Aluminum
 Body : Aluminum

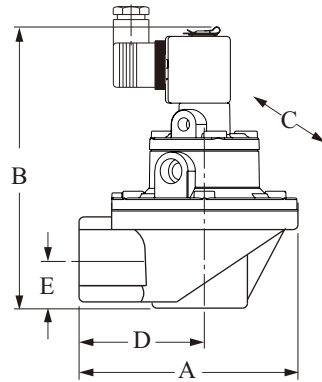
NO.	
1	Clip
2	Solenoid valve with DIN connector
3	Screws
4	Base
5	Pilot group
6	O-ring
7	Hexagon cover screws
8	Spring washer
9	Plastic plug
10	Top cover
11	Spring
12	Diaphragm
13	Air passage
14	Body



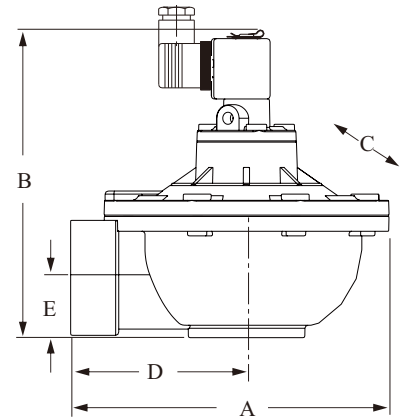
Model:BRD-□□SC



Model:BRD-42SC



Model:BRD-□2SC



Model	A		B		C (wide)		D		E	
	inch	mm	inch	mm	inch	mm	inch	mm	inch	mm
BRD-20SC□	3.95	100	4.8	122	3.44	87	2.19	56	0.78	20
BRD-25SC□	4.13	105	4.96	126	3.25	83	2.50	64	0.87	22
BRD-40SC□	5.12	130	6.06	154	4.37	111	4.5	75	1.28	36
BRD-42SC□	5.12	130	7.20	183	4.37	111	4.5	75	1.28	36
BRD-52SC□	8.07	205	7.91	201	7.24	184	4.45	113	1.55	40
BRD-62SC□	8.27	210	8.74	222	7.24	184	4.65	118	1.89	48
BRD-72SC□	8.58	218	9.88	251	7.87	200	4.65	118	2.48	63

Model	Orifice (inch)	Number (Diaphragm)	Flow factor Kv (m ³ /h)	Flow factor Cv (gal/min)	Operating pressure (Bar)	Weight (g)
BRD-20SC□	3/4"	1	12.04	14	0.3 ~ 8.6	600
BRD-25SC□	1"	1	19.78	23	0.3 ~ 8.6	750
BRD-40SC□	1-1/2"	1	36.12	42	0.3 ~ 8.6	1160
BRD-42SC□	1-1/2"	2	43.86	51	0.3 ~ 8.6	1000
BRD-52SC□	2"	2	91.16	106	0.3 ~ 8.6	1900
BRD-62SC□	2-1/2"	2	116.96	136	0.3 ~ 8.6	2500
BRD-72SC□	3"	2	143.62	167	0.3 ~ 8.6	4220

DIAPHRAGM VALVES WITH QUICK FITTINGS



DESCRIPTION

One piece membrane with better sealing to save air supply.
 Compact design for quick installation.
 Fewer components for easier maintenance.
 Fast response, large flow volume, effective cleaning action on fabric filter.
 Low air consumption.
 Compatible with programmable sequential controller.
 Ease of adjustment in jet pulse timing and duration.

APPLICATION

Pulse cleaning and filtering system in dust collectors, also suitable for filter bags, filter barrels, flat bags, ceramic tubes and filter bags for metal fiber.

ORDER INFORMATION

BDV 1 0 0 0 0 - B ^⑩□ ^⑪□ ^⑫□ A2 7MH ^⑱□

⑩ Control method and wiring

A: Integrated type; Solenoid valve with lead wire
 B: Integrated type; Solenoid valve with DIN connector
 C: Remote type

⑪ ⑫ Process connection

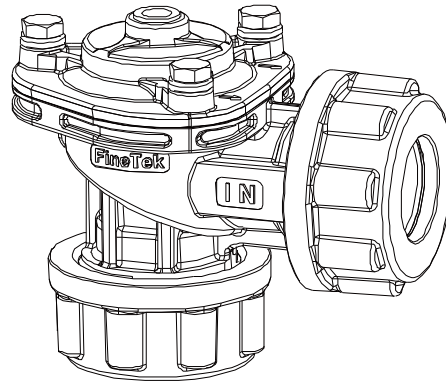
A7: 3/4"
 A8: 1"
 B1: 1-1/2"

⑱ Power supply for solenoid valve

A: 110Vac
 B: 220Vac
 C: 24Vdc
 0: Without solenoid valve

*Please refer to page 39 For model and order code comparison table

DIAPHRAGM VALVES WITH QUICK FITTINGS REMOTE TYPE



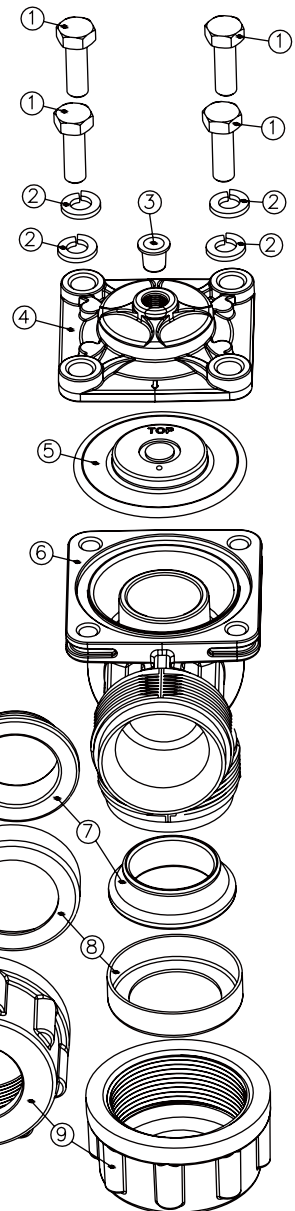
GENERAL FEATURES

Fluids : Air
 Diaphragm material : Specially Plastics
 Operation temp. : -20 ~ 85°C
 Ambient temp. : -20 ~ 60°C

ELECTRICAL FEATURES

Coil insulation : Class F (155°C)
 Connector spec. : Flying leads (DIN 43650A)
 Electrical equipment : EN 60204.1 and VDE 0580
 Electrical protection : IP65 (EN 60529)
 Standard voltages : 24Vdc ± 10%,
 110Vac ± 10%, 50/60Hz
 220Vac ± 10%, 50/60Hz
 Power consumption : 12W for 24Vdc
 AC---17VA/50Hz
 AC---14.5VA/60Hz
 Ambient temp. : -20 ~ 50°C

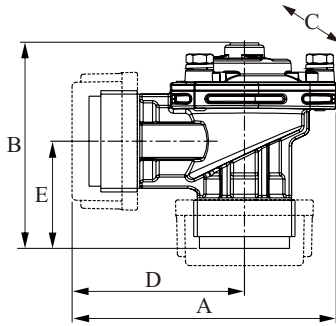
NO.	
1	Hexagon cover screws
2	Spring washer
3	Plastic plug
4	Top cover
5	Diaphragm
6	Body
7	Conic seal for dresser nut
8	Dresser nut insert
9	Dresser nut



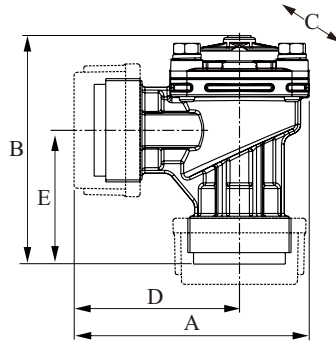
CONSTRUCTION

Cover : Aluminum
 Body : Aluminum

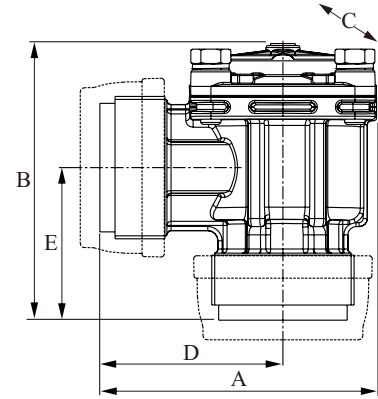
Model: BDV-20BN



Model: BDV-25BN



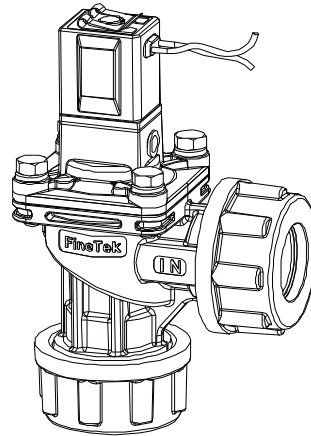
Model: BDV-40BN



Model	A		B		C (wide)		D		E	
	inch	mm	inch	mm	inch	mm	inch	mm	inch	mm
BDV-20BN	4.13	105	3.38	86	2.87	73	2.60	66	1.79	45.5
BDV-25BN	4.43	112.5	4.66	118.5	2.87	73	2.99	76	2.74	70
BDV-40BN	5.36	136	5.31	135	3.62	92	3.54	90	2.95	75

Model	Orifice (inch)	Number (Diaphragm)	Flow factor Kv (m ³ /h)	Flow factor Cv (gal/min)	Operating pressure (Bar)	Weight (g)
BDV-20BN	3/4"	1	12.04	14	0.3 ~ 8.6	460
BDV-25BN	1"	1	19.78	23	0.3 ~ 8.6	830
BDV-40BN	1-1/2"	1	36.12	42	0.3 ~ 8.6	680

DIAPHRAGM VALVES WITH QUICK FITTINGS INTEGRATED TYPE



GENERAL FEATURES

Fluids : Air
 Diaphragm material : Specially Plastics
 Operation temp. : -20 ~ 85°C
 Ambient temp. : -20 ~ 60°C

ELECTRICAL FEATURES

Coil insulation : Class F (155°C)
 Connector spec. : Flying leads (DIN 43650A)
 Electrical equipment : EN 60204.1 and VDE 0580
 Electrical protection : IP65 (EN 60529)
 Standard voltages : 24Vdc ± 10%,
 110Vac ± 10%, 50/60Hz
 220Vac ± 10%, 50/60Hz

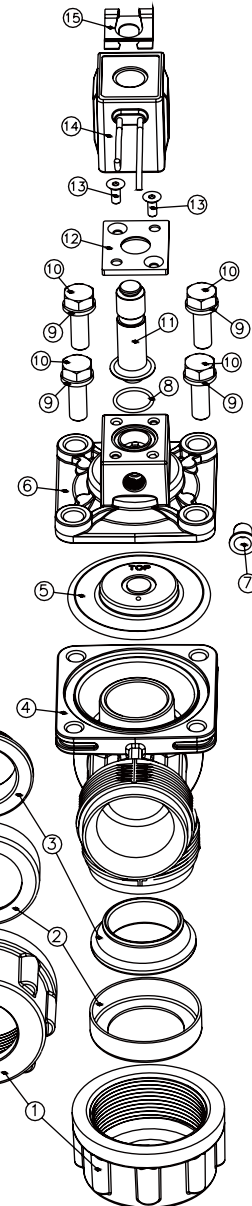
Power consumption : 12W for 24Vdc
 AC---17VA/50Hz
 AC---14.5VA/60Hz

Ambient temp. : -20 ~ 50°C

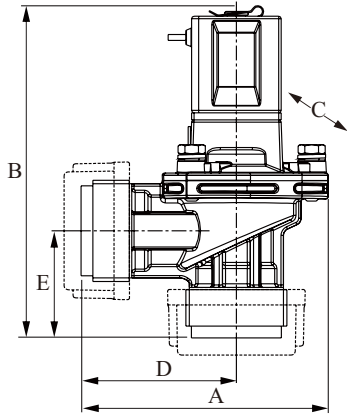
CONSTRUCTION

Cover : Aluminum
 Body : Aluminum

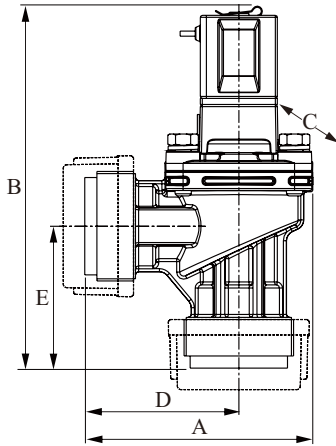
NO.	
1	Dresser nut
2	Dresser nut insert
3	Conic seal for dresser nut
4	Body
5	Diaphragm
6	Top cover
7	Plastic plug
8	O-ring
9	Spring washer
10	Hexagon cover screws
11	Pilot group
12	Base
13	Screws
14	Solenoid valve
15	Clip



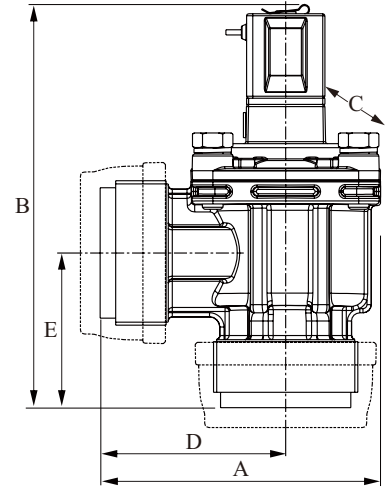
Model: BDV-20AN



Model: BDV-25AN



Model: BDV-40AN



Model	A		B		C (wide)		D		E	
	inch	mm	inch	mm	inch	mm	inch	mm	inch	mm
BDV-20AN□C□	4.13	105	5.55	141	2.87	73	2.60	66	1.79	45.5
BDV-25AN□C□	4.43	112.5	7.02	178.5	2.87	73	2.99	76	2.74	70
BDV-40AN□C□	5.36	136	7.69	195.5	3.62	92	3.54	90	2.75	75

Model	Orifice (inch)	Number (Diaphragm)	Flow factor Kv (m ³ /h)	Flow factor Cv (gal/min)	Operating pressure (Bar)	Weight (g)
BDV-20AN□C□	3/4"	1	12.04	14	0.3 ~ 8.6	700
BDV-25AN□C□	1"	1	19.78	23	0.3 ~ 8.6	1080
BDV-40AN□C□	1-1/2"	1	36.12	42	0.3 ~ 8.6	930

DIAPHRAGM VALVES WITH QUICK FITTINGS



DESCRIPTION

NC Series is a range of diaphragm solenoid valves for the cleaning of dust collector filters with compressed air. These valves allow a very quick connection, by fitting directly to non-threaded pipes.

APPLICATION

Pulse cleaning and filtering system in dust collectors, also suitable for filter bags, filter barrels, flat bags, ceramic tubes and filter bags for metal fiber.

ORDER INFORMATION

BRD 1 0 0 0 0 - B ^⑩ ^⑪ ^⑫ ^⑬ 0 7 MH ^⑱

⑩ Control method and wiring

- A : Integrated type; Solenoid valve with lead wire
- B : Integrated type; Solenoid valve with DIN connector
- C : Remote type

⑪ ⑫ Process connection

- A7: 3/4"
- A8: 1"
- B1: 1-1/2"

⑬ Diaphragm type

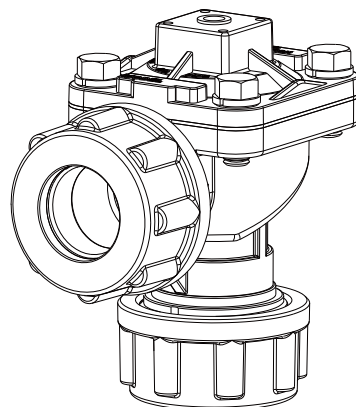
- A : Single diaphragm
- B : Dual diaphragm

⑱ Power supply for solenoid valve

- A: 110Vac
- B: 220Vac
- C: 24Vdc
- 0: Without solenoid valve

*Please refer to page 39 For model and order code comparison table

DIAPHRAGM VALVES WITH QUICK FITTINGS REMOTE TYPE



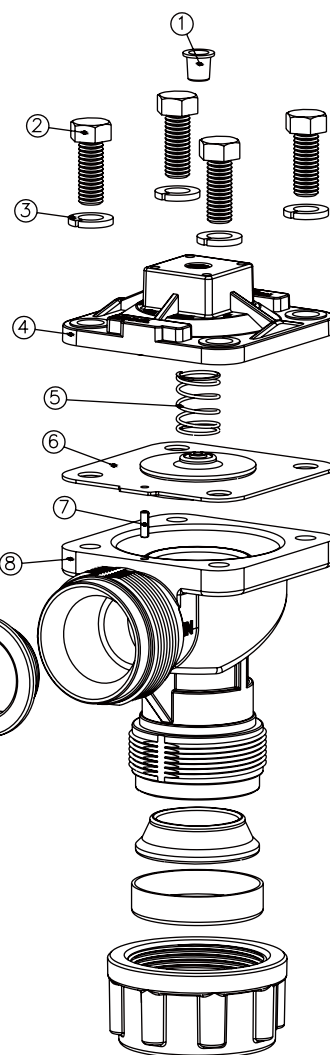
GENERAL FEATURES

Fluids : Air filtered and oil free air
 Diaphragm material : NBR
 Operation temp. : -20 ~ 85°C
 Ambient temp. : -20 ~ 60°C

ELECTRICAL FEATURES

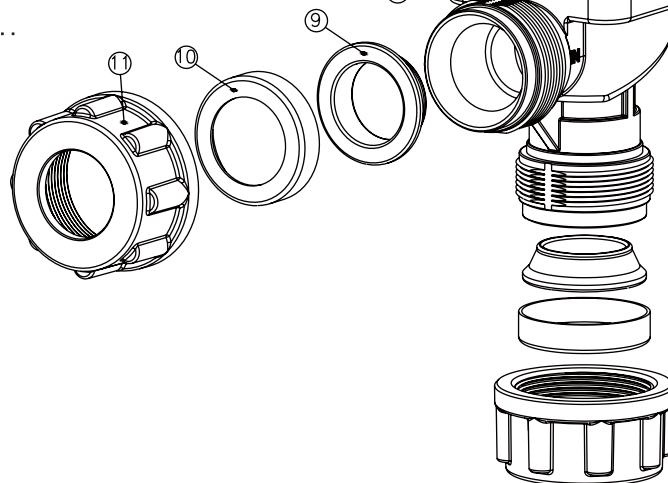
Coil insulation : Class F (155°C)
 Connector spec. : Flying leads (DIN 43650A)
 Electrical equipment : EN 60204.1 and VDE 0580
 Electrical protection : IP65 (EN 60529)
 Standard voltages : 24Vdc ± 10%,
 110Vac ± 10%, 50/60Hz
 220Vac ± 10%, 50/60Hz
 Power consumption : 12W for 24Vdc
 AC---17VA/50Hz
 AC---14.5VA/60Hz
 Ambient temp. : -20 ~ 50°C

NO.	
1	Plastic plug
2	Hexagon cover screws
3	Spring washer
4	Top cover
5	Spring
6	Diaphragm
7	Air passage
8	Body
9	Conic seal for dresser nut
10	Dresser nut insert
11	Dresser nut



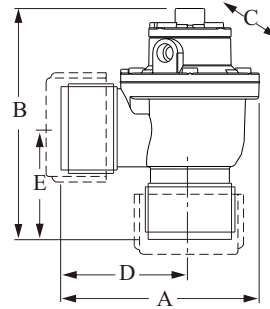
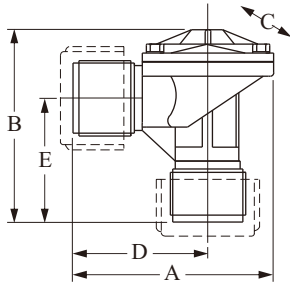
CONSTRUCTION

Cover : Aluminum
 Body : Aluminum



Model: BRD-□□NC

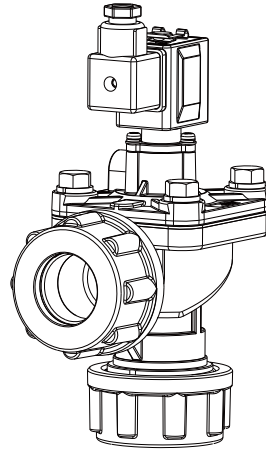
Model: BRD-42NC



Model	A		B		C (wide)		D		E	
	inch	mm	inch	mm	inch	mm	inch	mm	inch	mm
BRD-20NC	4.41	112	4	102	3.43	87	2.63	67	1.77	45
BRD-25NC	4.62	117	5	127	3.25	83	3	76	2.75	70
BRD-40NC	5.78	147	5.47	139	4.37	111	3.6	92	3	76
BRD-42NC	5.78	147	6.77	172	4.37	111	3.6	92	3	76

Model	Orifice (inch)	Number (Diaphragm)	Flow factor Kv (m ³ /h)	Flow factor Cv (gal/min)	Operating pressure (Bar)	Weight (g)
BRD-20NC	3/4"	1	12.04	14	0.3 ~ 8.6	620
BRD-25NC	1"	1	19.78	23	0.3 ~ 8.6	960
BRD-40NC	1-1/2"	1	36.12	42	0.3 ~ 8.6	1100
BRD-42NC	1-1/2"	2	43.86	51	0.3 ~ 8.6	1760

DIAPHRAGM VALVES WITH QUICK FITTINGS INTEGRATED TYPE



GENERAL FEATURES

Fluids : Air filtered and oil free air
 Diaphragm material : NBR
 Operation temp. : -20 ~ 85°C
 Ambient temp. : -20 ~ 60°C

ELECTRICAL FEATURES

Coil insulation : Class F (155°C)
 Connector spec. : Flying leads (DIN 43650A)
 Electrical equipment : EN 60204.1 and VDE 0580
 Electrical protection : IP65 (EN 60529)
 Standard voltages : 24Vdc ± 10%,
 110Vac ± 10%, 50/60Hz
 220Vac ± 10%, 50/60Hz

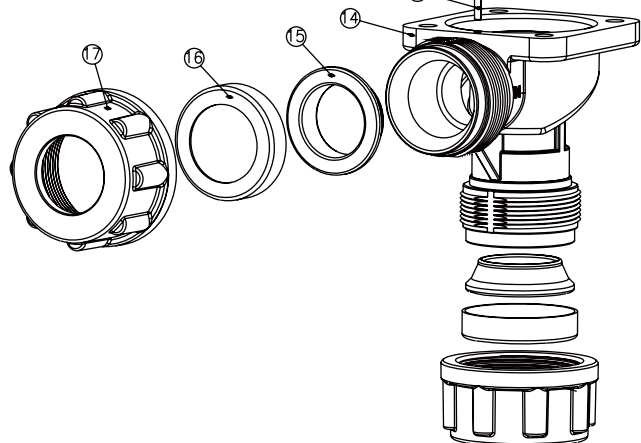
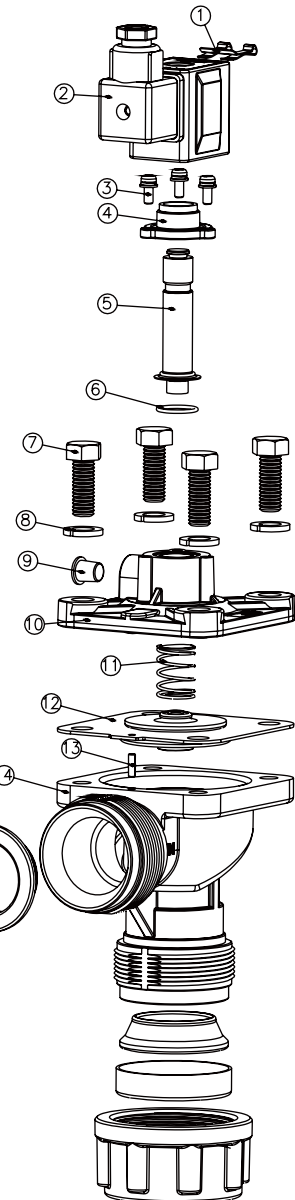
Power consumption : DC-12W for 24Vdc
 AC---17VA/50Hz
 AC---14.5VA/60Hz

Ambient temp. : -20 ~ 50°C

CONSTRUCTION

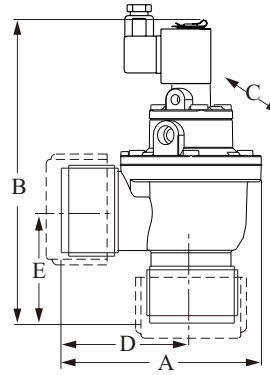
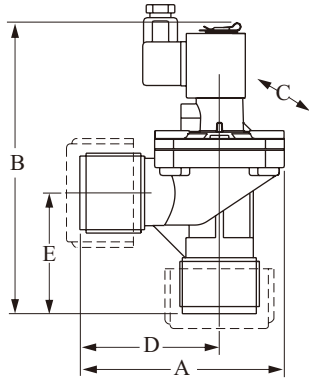
Cover : Aluminum
 Body : Aluminum

NO.	
1	Clip
2	Solenoid valve with DIN connector
3	Screws
4	Base
5	Pilot group
6	O-ring
7	Hexagon cover screws
8	Spring washer
9	Plastic plug
10	Top cover
11	Spring
12	Diaphragm
13	Air passage
14	Body
15	Conic seal for dresser nut
16	Dresser nut insert
17	Dresser nut



Model: BRD-□□NC□

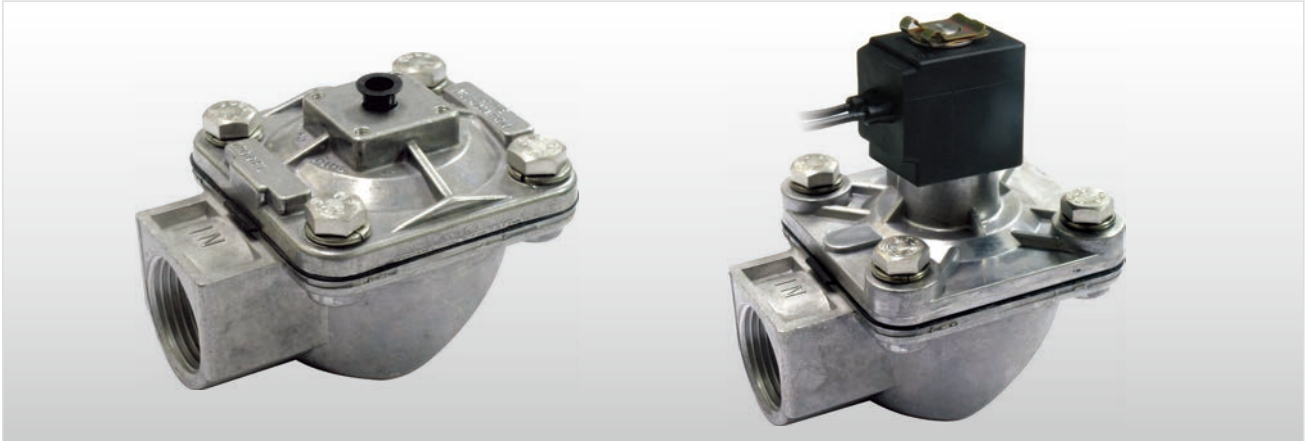
Model: BRD-42NC□



Model	A		B		C (wide)		D		E	
	inch	mm	inch	mm	inch	mm	inch	mm	inch	mm
BRD-20NC□	4.41	112	5.83	148	3.43	87	2.63	67	1.87	45
BRD-25NC□	4.62	117	6.96	177	3.25	83	3	76	2.75	70
BRD-40NC□	5.78	147	7.64	194	4.37	111	3.6	92	3	76
BRD-42NC□	5.78	147	8.82	224	4.37	111	3.6	92	3	76

Model	Orifice (inch)	Number (Diaphragm)	Flow factor Kv (m ³ /h)	Flow factor Cv (gal/min)	Operating pressure (Bar)	Weight (g)
BRD-20NC□	3/4"	1	12.04	14	0.3 ~ 8.6	830
BRD-25NC□	1"	1	19.78	23	0.3 ~ 8.6	1220
BRD-40NC□	1-1/2"	1	36.12	42	0.3 ~ 8.6	1770
BRD-42NC□	1-1/2"	2	43.86	51	0.3 ~ 8.6	1450

STAINLESS STEEL DIAPHRAGM VALVES WITH FEMALE THREADS



DESCRIPTION

The range of UC Series includes two models of 1" and 1-1/2", both single diaphragm and threaded female gas connections. These valves are made of Stainless Steel SUS316. These types of diaphragm valves are suitable for installation in very corrosive environments such as chemical industry, nuclear and off-shore plants.

APPLICATION

Pulse cleaning and filtering system in dust collectors, also suitable for filter bags, filter barrels, flat bags, ceramic tubes and filter bags for metal fiber.

ORDER INFORMATION

BRD 1 0 0 0 0 - A ^⑩ ^⑪ ^⑫ A 0 7 MA ^⑱

⑩ Control method and wiri

- A: Integrated type; Solenoid valve with lead wire
- B: Integrated type; Solenoid valve with DIN connector
- C: Remote type

⑪ ⑫ Process connection

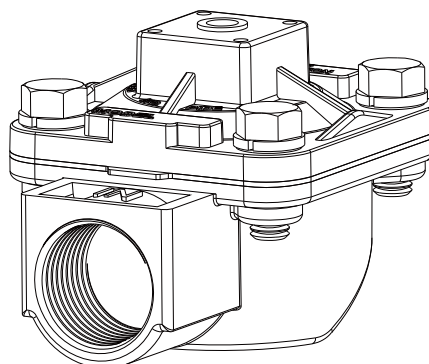
- A8: 1"
- B1: 1-1/2"

⑱ Power supply for solenoid valve

- A: 110Vac
- B: 220Vac
- C: 24Vdc
- 0: Without solenoid valve

*Please refer to page 39 For model and order code comparison table

STAINLESS STEEL DIAPHRAGM VALVES WITH FEMALE THREADS REMOTE TYPE



GENERAL FEATURES

Fluids : Air filtered and oil free air
 Diaphragm material : NBR
 Operation temp. : -20 ~ 85°C
 Ambient temp. : -20 ~ 60°C

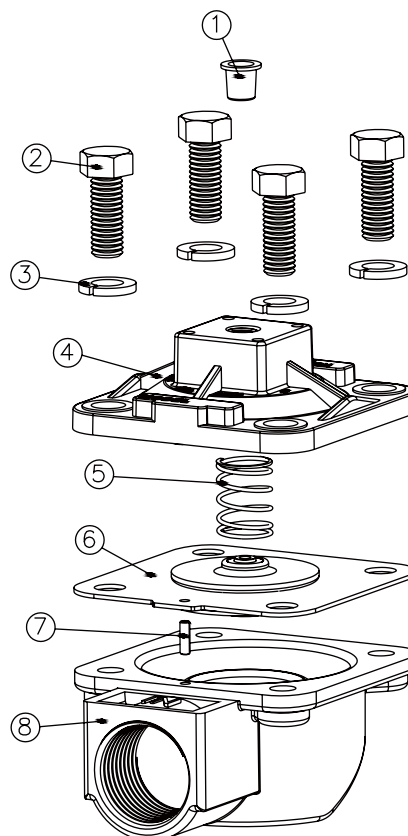
ELECTRICAL FEATURES

Coil insulation : Class F (155°C)
 Connector spec. : Flying leads (DIN 43650A)
 Electrical equipment : EN 60204.1 and VDE 0580
 Electrical protection : IP65 (EN 60529)
 Standard voltages : 24Vdc ± 10%,
 110Vac ± 10%, 50/60Hz
 220Vac ± 10%, 50/60Hz
 Power consumption : 12W for 24Vdc
 AC---17VA/50Hz
 AC---14.5VA/60Hz
 Ambient temp. : -20 ~ 50°C

NO.	
1	Plastic plug
2	Hexagon cover screws
3	Spring washer
4	Top cover
5	Spring
6	Diaphragm
7	Air passage
8	Body

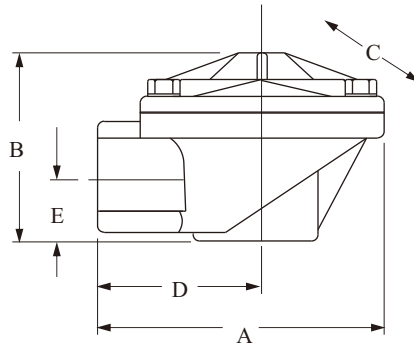
CONSTRUCTION

Cover : Aluminum
 Body : Aluminum



STAINLESS STEEL DIAPHRAGM VALVES WITH FEMALE THREADS REMOTE TYPE

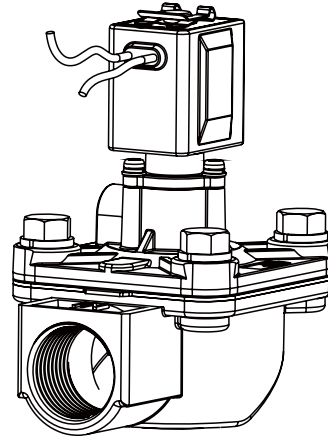
Model: BRD-□□UC



Model	A		B		C (wide)		D		E	
	inch	mm	inch	mm	inch	mm	inch	mm	inch	mm
BRD-25UC	4.13	105	3	76	3.25	83	2.50	64	0.87	22
BRD-40UC	5.12	130	4.91	125	4.37	111	4.5	75	1.28	36

Model	Orifice (inch)	Number (Diaphragm)	Flow factor Kv (m ³ /h)	Flow factor Cv (gal/min)	Operating pressure (Bar)	Weight (g)
BRD-25UC	1"	1	19.78	23	0.3 ~ 8.6	1800
BRD-40UC	1-1/2"	1	36.12	42	0.3 ~ 8.6	2700

STAINLESS STEEL DIAPHRAGM VALVES WITH FEMALE THREADS INTEGRATED TYPE



GENERAL FEATURES

Fluids : Air filtered and oil free air
 Diaphragm material : NBR
 Operation temp. : -20 ~ 85°C
 Ambient temp. : -20 ~ 60°C

ELECTRICAL FEATURES

Coil insulation : Class F (155°C)
 Connector spec. : Flying leads (DIN 43650A)
 Electrical equipment : EN 60204.1 and VDE 0580
 Electrical protection : IP65 (EN 60529)
 Standard voltages : 24Vdc ± 10%,
 110Vac ± 10%, 50/60Hz
 220Vac ± 10%, 50/60Hz

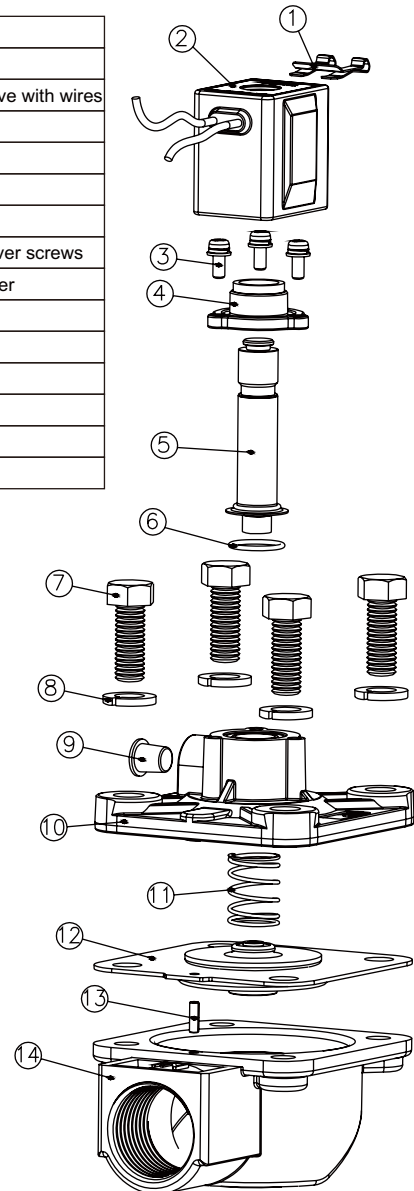
Power consumption : 12W for 24Vdc
 AC---17VA/50Hz
 AC---14.5VA/60Hz

Ambient temp. : -20 ~ 50°C

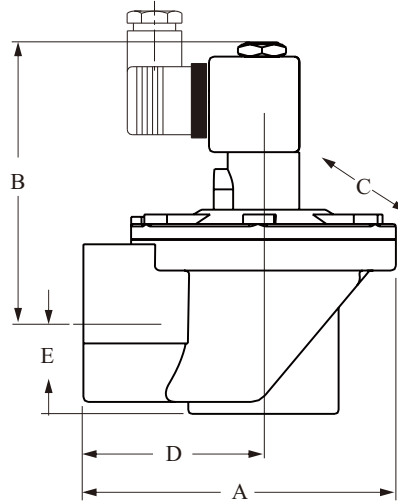
CONSTRUCTION

Cover : Aluminum
 Body : Aluminum

NO.	
1	Clip
2	Solenoid valve with wires
3	Screws
4	Base
5	Pilot group
6	O-ring
7	Hexagon cover screws
8	Spring washer
9	Plastic plug
10	Top cover
11	Spring
12	Diaphragm
13	Air passage
14	Body



Model: BRD-□□UC□



Model	A		B		C (wide)		D		E	
	inch	mm	inch	mm	inch	mm	inch	mm	inch	mm
BRD-25UC	4.13	105	4.96	126	3.25	83	2.50	64	0.87	22
BRD-40UC	5.12	130	6.06	154	4.37	111	4.5	76	1.28	36

Model	Orifice (inch)	Number (Diaphragm)	Flow factor Kv (m ³ /h)	Flow factor Cv (gal/min)	Operating pressure (Bar)	Weight (g)
BRD-25UC	1"	1	19.78	23	0.3 ~ 8.6	1800
BRD-40UC	1-1/2"	1	36.12	42	0.3 ~ 8.6	2700

“FULL IMMERSION” DIAPHRAGM VALVES



DESCRIPTION

The range of UC Series includes two models of 1" and 1-1/2", both single diaphragm and threaded female gas connections. These valves are made of Stainless Steel SUS316. These types of diaphragm valves are suitable for installation in very corrosive environments such as chemical industry, nuclear and off-shore plants.

APPLICATION

Pulse cleaning and filtering system in dust collectors, also suitable for filter bags, filter barrels, flat bags, ceramic tubes and filter bags for metal fiber.

ORDER INFORMATION

BRD 1 0 0 0 0 - C ^⑩ ^⑪ ^⑫ ^⑬ 0 7 MH ^⑱

⑩ Control method and wiring

- A: Integrated type; Solenoid valve with lead wire
- B: Integrated type; Solenoid valve with DIN connector
- C: Remote type

⑪ ⑫ Process connection

- A8: 1"
- B1: 1-1/2"

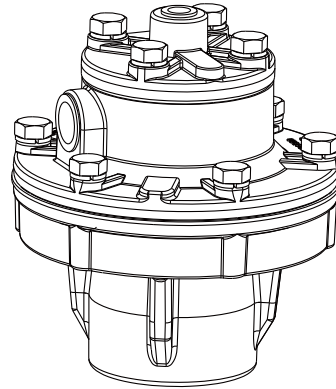
⑬ Diaphragm type

- A: Single diaphragm
- B: Dual diaphragm

⑱ Power supply for solenoid valve

- A: 110Vac
- B: 220Vac
- C: 24Vdc
- 0: Without solenoid valve

*Please refer to page 39 For model and order code comparison table



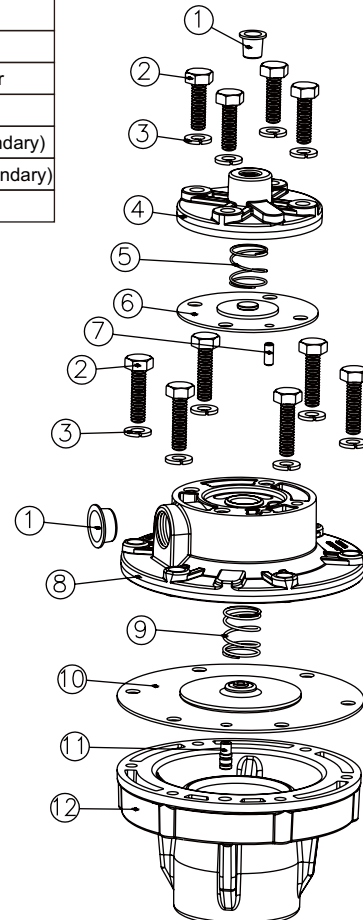
GENERAL FEATURES

Fluids : Air filtered and oil free air
 Diaphragm material : NBR
 Operation temp. : -20 ~ 85°C
 Ambient temp. : -20 ~ 60°C

ELECTRICAL FEATURES

Coil insulation : Class F (155°C)
 Connector spec. : Flying leads (DIN 43650A)
 Electrical equipment : EN 60204.1 and VDE 0580
 Electrical protection : IP65 (EN 60529)
 Standard voltages : 24Vdc ± 10%,
 110Vac ± 10%, 50/60Hz
 220Vac ± 10%, 50/60Hz
 Power consumption : 12W for 24Vdc
 AC---17VA/50Hz
 AC---14.5VA/60Hz
 Ambient temp. : -20 ~ 50°C

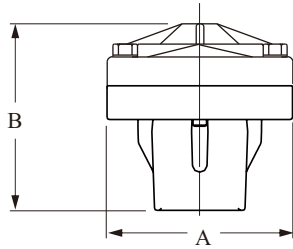
NO.	
1	Plastic plug
2	Hexagon cover screws
3	Spring washer
4	Top cover
5	Spring
6	Diaphragm
7	Air passage
8	intermediate cover
9	Spring
10	Diaphragm (secondary)
11	Air passage (secondary)
12	Body



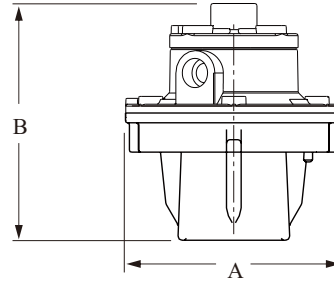
CONSTRUCTION

Cover : Aluminum
 Body : Aluminum

Model: BRD-25MM



Model: BRD-45MM

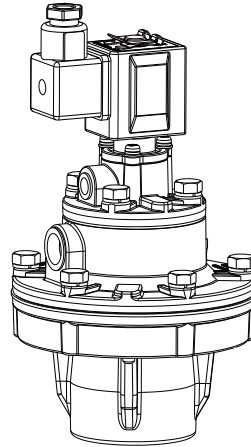


Model	A		B	
	inch	mm	inch	mm
BRD-25MM	3.25	83	3.5	89
BRD-42MM	5.78	147	4.88	124

Model	Orifice (inch)	Number (Diaphragm)	Flow factor Kv (m ³ /h)	Flow factor Cv (gal/min)	Operating pressure (Bar)	Weight (g)
BRD-25MM	1"	1	19.78	23	0.3 ~ 8.6	350
BRD-42MM	1-1/2"	2	43.86	51	0.3 ~ 8.6	650

*Other option BRD-40MM

“FULL IMMERSION” DIAPHRAGM VALVES INTEGRATED TYPE



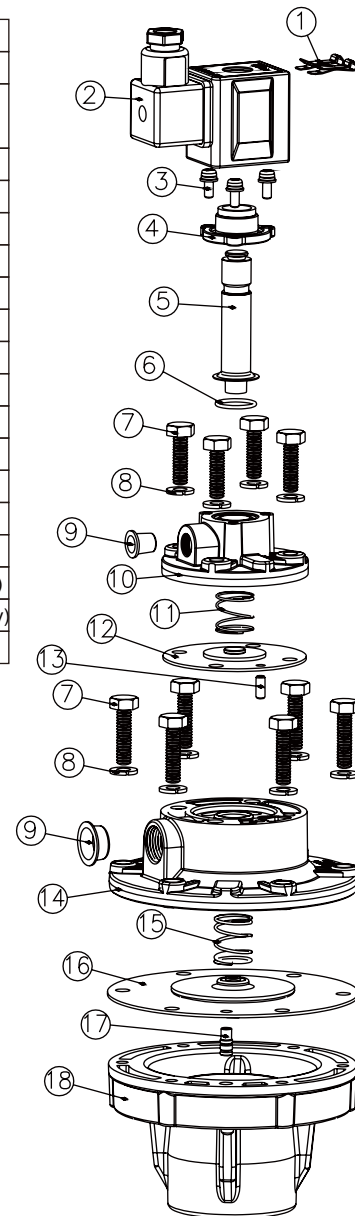
GENERAL FEATURES

Fluids : Air filtered and oil free air
 Diaphragm material : NBR
 Operation temp. : -20 ~ 85°C
 Ambient temp. : -20 ~ 60°C

ELECTRICAL FEATURES

Coil insulation : Class F (155°C)
 Connector spec. : Flying leads (DIN 43650A)
 Electrical equipment : EN 60204.1 and VDE 0580
 Electrical protection : IP65 (EN 60529)
 Standard voltages : 24Vdc ± 10%,
 110Vac ± 10%, 50/60Hz
 220Vac ± 10%, 50/60Hz
 Power consumption : 12W for 24Vdc
 AC---17VA/50Hz
 AC---14.5VA/60Hz
 Ambient temp. : -20 ~ 50°C

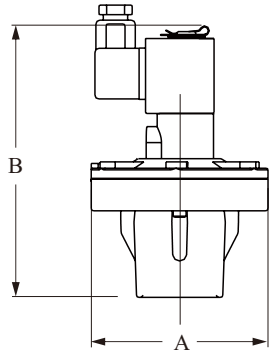
NO.	
1	Clip
2	Solenoid valve with DIN connector
3	Screws
4	Base
5	Pilot group
6	O-ring
7	Hexagon cover screws
8	Spring washer
9	Plastic plug
10	Top cover
11	Spring
12	Diaphragm
13	Air passage
14	intermediate cover
15	Spring
16	Diaphragm (secondary)
17	Air passage (secondary)
18	Body



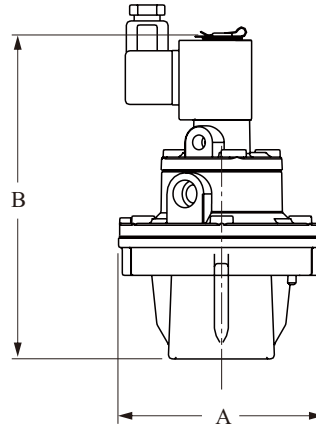
CONSTRUCTION

Cover : Aluminum
 Body : Aluminum

Model: BRD-25MM□



Model: BRD-42MM□



Model	A		B	
	inch	mm	inch	mm
BRD-25MM□	3.25	83	3.5	89
BRD-42MM□	5.78	147	6.92	176

Model	Orifice (inch)	Number (Diaphragm)	Flow factor Kv (m ³ /h)	Flow factor Cv (gal/min)	Operating pressure (Bar)	Weight (g)
BRD-25MM□	1"	1	19.78	23	0.3 ~ 8.6	350
BRD-42MM□	1-1/2"	2	43.86	51	0.3 ~ 8.6	650

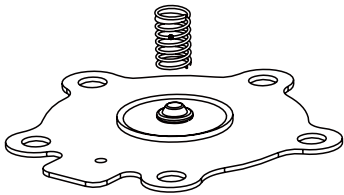
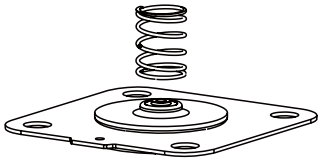
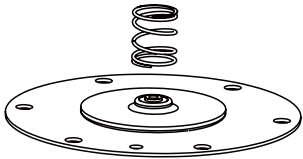
*Other option BRD-40MM□

GENERAL SPECIFICATION

Diaphragm material : NBR
 Operating temperature : -20 ~ 85°C
 Ambient temperature : -20 ~ 60°C

FEATURES

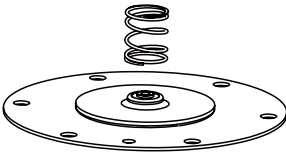
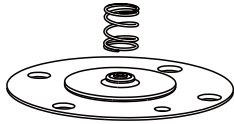
Consumable, spare parts, easy for regular replacement of diaphragm to ensure the fine function of equipment.

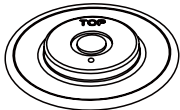
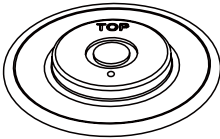
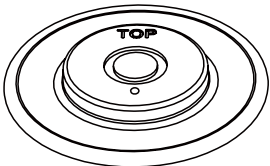
<p>BRDAM1P-07B00A7001 BRD-20 Diaphragm + spring</p>	<p>BRDAM1P-07B00A8001 BRD-25 Diaphragm + spring</p>	<p>BRDAM1P-07B00B1001 BRD-40 Diaphragm + spring</p>
		

BRD-42 =
 (BRDAM1P-07B00B1001 +
 BRDAM1P-07B0000001)

BRD-52 =
 (BRDAM1P-07B00B2001 +
 BRDAM1P-07B0000001)

BRD-62 =
 (BRDAM1P-07B00B2001 +
 BRDAM1P-07B0000001)

<p>BRDAM1P-07B00B2001 BRD-52 Large diaphragm + spring</p>	<p>BRDAM1P-07B0000001 BRD-10 Small diaphragm + spring</p>
	

<p>BRDAM1S-27RD20T301 BDV-20 Diaphragm one piece type</p>	<p>BRDAM1S-27RD250001 BDV-25 Diaphragm one piece type</p>	<p>BRDAM1S-27RD420001 BDV-40 Diaphragm one piece type</p>
		



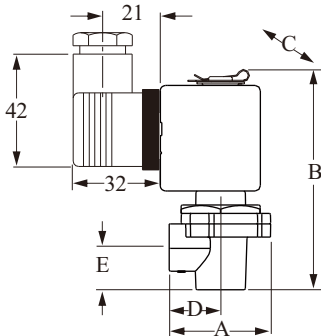
GENERAL FEATURES

Fluids : Air filtered and oil free air
 Diaphragm material : NBR
 Operation temp. : -20 ~ 85°C
 Ambient temp. : -20 ~ 60°C

ELECTRICAL FEATURES

Coil insulation : Class F (155°C)
 Connector spec. : Flying leads (DIN 43650A)
 Electrical equipment : EN 60204.1 and VDE 0580
 Electrical protection : IP65 (EN 60529)
 Standard voltages : 24Vdc ± 10%,
 110Vac ± 10%, 50/60Hz
 220Vac ± 10%, 50/60Hz
 Power consumption : 12W for 24Vdc
 AC---17VA/50Hz
 AC---14.5VA/60Hz
 Ambient temp. : -20 ~ 50°C

Model: BDB-V (□) □



Model	A (mm)	B (mm)	C (mm)	D (mm)	E (mm)
BDB-V □□	38.5	83.5	34	19.5	16

Model	Connection (inch)	Number (Diaphragm)	Operating pressure (Bar)
BDB-V □□	1/8" or 1/4"	1	2 ~ 8.6

CONSTRUCTION

Cover : Aluminum
 Body : Aluminum

ORDER INFORMATION

BRD A M 1 P-MHA ^⑪□ ^⑫□ ^⑬□ ^⑭□

⑪ ⑫ Voltages

A1: 110VAC,Lead wire A7: 220VAC,Lead wire B2: 24VDC,DIN connector
 A2: 24VDC,Lead wire B1: 110VAC,DIN connector B7: 220VAC,DIN connector

⑬ ⑭ Pneumatic connection

A1: 1/8"PT
 A2: 1/4"PT

*Please refer to page 39 For model and order code comparison table

REMOTE SOLENOID ENCLOSURE



ENCLOSURE

NEPSI PROOF No.GYJ13.1170 DIP.A20T.,T6



GENERAL FEATURES

Fluids : Air filtered and oil free air
 Diaphragm material : NBR
 Operation temp. : -20 ~ 85°C
 Ambient temp. : -20 ~ 60°C
 Pneumatic tube length 1~3 meters

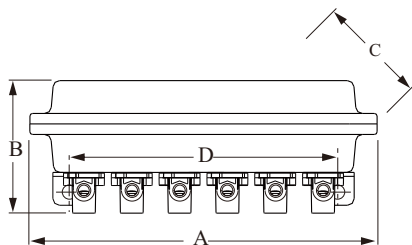
ELECTRICAL FEATURES

Coil insulation : Class F (155°C)
 Connector spec. : Flying leads
 Electrical equipment : EN 60204.1 and VDE 0580
 Electrical protection : IP65 (EN 60529)
 Ambient temp. : -20 ~ 50°C

SPECIFICATION

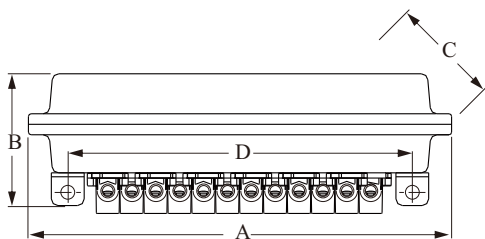
Model	Pneumatic connection	Electrical connection (NPT)	Number (Diaphragm)	Number solenoid valve	Operating pressure (Bar)
BDB-06V□	1/8" or 1/4"	3/4"x 1 hole	6	2,3,4,5,6	0.3 ~ 8.6
BDB-12V□	1/8" or 1/4"	3/4"x 2 hole	12	7,8,9,10,11,12	0.3 ~ 8.6
BDB-06W□	1/8" or 1/4"	3/4"x 1 hole	6	2,3,4,5,6	0.3 ~ 8.6
BDB-12W□	1/8" or 1/4"	3/4"x 2 hole	12	7,8,9,10,11,12	0.3 ~ 8.6

Model No.: BDB-06V□□ / BDB-06W□□



Model NO.	Solenoid valve	A(mm)	B(mm)	C(mm)	D(mm)
BDB-06V□□	6	270	106	160	234
BDB-12V□□	12	480	106	160	446
BDB-06W□□	6	270	106	160	234
BDB-12W□□	12	480	106	160	446

Model No.: BDB-12V□□ / BDB-12W□□



BULKHEAD CONNECTORS

FITTINGS

DESCRIPTION

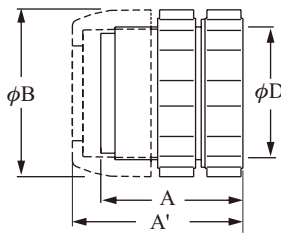
These components eliminate the requirement of welding and allow easy removal of cleaning systems and blowtubes for maintenance purposes.



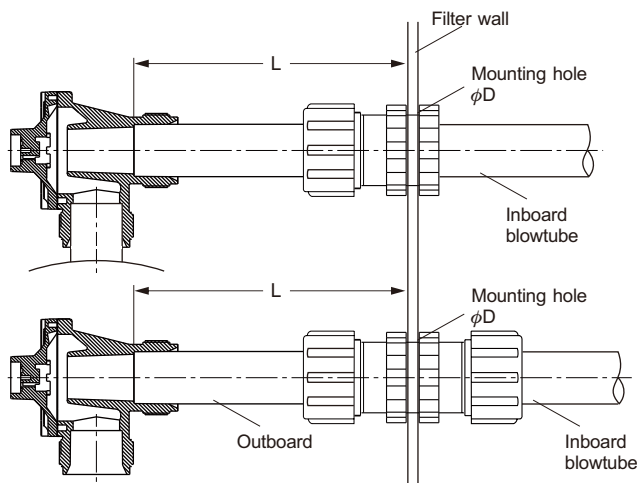
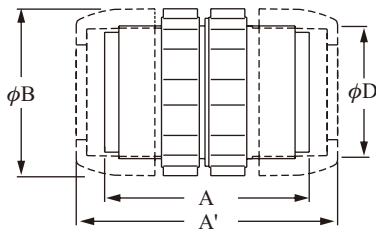
CONSTRUCTURE

- DIN nut : Aluminum
- Body : Aluminum
- Ring nut : Aluminum
- Washer : SS41
- Conical gasket : NBR (standard)
VITON (optional)

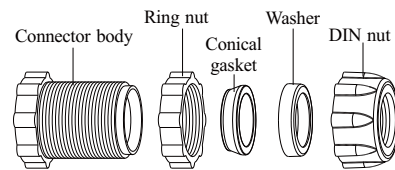
Model: BDB-□□D



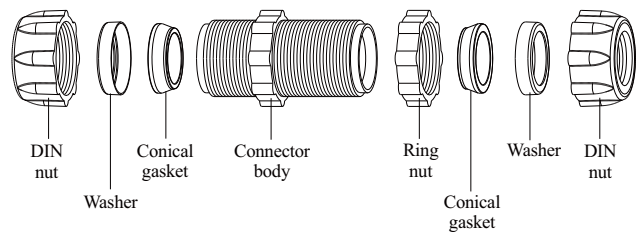
Model: BDB-□□DD



BDB-□□D



BDB-□□DD



Model No.	Orifice	A(mm)	A'(mm)	φB(mm)	φD(mm)
BDB-20D	3/4"	60.5	70	58.5	45~51
BDB-20DD	3/4"	91	110	58.5	45~51
BDB-25D	1"	69	80	70	56~62
BDB-25DD	1"	101	123	70	56~62
BDB-40D	1-1/2"	75	90	88	72~78
BDB-40DD	1-1/2"	108	138	88	72~78

ORDER INFORMATION

REMOTE SOLENOID ENCLOSURE

BRD A M 1 P-MH ^⑩ ^⑪ ^⑫ ^⑬ ^⑭ ^⑮

⑩ Explosion proof type _____

- F: Non Explosion proof type
- G: Explosion proof type

⑪ ⑫ Voltages _____

- A1: 110VAC, Lead wire
- A2: 24VDC, Lead wire
- A7: 220VAC, Lead wire
- B1: 110VAC, DIN connector
- B2: 24VDC, DIN connector
- B7: 220VAC, DIN connector

⑬ ⑭ Pneumatic connection _____

- A1: 1/8"PT
- A2: 1/4"PT

⑮ Solenoid value _____

- A: 6
- B: 12

*Please refer to page 39 For model and order code comparison table

BULKHEAD CONNECTORS

BRD A M 1 P-MH ^⑩ 0 0 ^⑬ ^⑭

⑩ Type _____

- F: Bulkhead connectons (single side)
- G: Bulkhead connectons (two side)

⑬ ⑭ Connection _____

- A7: 3/4"
- A8: 1"
- B1: 1-1/2"

*Please refer to page 39 For model and order code comparison table

PROGRAMMABLE SEQUENTIAL CONTROLLER

AE110A / 120A

The programmable sequential controller is designed specifically for use with pneumatic dust collector systems. It is used to control the solenoid of the diaphragm valve in order to program the pulse jet sequence of the valves. LED lights serve as indication of status for pulse position and timing.

Both the pulse jet timing and duration of each pulse jet could be adjusted by the logic circuitry. The controller has 2 independent "ON" and "OFF" methods, the 1st is when the AC power supply is turn off, the controller will shut down. When the AC supply is reconnected, the controller will automatically revert to its initial default settings. The 2nd method is to employ the use of the controller's remote contacts (R,C,A) as the controlling signal.

SPECIFICATIONS

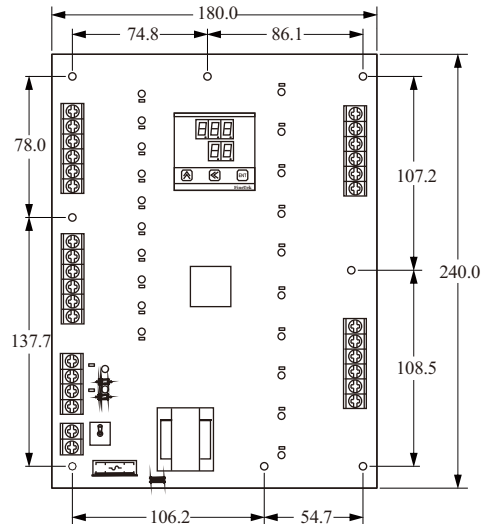
1. Power supply: 110V/220V, -10% , +20% , 50Hz/60Hz
2. Interval adjustable range: 1s~999s
3. Spray time adjustable range: 10ms~9.99s
4. Fuse: 3A
5. Number of sequence: 1~10 / 20 / 40 points
6. Ambient temperature : -10~60°C
7. Indication: 2 Sets of digital display
8. Input: 3 Push buttons
9. Cycle washing times after shut down: 0~99 times
12. Dimension: AE110A--- 160x160mm
AE120A--- 180x240mm

FEATURES

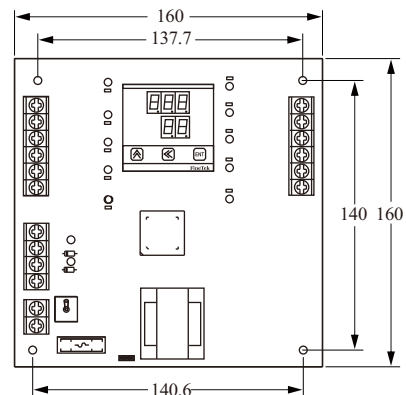
- Digital Display, provides ease of operation and display of operation status.
- Operating by Microprocessor: Accurate and precise operation.
- Remote Control: Convenient control through remote control.
- Able to automatically execute the pulse jet cycle even after the system shuts down so as to prevent residue sticking unto bag filter.
- Water-proof and dust-proof enclosure, to extend lifespan of the controller. (Optional)

*CASE(Optional Part)

*AE120A



*AE110A



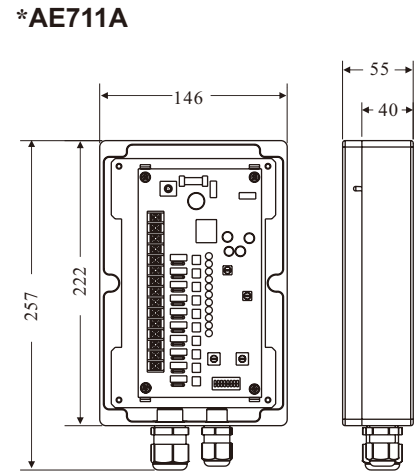
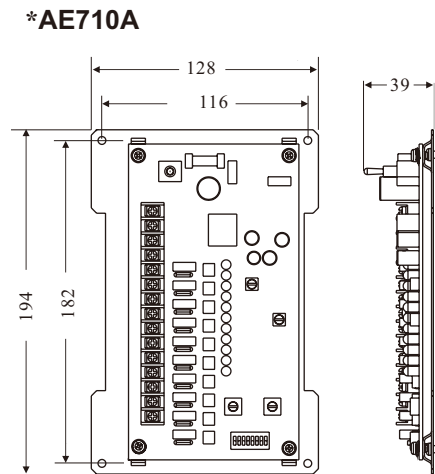
*Please refer to page 39 For model and order code comparison table

SEQUENTIAL CONTROLLER

AE71□A

SPECIFICATIONS

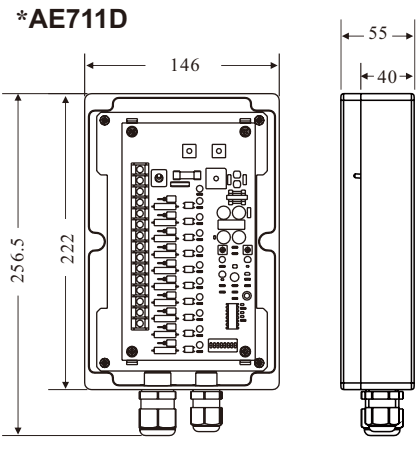
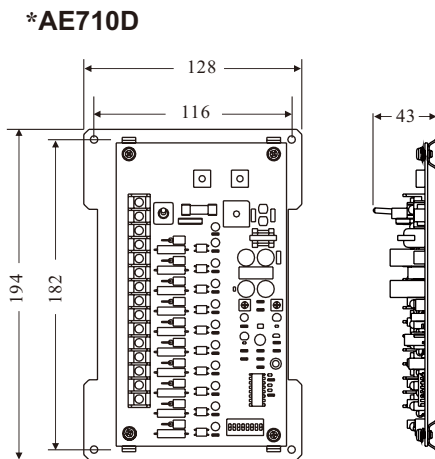
1. Power supply: 100~240Vac,50Hz/60Hz
2. Interval adjustable range: 2~60s
3. Spray time adjustable range: 20~200ms
4. Fuse: 3A
5. Ambient temperature : -25~75°C
6. Case material: Cover-----PC
BOX-----ABS



AE71□D

SPECIFICATIONS

1. Power supply: 24Vdc ± 10%
2. Interval adjustable range: 2~60s
3. Spray time adjustable range: 20~200ms
4. Fuse: 3A
5. Ambient temperature : -25~75°C
6. Case material: Cover-----PC
BOX-----ABS



*Please refer to page 39 For model and order code comparison table

MODEL NUMBER / ORDER CODE COMPARISON TABLE

Model Number	Order Code
BRD-20SC	BRD10000-ACA7A07MH0
BRD-25SC	BRD10000-ACA8A07MH0
BRD-40SC	BRD10000-ACB1A07MH0
BRD-42SC	BRD10000-ACB1B07MH0
BRD-52SC	BRD10000-ACB2B07MH0
BRD-62SC	BRD10000-ACB4B07MH0
BRD-72SC	BRD10000-ACB5B07MH0
BRD-20SC□	BRD10000-A□A7A07MH□
BRD-25SC□	BRD10000-A□A8A07MH□
BRD-40SC□	BRD10000-A□B1A07MH□
BRD-42SC□	BRD10000-A□B1B07MH□
BRD-52SC□	BRD10000-A□B2B07MH□
BRD-62SC□	BRD10000-A□B4B07MH□
BRD-72SC□	BRD10000-A□B5B07MH□
BRD-20NC	BRD10000-BCA7A07MH0
BRD-25NC	BRD10000-BCA8A07MH0
BRD-40NC	BRD10000-BCB1A07MH0
BRD-42NC	BRD10000-BCB1B07MH0
BRD-20NC□	BRD10000-B□A7A07MH□
BRD-25NC□	BRD10000-B□A8A07MH□
BRD-40NC□	BRD10000-B□B1A07MH□
BRD-42NC□	BRD10000-B□B1B07MH□
BRD-25UC	BRD10000-ACA8A07MB0
BRD-40UC	BRD10000-ACB1A07MB0
BRD-25UC□	BRD10000-A□A8A07MB□
BRD-40UC□	BRD10000-A□B1A07MB□
BRD-25MM	BRD10000-CCA8A07MH0
BRD-42MM	BRD10000-CCB1B07MH0
BRD-25MM□	BRD10000-C□A8A07MH□
BRD-42MM□	BRD10000-C□B1B07MH□

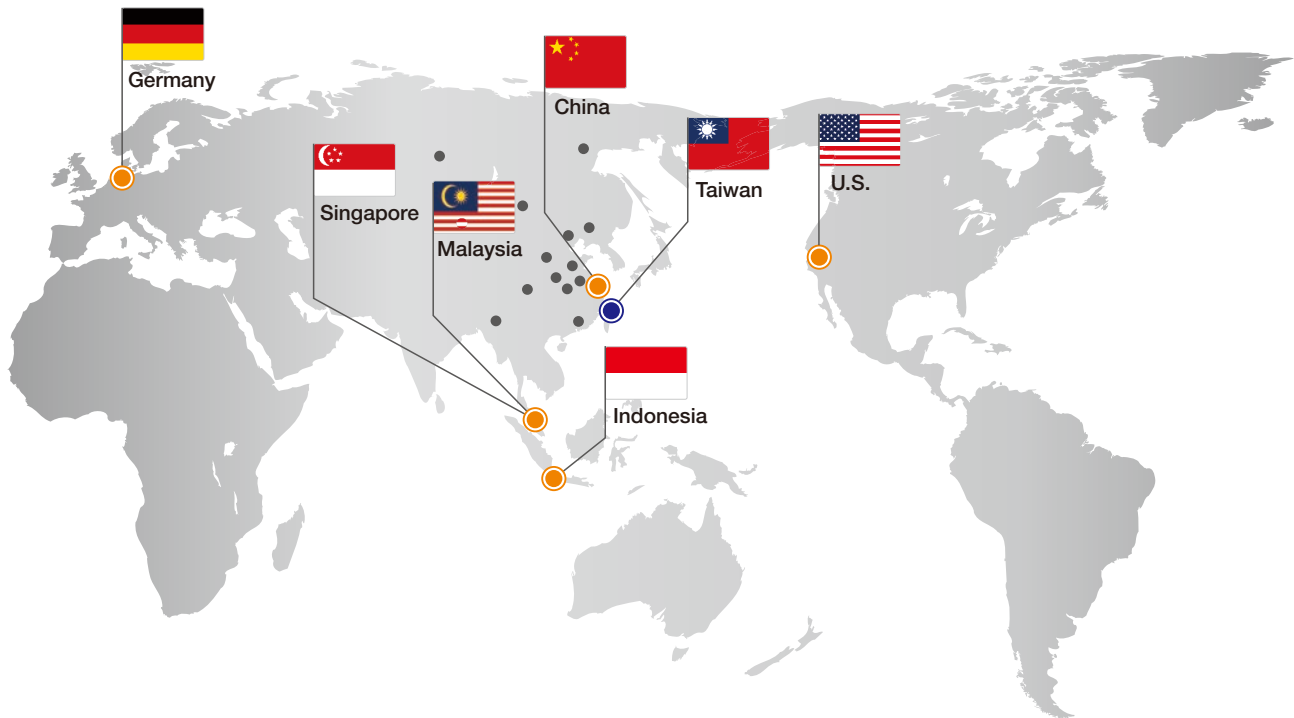
BDA-5030-Q	BRDAM1S-27RD20T301
BDA-5230-Q	BRDAM1S-27RD250001
BDA-5430-Q	BRDAM1S-27RD420001

Model Number	Order Code
BDV-20BS	BDV10000-ACA7A27MH0
BDV-25BS	BDV10000-ACA8A27MH0
BDV-40BS	BDV10000-ACB1A27MH0
BDV-20AS□C□	BDV10000-A□A7A27MH□
BDV-25AS□C□	BDV10000-A□A8A27MH□
BDV-40AS□C□	BDV10000-A□B1A27MH□
BDV-20BN	BDV10000-BCA7A27MH0
BDV-25BN	BDV10000-BCA8A27MH0
BDV-40BN	BDV10000-BCB1A27MH0
BDV-20AN□C□	BDV10000-B□A7A27MH□
BDV-25AN□C□	BDV10000-B□A8A27MH□
BDV-40AN□C□	BDV10000-B□B1A27MH□

BDB-0091	BRDAM1P-07B00A7001
BDB-0092	BRDAM1P-07B00A8001
BDB-0093	BRDAM1P-07B00B1001
BDB-0095	BRDAM1P-07B00B2001
BDB-0096	BRDAM1P-07B0000001
BDB-V□□	BRDAM1P-MHA□□□□
BDB-06V□□	BRDAM1P-MHF□□□□A
BDB-12V□□	BRDAM1P-MHF□□□□B
BDB-06W□□	BRDAM1P-MHG□□□□A
BDB-12W□□	BRDAM1P-MHG□□□□B
BDB-□□D	BRDAM1P-MHE00□□
BDB-□□DD	BRDAM1P-MHL00□□
BDB-20D	BRDAM1P-MHE00A7
BDB-20DD	BRDAM1P-MHL00A7
BDB-25D	BRDAM1P-MHE00A8
BDB-25DD	BRDAM1P-MHL00A8
BDB-40D	BRDAM1P-MHE00B1
BDB-40DD	BRDAM1P-MHL00B1

AE110A	AEX10100-AA
AE120A	AEX10200-AA
AE710A	AEX40100-AB
AE710D	AEX40100-AC

Global Network



■ Asia

● Taiwan

FineTek Co., Ltd. - Taipei Head Quarter
No.16, Tzuchiang St., Tucheng Industrial Park
New Taipei City 236, Taiwan
TEL: 886-2-2269-6789
FAX: 886-2-2268-6682
EMAIL: info@fine-tek.com

● China

Fine automation Co., Ltd. - Shanghai Factory
No.451 DuHui Rd, MinHang District, Shanghai,
China 201109
TEL: 86-21-6490-7260
EMAIL: info.sh@fine-tek.com

● Singapore

FineTek Pte Ltd. - Singapore Office
No. 60 Kaki Bukit Place, #07-06 Eunos
Techpark 2 Lobby B, Singapore 415979
TEL: 65-6452-6340
EMAIL: info.sg@fine-tek.com

● Indonesia

FineTek Co., Ltd. - Indonesia Office
Ruko Golden 8 Blok H No.38
Gading Serpong, Tangerang, Indonesia
TEL: 62 (021)-2923-1688
EMAIL: info.id@fine-tek.com

● Malaysia

FineTek Co., Ltd. - Malaysia Office
8-05, Plaza Azalea, Persiaran Bandaraya,
Seksyen 14, 40000 Shah Alam, Selangor, Malaysia
TEL: 603-5524-7168
EMAIL: info.my@fine-tek.com

■ North America

● California, U.S.

Aplus Finetek Sensor Inc. - US Office
355 S. Lemon Ave, Suite D, Walnut,
CA 91789
TEL: 1 909 598 2488
FAX: 1 909 598 3188
EMAIL: info@aplusfine.com

■ Europe

● Germany

FineTek GmbH - Germany Office
Bei den Kämpen 26
21220 Seevetal-Ramelsloh, Germany
TEL: +49-(0)4185-8083-12
FAX: +49-(0)4185-8083-80
EMAIL: info@fine-tek.de

● Mütec Instruments GmbH - Germany Office

Bei den Kämpen 26
21220 Seevetal-Ramelsloh, Germany
TEL: +49-(0)4185-8083-0
FAX: +49-(0)4185-8083-80
EMAIL: muetec@muetec.de



Distributor: