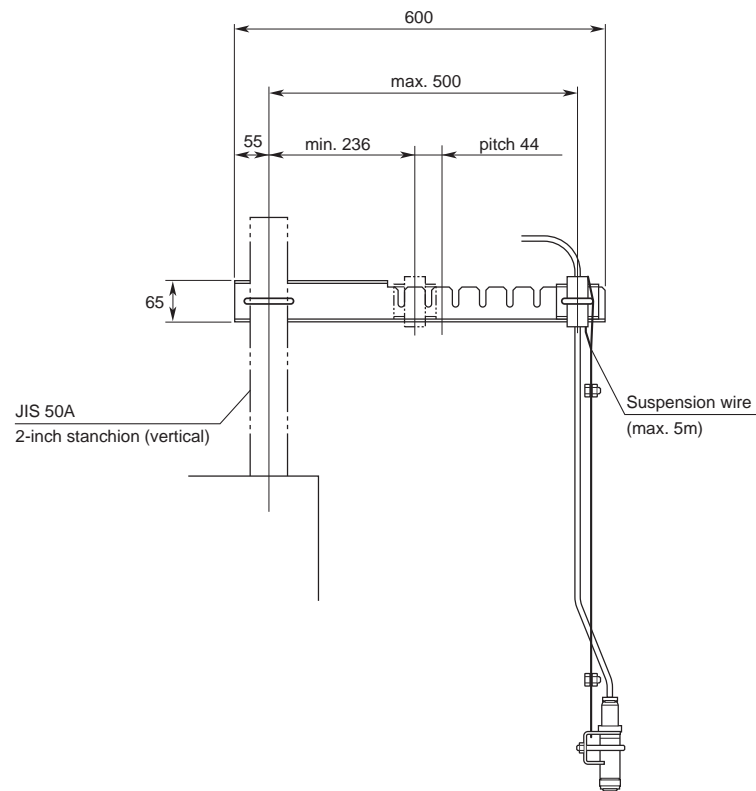


Weight : Approx. $0.5 + 0.12N$ kg
(N: Cable length (m))

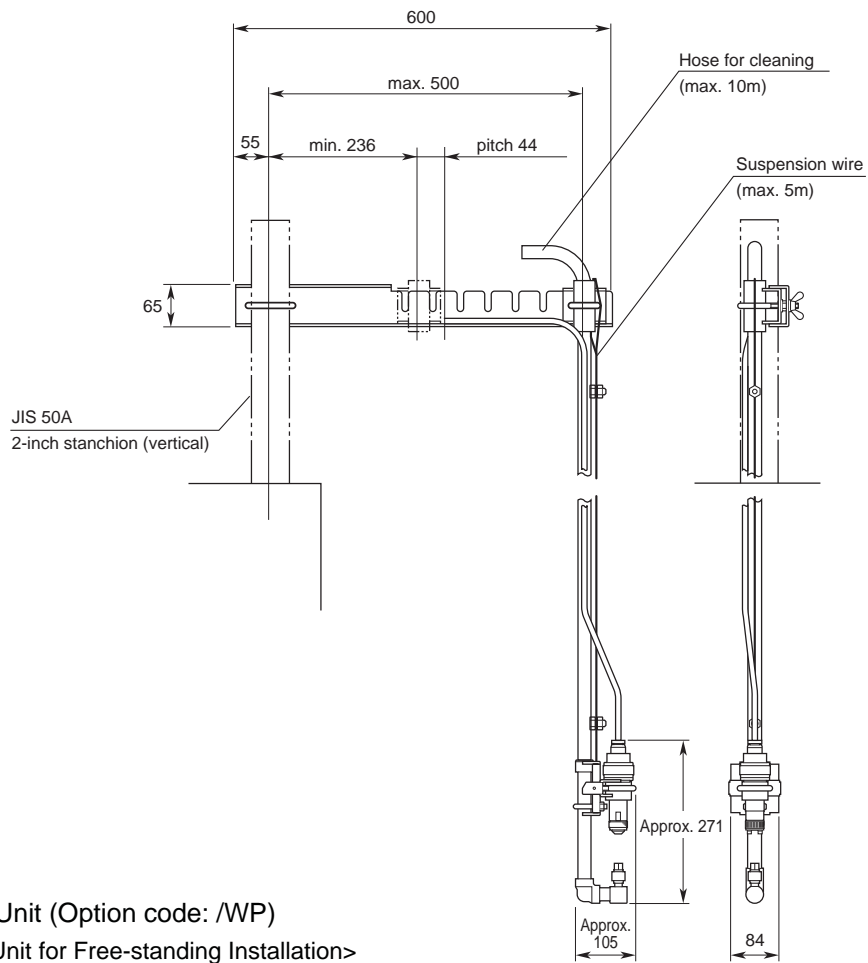
Hardware for Free-standing Installation (Option code: /MS)



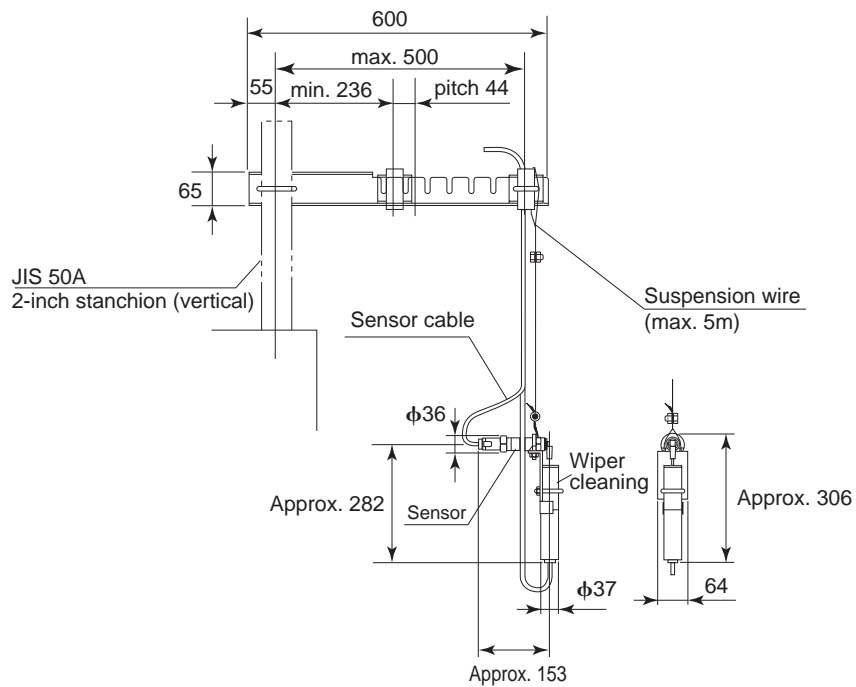
Unless otherwise specified, differences in the dimensions are specified as : General tolerance= \pm (Criteria of tolerance class IT18 in JIS B0401)/2.

□ Jet Cleaning Unit for Free-standing Installation (Option code: /JTJ or /JTA)

Unit : mm



□ Wiper Cleaning Unit (Option code: /WP)
<Wiper Cleaning Unit for Free-standing Installation>



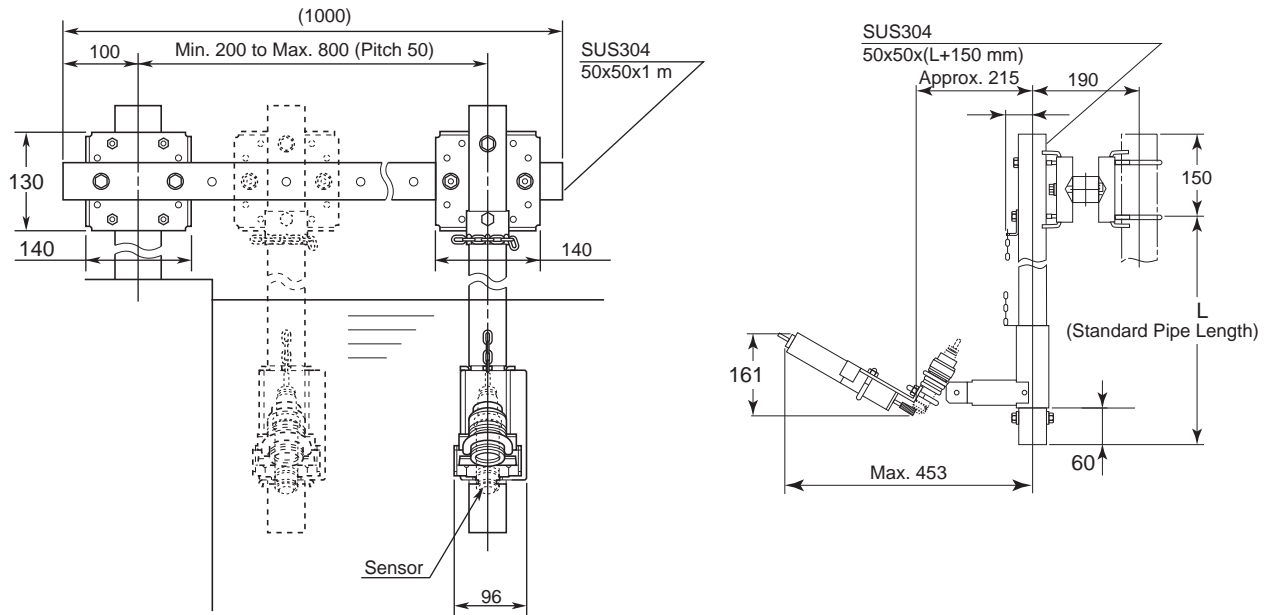
Unless otherwise specified, differences in the dimensions are specified as : General tolerance=±(Criteria of tolerance class IT18 in JIS B0401)/2.

SD 12E06C01-01E 2/3

1st Edition : May 2001
3rd Edition : Jan. 2011

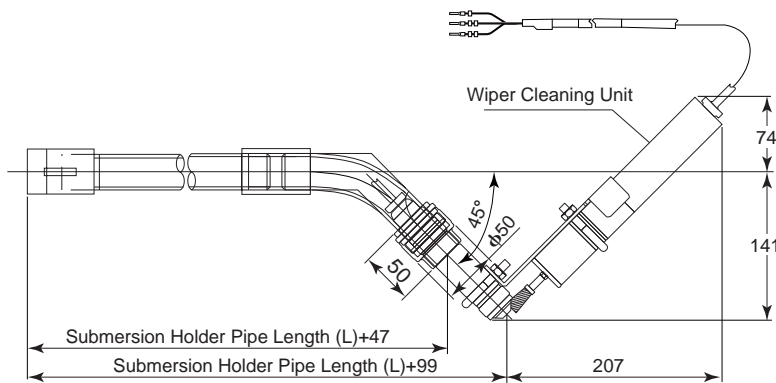
- Wiper Cleaning Unit (Option code: /WP)
- <Wiper Cleaning Unit for Suspension Type Holder>
- NOTE: Use Model HH350G (Suspension Type Holder).

Unit : mm

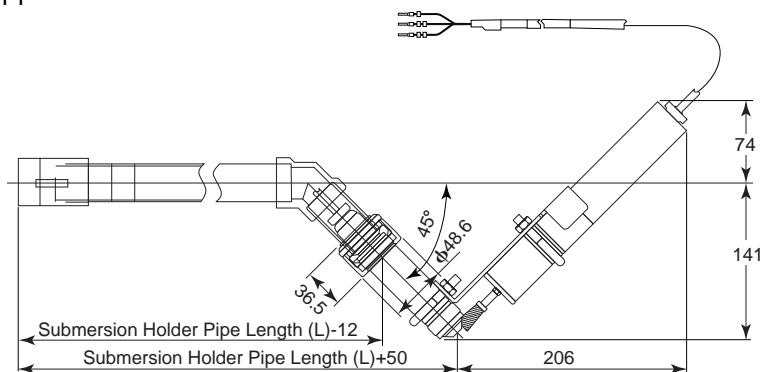


<Wiper Cleaning Unit with Submersion Type Holder>

- DOX8HS-S3



- DOX8HS-PP



Unless otherwise specified, differences in the dimensions are specified as : General tolerance= \pm (Criteria of tolerance class IT18 in JIS B0401)/2.