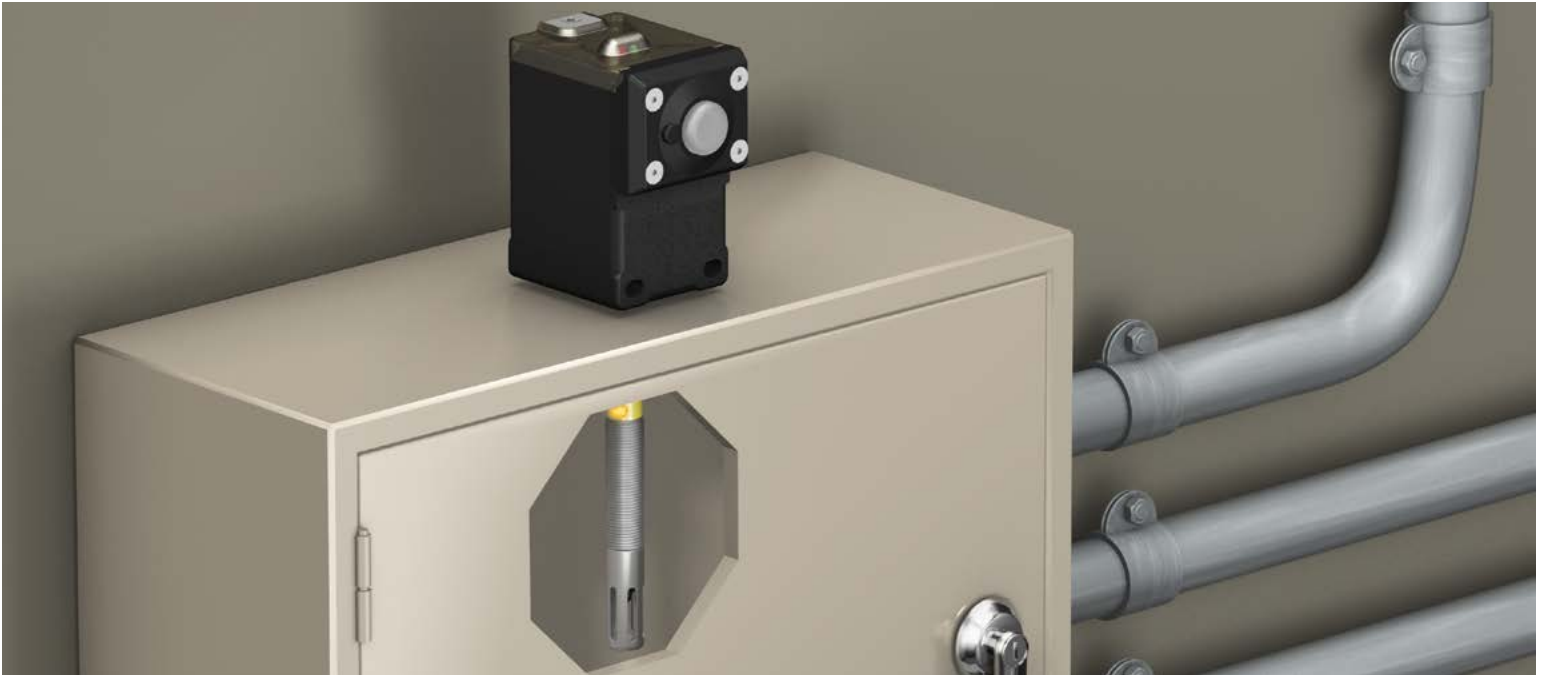




# Monitor Control Panel Temp & Humidity

What would happen if your control panel overheated or filled with water?



- Receive early warning before elevated temperatures or moisture causes damage
- Send threshold signal to a central location
- Activate environmental systems when temp or humidity exceed predefined thresholds



1-888-373-6767  
bannerengineering.com

**Sensors with Serial Interface**

Models	Description
M12FT4Q	Temperature sensor with 1-wire Serial interface
M12FTH4Q	Temperature and humidity sensor with 1-wire Serial interface



**Radios with Serial Interface**

Models	Description	Frequency
DX80N2Q45TH	Q45 Temp/humidity node	2.4 GHz
DX80N9X1S-P6	1-wire Serial Performance node	900 MHz
DX80N2X1S-P6		2.4 GHz
DX80DR9M-H6	1-wire Serial Modbus MultiHop Slave	900 MHz
DX80DR2M-H6		2.4 GHz



**Sensors with Modbus RTU, RS-485 interface**

Models	Description
M12FT3Q	Temperature sensor with Modbus RTU, RS-485 interface
M12FTH3Q	Temperature and humidity sensor with Modbus RTU, RS-485 interface



**Radios with Modbus RTU, RS-485 interface**

Models	Description	Frequency
DX80DR9M-H1	Inputs: Four discrete, two 0-20 mA analog, one thermistor, one counter Outputs: Two NMOS discrete	900 MHz
DX80DR9M-H1E		900 MHz
DX80DR2M-H1	Switch Power Outputs: Two Serial interface: RS-485	2.4 GHz
DX80DR2M-H1E		2.4 GHz
DX80DR9M-H2	Inputs: Four discrete, two 0-20 mA analog Outputs: Four sourcing discrete, two 0-20 mA analog Serial interface: RS-485	900 MHz
DX80DR2M-H2		2.4 GHz
DX80DR9M-HB1	Inputs: Two NPN discrete, two 0-20 mA analog Outputs: Two NMOS discrete	900 MHz
DX80DR2M-HB1		2.4 GHz
DX80DR9M-HB2	Inputs: Two PNP discrete, two 0-20 mA analog Outputs: Two PNP discrete, two 0-20 mA analog	900 MHz
DX80DR2M-HB2		2.4 GHz
DX80SR9M-H	Serial interface: RS-232, RS-485	900 MHz
DX80SR2M-H		2.4 GHz



**Wireless Tower Lights**

Models	Description	Frequency
TL70DXN9GYRQ	Wireless TL70 Tower Light with 3 segments (red, yellow, green)	900 MHz
TL70DXN2GYRQ		2.4 GHz



Talk with an app engineer. Get product specs. Order now.  
 1-888-373-6767 • bannerengineering.com  
 minneapolis, mn