

Drawings

Models RCCS30LR, RCCS30, ROTAMASS RCCS31, RCCS32, RCCS33 Coriolis Mass Flow and Density Meter, Remote Detector, w/wo option /Tx

Contents

Signal Cable Wiring	page 1
Outline dimensions flange type without option /Tx	page 2
Outline dimensions flange type with option /S2 and without option /Tx	page 2
Outline dimensions flange type with option /Tx	page 3
Flange dimensions	page 3
Heat tracing and ventilation connections	page 3
Table dimensions flange type	page 4
Clamp dimensions	page 5
Outline dimensions clamp type without option /Tx; also valid for outer thread type acc. DIN 11851	page 5
Outline dimensions clamp type with option /S2 and without option /Tx; also valid for outer thread type acc. DIN 11851	page 5
Outline dimensions inner thread type without option /Tx	page 6
Outline dimensions inner thread type with option /S2 and without option /Tx	page 6

Signal Cable Wiring:

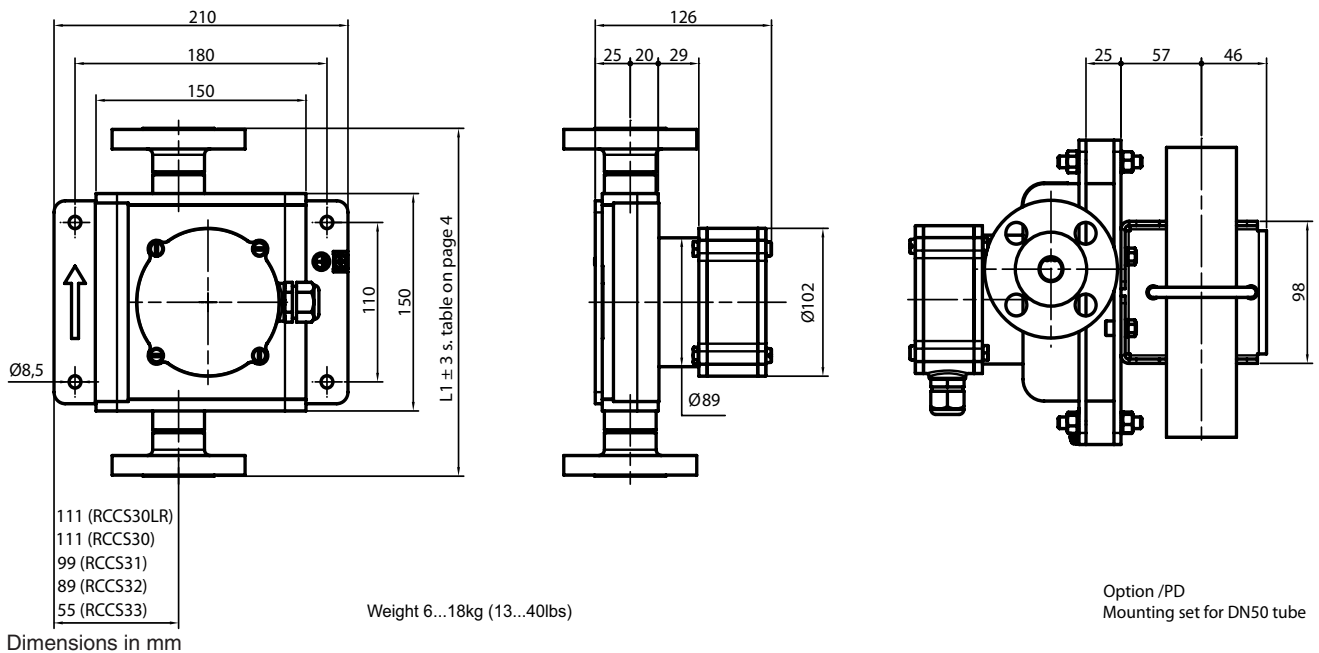
9-wire cable

Detector RCCS3[]	Cable	Converter RCCF31 / RCCR31
D +	1 ----- 1	D +
D -	2 ----- 2	D -
S1 +	3 ----- 3	S1 +
S1 -	4 ----- 4	S1 -
S2 +	5 ----- 5	S2 +
S2 -	6 ----- 6	S2 -
TP1	7 ----- 7	TP1
TP2	8 ----- 8	TP2
TP3	9 ----- 9	TP3
	----- shields	COM

Cable with Coaxial lines

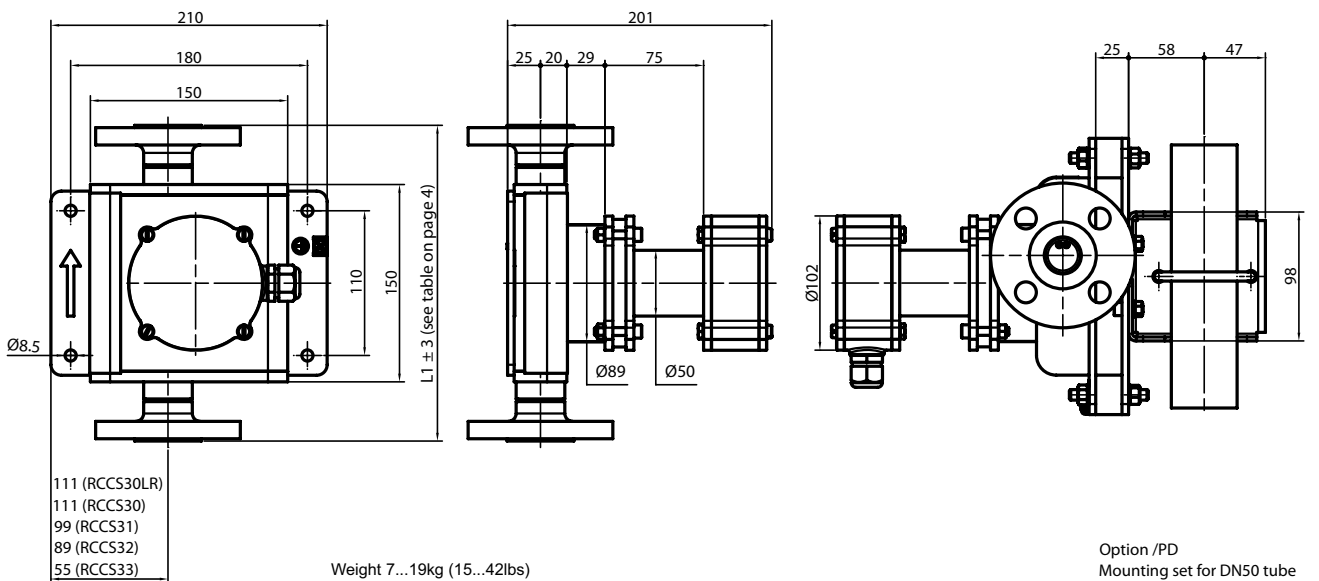
Detector RCCS3[]	Cable	Converter RCCF31 / RCCR31
D +	1 ----- 1	D +
D -	-----shield-----	D -
S1 +	2 ----- 2	S1 +
S1 -	-----shield-----	S1 -
S2 +	3 ----- 3	S2 +
S2 -	-----shield-----	S2 -
TP1	4 ----- 4	TP1
TP2	5 ----- 5	TP2
TP3	6 ----- 6	TP3
	----- shields	COM

Outline dimensions flange type without option /Tx:



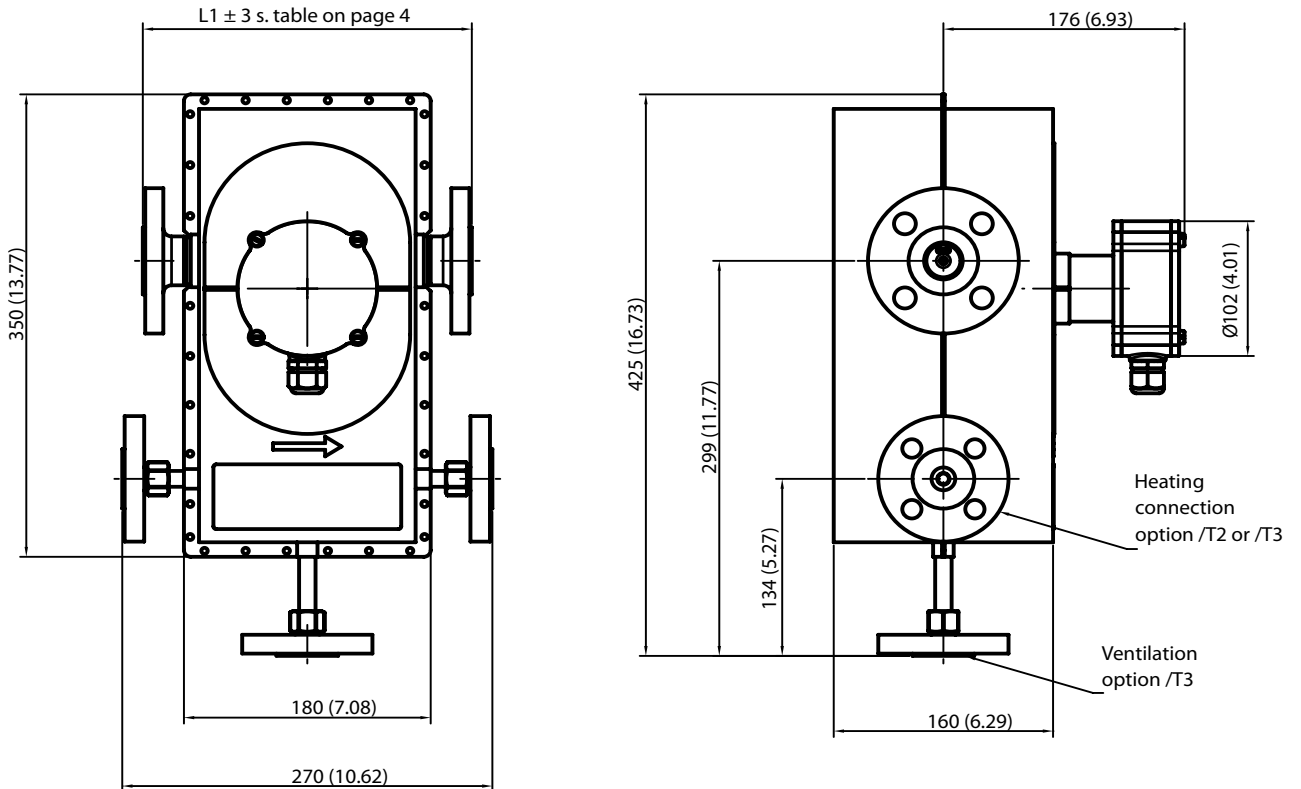
Dimensions in mm

Outline dimensions flange type with option /S2 and without option /Tx:



Dimensions in mm

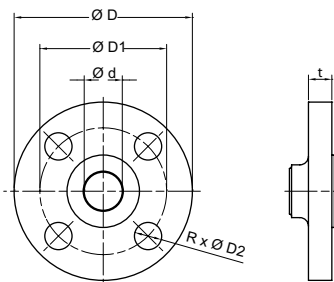
Outline dimensions flange type with option /Tx:



Dimensions in mm (inches)

Weight in kg without flange			Weight in kg with flange (01A1)		
/T1	/T2	/T3	/T1	/T2	/T3
8.7	11.5	12.5	9.5	12.3	13.3

Flange dimensions general:



Heat tracing and ventilation connections:

Process connection	Standard heating and ventilation connection *)
Ax	ASME ½" - 150
Dx	EN DN 15 PN 40
Jx	JIS 10K DN15
S2 ; S4	EN DN 15 PN 40
S8	ASME ½" - 150
G9	EN DN 15 PN 40
T9	ASME ½" - 150

*) others on request

pressure rate ASME ½" class 150				pressure rate EN DN15 PN40				pressure rate JIS DN15 10K			
D	D1	D2	R	D	D1	D2	R	D	D1	D2	R
88.9	60.5	15.9	4	95	65	14	4	95	70	15	4

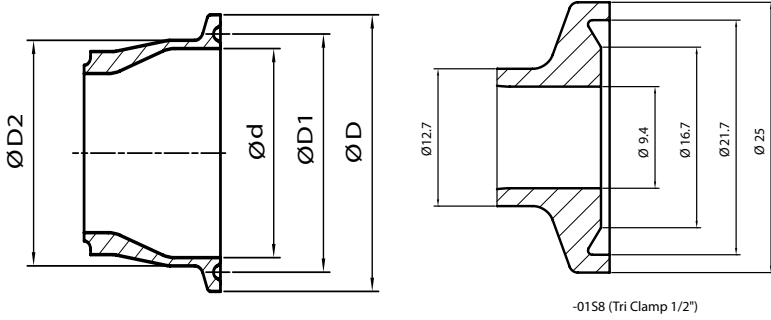
dimensions in [mm]

model code	pressure rate ASME class 150 (A1)						pressure rate ASME class 300 (A2)						pressure rate ASME class 600 (A3)						pressure rate ASME class 900 (A4)						pressure rate ASME class 900 / 1500 (A5)											
	D	D1	D2	R	t	d	D	D1	D2	R	t	d	D	D1	D2	R	t	d	D	D1	D2	R	t	d	D	D1	D2	R	t	d						
RCCS3[I][I]	90	60.3	15.9	4	11.9	240	95	66.7	15.9	4	15	240	95	66.7	15.9	4	21.6	250	---	---	---	---	---	---	---	---	---	---	---	---	120	82.6	22.4	4	29.7	270
RCCS30LR-33 -01	110	79.4	15.9	4	15	240	125	88.9	19.1	4	18.2	240	125	88.9	19.1	4	24.8	260	---	---	---	---	---	---	---	---	---	---	---	---	150	101.6	25.4	4	36	320
RCCS30-33 -02	125	98.4	15.9	4	18.2	250	155	114.3	22.4	4	21.4	250	155	114.3	22.4	4	29.6	270	---	---	---	---	---	---	---	---	---	---	---	---	180	123.8	28.6	4	39.2	340
RCCS30-33 -04						40.7						40.7					40.7						40.7						40.7							

model code	pressure rate EN PN16 (D2)						pressure rate EN PN40 (D4)						pressure rate EN PN63 (D5)						pressure rate EN PN100 (D6)					
	D	D1	D2	R	t	d	D	D1	D2	R	t	d	D	D1	D2	R	t	d	D	D1	D2	R	t	d
RCCS3[I][I]	---	---	---	---	---	---	95	65	14	4	16	240	---	---	---	---	---	---	105	75	14	4	20	250
RCCS30LR-33 -01	---	---	---	---	---	---	115	85	14	4	18	240	---	---	---	---	---	---	140	100	18	4	24	260
RCCS30-33 -02	---	---	---	---	---	---	150	110	18	4	18	240	---	---	---	---	---	---	170	125	22	4	26	320
RCCS30-33 -04	---	---	---	---	---	---						42.2						42.2						42.2

model code	pressure rate JIS class 10K (J1)						pressure rate JIS class 20K (J2)					
	D	D1	D2	R	t	d	D	D1	D2	R	t	d
RCCS3[I][I]	95	70	15	4	12.3	240	95	70	15	4	14.3	240
RCCS30LR-33 -01	125	90	19	4	14.3	240	125	90	19	4	16.3	240
RCCS30-33 -02	140	105	19	4	16.3	240	140	105	19	4	18.3	240
RCCS30-33 -04						40.7						40.7

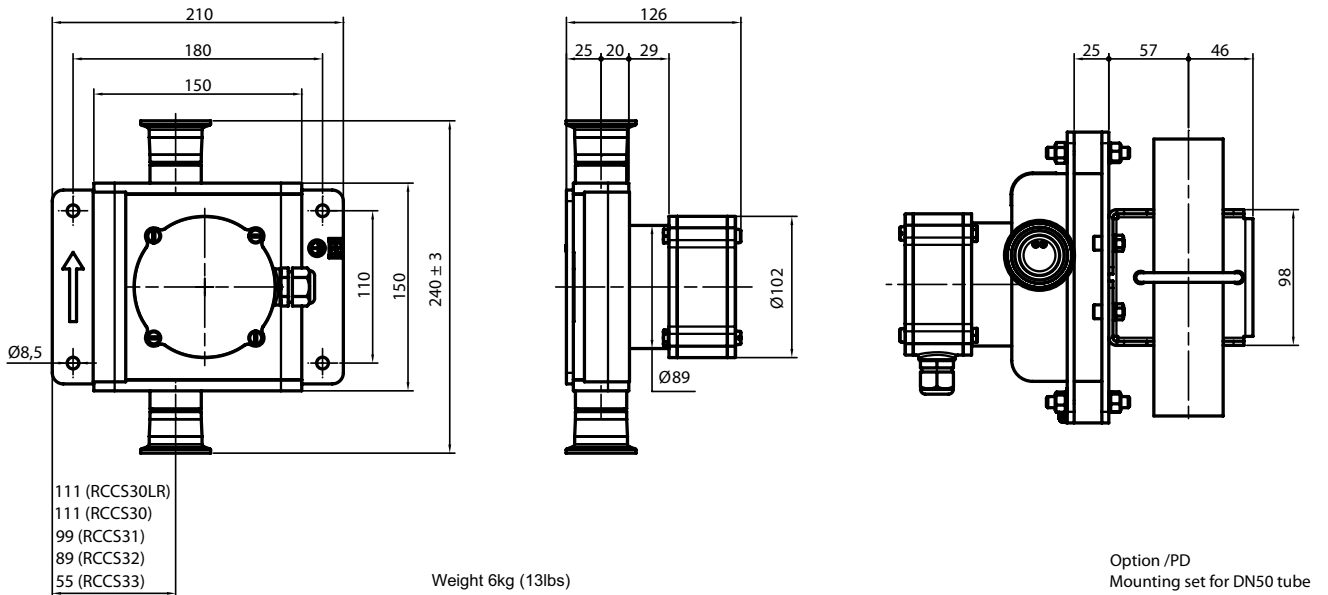
Clamp dimensions:



-0158 (Tri Clamp 1/2")

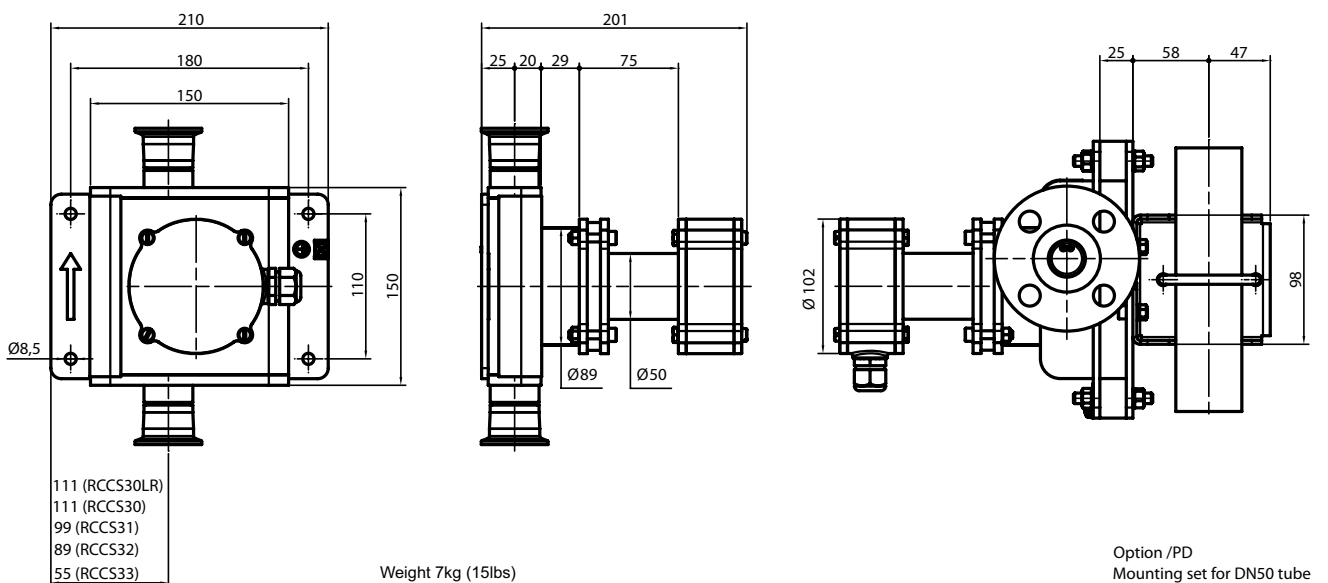
		DIN Clamp (S4)			
Model		D	D1	D2	d
RCCS30LR	-01S[]	33.9	27.4	19.1	16.1
RCCS30-33	-01S[]	33.9	27.4	19.1	16.1
	-02S[]	50.4	43.4	29.1	26.1
	-04S[]	50.4	43.4	41.1	38.1
		Tri-Clamp (S8)			
RCCS30LR	-01S[]	see drawing			
RCCS30-33	-01S[]	see drawing			
	-02S[]	50.4	43.4	25.4	22.1
	-04S[]	50.4	43.4	38.1	34.8

Outline dimensions clamp type without option /Tx:



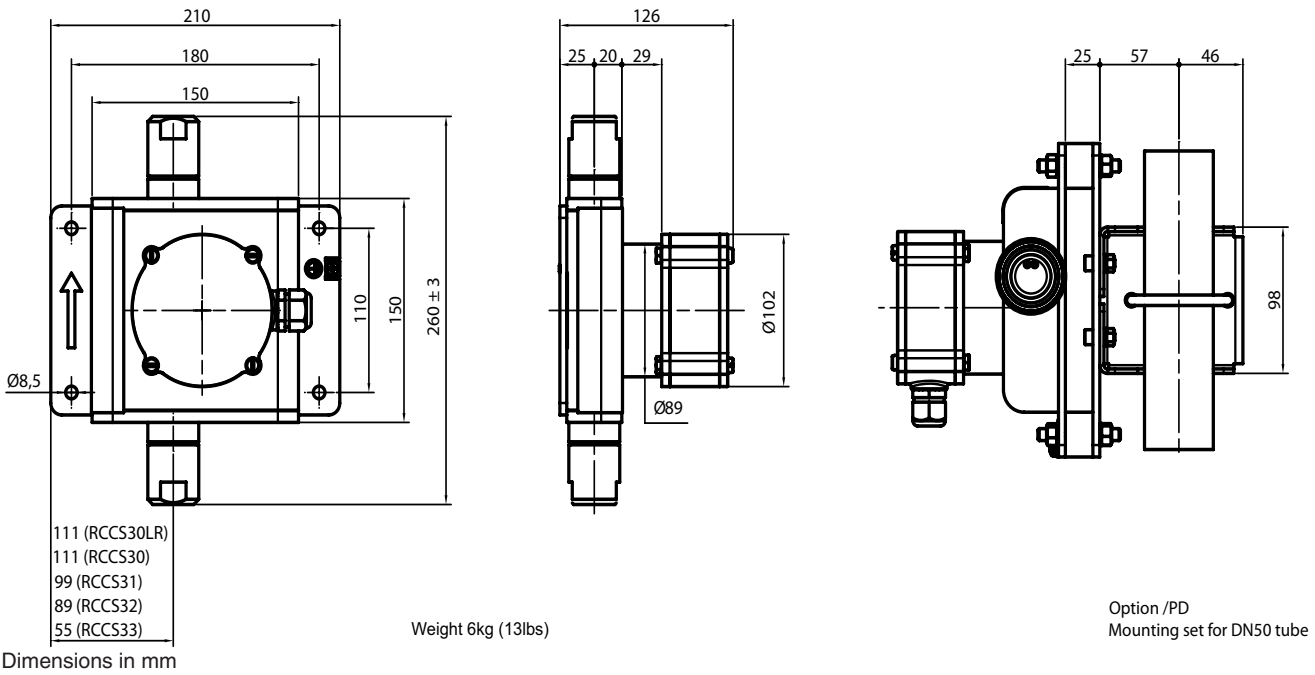
Dimensions in mm . Same dimensions for outer thread type acc. DIN 11851.

Outline dimensions clamp type with option /S2 without option /Tx:



Dimensions in mm

Outline dimensions inner thread type without option /Tx:



Outline dimensions inner thread type with option /S2 and without option /Tx:

